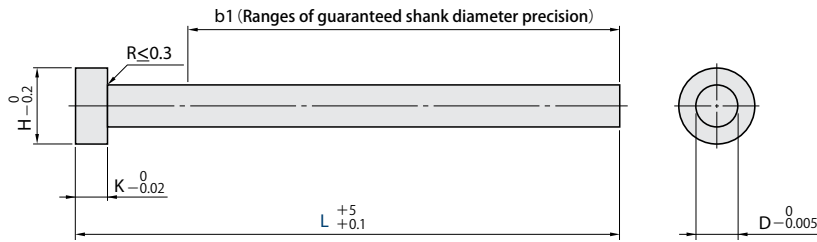


JIS Ejector Pins

Precision Straight Ejector Pins



Information Key

D = Body Diameter
H = Head Diameter
K = Head Thickness
L = Length
Standard: JIS
Material: SKH51
Hardness: 59-61HRC

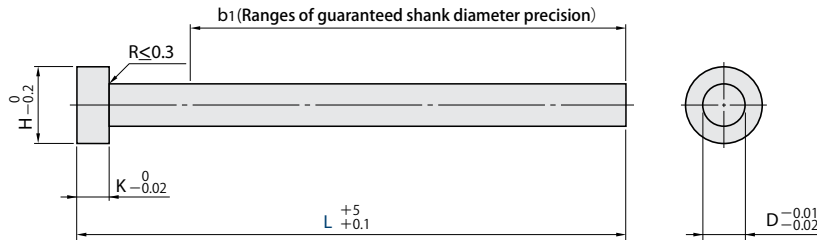


D PIN DIA.	H HEAD DIA.	K HEAD THK.	ITEM NUMBER (LENGTH L)				
			L = 100	L = 150	L = 200	L = 250	L = 300
0.6	3	3	EPH0.6-100-4	EPH0.6-150-4			
0.7			EPH0.7-100-4				
0.8			EPH0.8-100-4	EPH0.8-150-4			
0.9				EPH0.9-150-4			
1			EPH1-100-4	EPH1-150-4	EPH1-200-4		
1.1			EPH1.1-100-4				
1.2			EPH1.2-100-4	EPH1.2-150-4	EPH1.2-200-4		
1.3			EPH1.3-100-4	EPH1.3-150-4			
1.4			EPH1.4-100-4				
1.5			EPH1.5-100-4	EPH1.5-150-4	EPH1.5-200-4	EPH1.5-250-4	
1.6	4	4	EPH1.6-100-4	EPH1.6-150-4	EPH1.6-200-4		
1.7			EPH1.7-100-4	EPH1.7-150-4			
1.8			EPH1.8-100-4	EPH1.8-150-4	EPH1.8-200-4		
2			EPH2-100-4	EPH2-150-4	EPH2-200-4	EPH2-250-4	
2.1			EPH2.1-100-4	EPH2.1-150-4	EPH2.1-200-4		
2.2	5	4	EPH2.2-100-4	EPH2.2-150-4	EPH2.2-200-4		
2.3			EPH2.3-100-4				
2.5			EPH2.5-100-4	EPH2.5-150-4	EPH2.5-200-4	EPH2.5-250-4	
2.6				EPH2.6-150-4			
2.8	6	4		EPH2.8-150-4			
3			EPH3-100-4	EPH3-150-4	EPH3-200-4	EPH3-250-4	EPH3-300-4
3.1				EPH3.1-150-4			
3.5	7	4	EPH3.5-100-4	EPH3.5-150-4	EPH3.5-200-4	EPH3.5-250-4	EPH3.5-300-4
4			EPH4-100-4	EPH4-150-4	EPH4-200-4	EPH4-250-4	EPH4-300-4
4.5	9	6	EPH4-100-6	EPH4-150-6	EPH4-200-6	EPH4-250-6	
		4	EPH4.5-100-4	EPH4.5-150-4	EPH4.5-200-4	EPH4.5-250-4	
6			EPH4.5-150-6	EPH4.5-200-6			
5		4	EPH5-100-4	EPH5-150-4	EPH5-200-4	EPH5-250-4	EPH5-300-4
5.5	10	6	EPH5-100-6	EPH5-150-6	EPH5-200-6	EPH5-250-6	
		4		EPH5.5-150-4	EPH5.5-200-4		
6	11	4	EPH6-100-4	EPH6-150-4	EPH6-200-4	EPH6-250-4	EPH6-300-4
6.5		6	EPH6-100-6	EPH6-150-6	EPH6-200-6	EPH6-250-6	EPH6-300-6
		4		EPH6.5-150-4	EPH6.5-200-4		
7	13	8		EPH7-150-4	EPH7-200-4		
8		4	EPH7-100-8	EPH7-150-8			
	8	4	EPH8-100-4	EPH8-150-4	EPH8-200-4	EPH8-250-4	EPH8-300-4
9		8	EPH8-100-8	EPH8-150-8	EPH8-200-8	EPH8-250-8	EPH8-300-8
		8	EPH9-100-8				
10	15	4	EPH10-100-4	EPH10-150-4	EPH10-200-4		
		8	EPH10-100-8	EPH10-150-8	EPH10-250-8		
12	17	4		EPH12-150-4			

Range of guaranteed shank diameter precision: $b1=L \times 2/3$

JIS Ejector Sleeves

Precision Straight Ejector Pin Sleeves



Information Key

D = Body Diameter
 H = Head Diameter
 K = Head Thickness
 L = Length
 Standard: JIS
 Material: SKH51
 Hardness: 59-61HRC



D PIN DIA.	H HEAD DIA.	K HEAD THK.	ITEM NUMBER (LENGTH L)					
			L= 100	L= 150	L= 200	L= 250	L= 300	
0.8	3	4	EPS0.8-100-4	EPS0.8-150-4				
0.9			EPS0.9-150-4					
1			EPS1-100-4	EPS1-150-4				
1.2			EPS1.2-100-4	EPS1.2-150-4	EPS1.2-200-4			
1.3			EPS1.3-100-4					
1.5			EPS1.5-100-4	EPS1.5-150-4	EPS1.5-200-4			
1.6	EPS1.6-100-4		EPS1.6-150-4					
1.7	4		EPS1.7-100-4	EPS1.7-150-4				
1.8			EPS1.8-100-4	EPS1.8-150-4	EPS1.8-200-4			
2	5		EPS2-100-4	EPS2-150-4	EPS2-200-4	EPS2-250-4		
2.5			EPS2.5-100-4	EPS2.5-150-4	EPS2.5-200-4	EPS2.5-250-4	EPS2.5-300-4	
3			EPS3-100-4	EPS3-150-4	EPS3-200-4	EPS3-250-4	EPS3-300-4	
3.5		7	EPS3.5-100-4	EPS3.5-150-4	EPS3.5-200-4	EPS3.5-250-4	EPS3.5-300-4	
4			EPS4-100-4	EPS4-150-4	EPS4-200-4	EPS4-250-4	EPS4-300-4	
4.5		9	6		EPS4-150-6	EPS4-200-6		
	4		EPS4.5-100-4	EPS4.5-150-4	EPS4.5-200-4	EPS4.5-250-4		
6				EPS4.5-200-6				
5	4		EPS5-100-4	EPS5-150-4	EPS5-200-4	EPS5-250-4	EPS5-300-4	
5.5	10	6	EPS5-100-6	EPS5-150-6	EPS5-200-6	EPS5-250-6		
		4	EPS5.5-100-4	EPS5.5-150-4	EPS5.5-200-4			
6		EPS6-100-4	EPS6-150-4	EPS6-200-4	EPS6-250-4	EPS6-300-4		
6		EPS6-100-6	EPS6-150-6	EPS6-200-6	EPS6-250-6			
6.5		11	4			EPS6.5-200-4		
7			8		EPS7-150-4	EPS7-200-4		
8	13	8		EPS7-150-8				
		4	EPS8-100-4	EPS8-150-4	EPS8-200-4	EPS8-250-4		
10	15	8		EPS8-150-8	EPS8-200-8	EPS8-250-8		
		4			EPS10-200-4			
		8		EPS10-150-8	EPS10-200-8			

Range of guaranteed shank diameter precision: $b1=L \times 2/3$