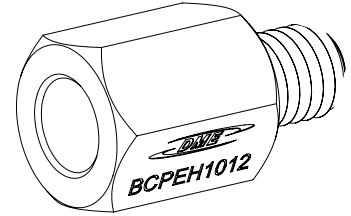


# Hex Knockout Extensions

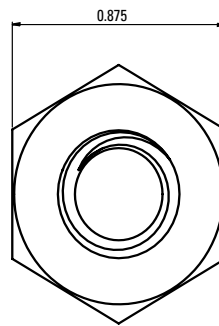
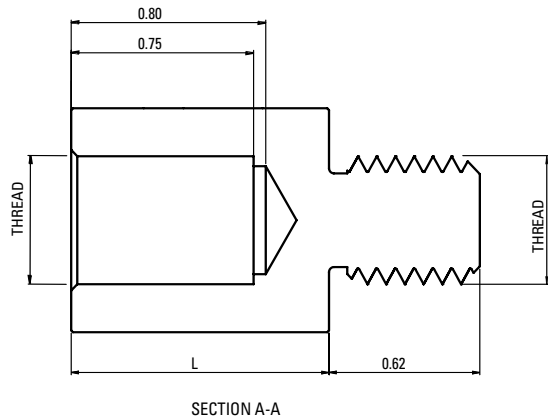


DME's Hex Knockout Extensions allow increased ejection stroke by adding 1.052" and 1.552" in length to the knockout rods. Extensions are available in 4 thread types to accommodate multiple press manufactures and applications.

- Increases ejection stroke for knockout rod
- Protective Black Oxide coating



ITEM NUMBER	L LENGTH	THREAD
BCPEH1038	1.052	3/8" - 16 UNC
BCPEH1012		1/2" - 13 UNC
BCPEH1058		5/8" - 11 UNC
BCPEH1034		3/4" - 10 UNC
BCPEH1538	1.552	3/8" - 16 UNC
BCPEH1512		1/2" - 13 UNC
BCPEH1558		5/8" - 11 UNC
BCPEH1534		3/4" - 10 UNC



**Material:**  
 Steel - 4140 or P20  
 Hardness - 28-32 HRC  
 Surface Treatment - Black Oxide

