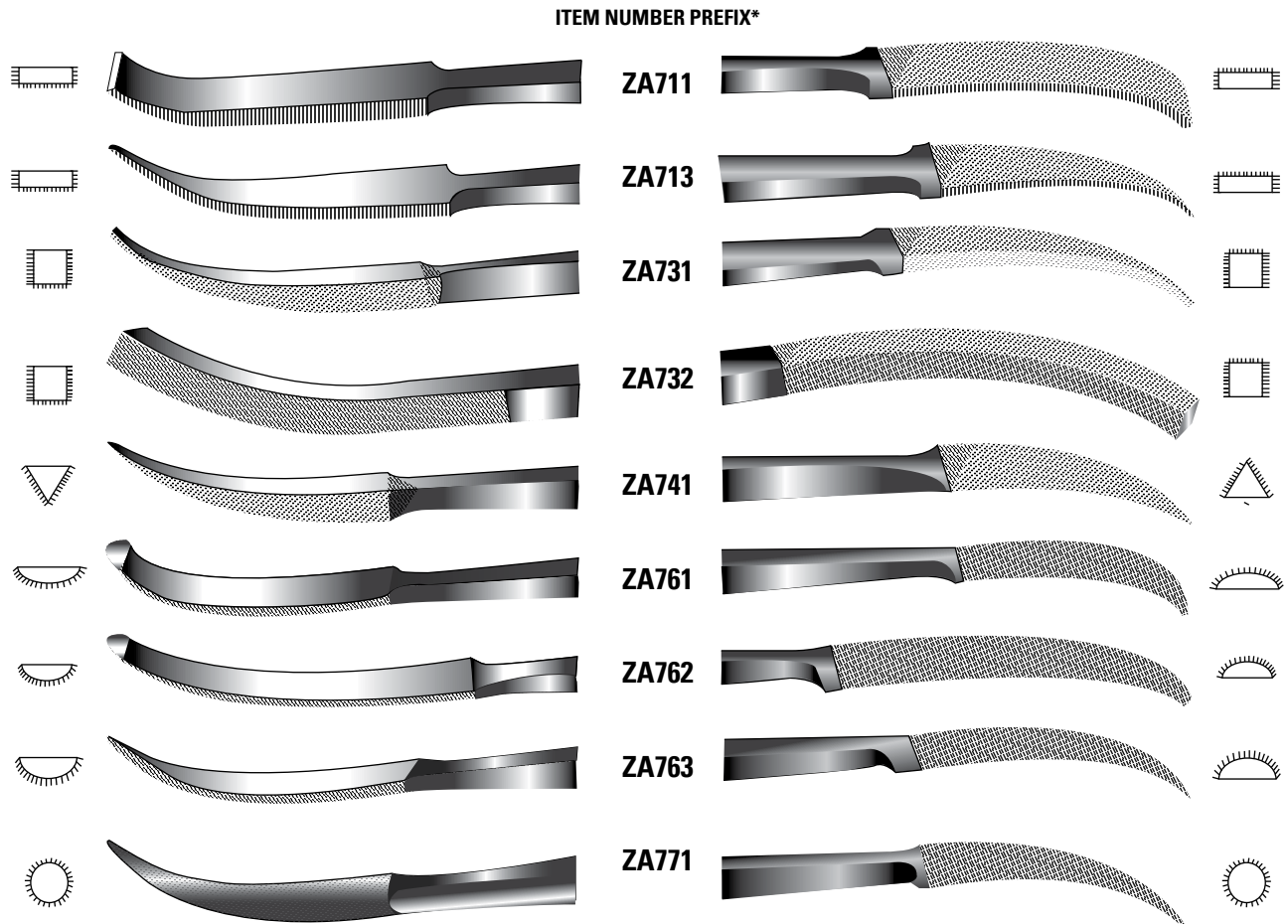


Silversmiths' Rifflers | Quick-Change Riffler Handles

Silversmiths' Rifflers

These Swiss Quality Precision Silversmiths' Rifflers are made of chrome alloy steel for longer cutting life. They are unsurpassed as to precision of shape, accuracy of size, hardness and durability.



AVAILABLE IN "0" AND "2" CUT ALL RIFFLERS ARE 7" LONG

"0" cut – 64 teeth/inch

"2" cut – 97 teeth/inch

WHEN ORDERING, PLEASE SPECIFY:

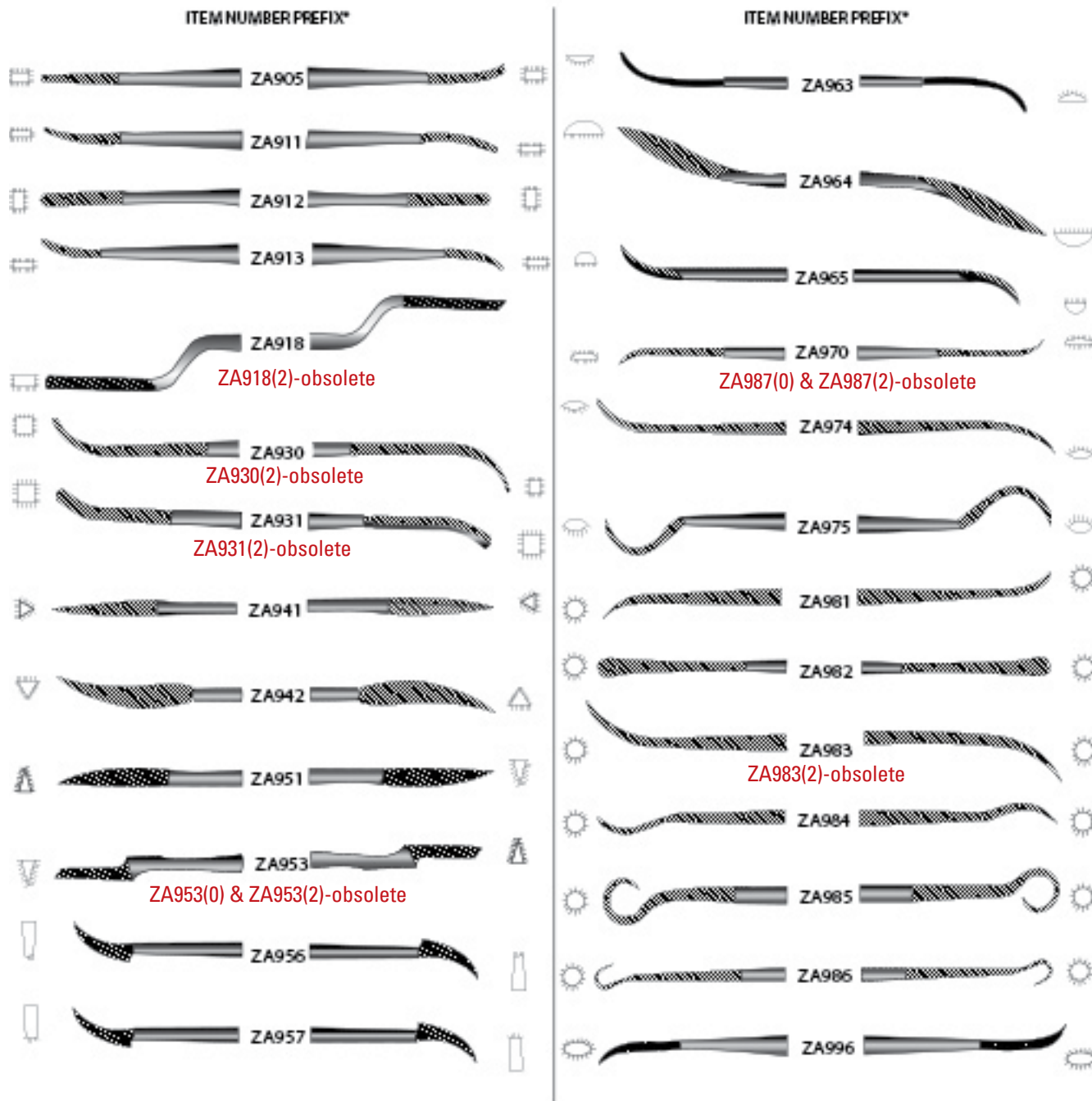
1. Item Number
2. Quantity
3. Method of shipment

*When ordering, add "0" or "2" to end of item number to indicate cut desired (e.g. ZA7110)

Die Sinkers' Rifflers

Die Sinker Rifflers

Exceptional Quality Swiss Die Sinkers' Rifflers are made of chrome alloy steel in the tradition of superior craftsmanship for longer cutting life. They are unsurpassed as to precision of shape, accuracy of size, hardness and durability.



AVAILABLE IN "0" AND "2" CUT ALL RIFFLERS ARE 6" LONG
 "0" cut – 64 teeth/inch
 "2" cut – 97 teeth/inch

*When ordering, add "0" or "2" to end of item number prefix to indicate cut desired (e.g. ZA9050)

WHEN ORDERING, PLEASE SPECIFY:

1. Item Number
2. Quantity
3. Method of shipment

Habilis Files | Diamond Needle Files

Habilis Files

CHROME ALLOY STEEL, INTEGRAL HANDLE

DME Habilis Files are made from chrome alloy steel. They are just right for those in-between jobs when a full-size file is too large. The file and integral handle are balanced to give the mold or die maker full control for efficient cutting.

A complete set, stored in a sturdy vinyl pouch, includes one each of these five popular file shapes: rectangular, half-round, triangular, square and round. These handy Habilis Files are available in coarse (00) and medium (1) cut. Files of the same shape and same cut may be purchased in boxes of ten.

Set of 5 Files	
CUT	ITEM NUMBER
00	HFS00
1	HFS1

FILE SHAPE	00 CUT	1 CUT	FILE CONTOUR DIMENSIONS	CUT LENGTH
	ITEM NUMBER	ITEM NUMBER		
Rectangular	HFP00	HFP1	$\frac{3}{8} \times \frac{1}{8}$	4"
Half-Round	HFF00			
Triangular	HFT00	HFT1	$\frac{3}{8}$	4"
Square	HFL00			
Round	HFR00	HFR1	$\frac{1}{4}$	4"



Set of five files in a vinyl pouch.
Overall length of files is 8½".

Diamond Needle Files

FOR FILING HARDENED STEELS, CARBIDES AND CERAMICS

DME Diamond Needle Files are specially made for moldmakers. They feature efficient cutting action with only the slightest pressure and provide long tool life. The Diamond Needle Files are 5½" long with approximately 2¾" diamond surface. The round shanks are knurled to prevent slippage.

A complete set, stored in a sturdy vinyl pouch, includes one each of these five popular file shapes: rectangular, half-round, triangular, square and round. Diamond Needle Files may also be purchased individually.

FILE SHAPE	ITEM NUMBER
Rectangular	DNFP
Triangular	DNFT
Round	DNFR

Set of 5 Files
ITEM NUMBER
DNFS5



Set of five files in a vinyl pouch.
Overall length of files is 5½".

GRIT = 75 microns
(180 MESH)

Abrasive Stones

For General and Special Purpose Stoning, Finishing and Polishing of Molds and Dies

GENERAL PURPOSE STONES

These silicon carbide, vitrified bond stones are available in two types:

TYPE A: For use on steel prior to heat treating or for steel hardness lower than 40 HRC.

TYPE B: For steel hardness higher than 40 HRC. Ideal for restoring finish after heat treating.

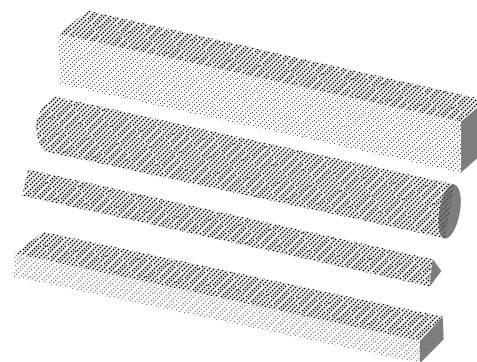
SPECIAL PURPOSE STONES

Available in three types:

TYPE E (EDM STONES): Aluminum oxide crystals in a medium hard vitrified bond, with a special resin treatment to improve cutting action on hard surface crusts, such as those produced by EDM.

TYPE M (MEDIUM OIL FILLED): Aluminum oxide crystals in a hard vitrified bond, with a special oil fill which eliminates the soaking often recommended for abrasive stones. The oil fill provides additional lubrication to prevent loading and assure optimum stock removal. Ideal for heat treated tool steels.

TYPE F (DME FLEX): Aluminum oxide crystals in a hard resin bond provide some flexibility to reduce breakage. Ideal for polishing deep ribs and fine details.



GENERAL PURPOSE (TYPE A OR B)

RECTANGULAR			GRIT		
THK.	WIDTH	LGTH.	150 & 240	400	600
1/16	1/2	4"	•	•	•
1/8	1/2	4"	•	•	•
3/16	1/2	4"	•	•	•
1/4	3/4	4"	•	•	•
1/2	3/4	4"	•	•	•
1/2	1"	4"	•	•	•

GENERAL PURPOSE (TYPE A OR B)

SQUARE		GRIT		
SIZE & SHAPE	LGTH.	150 & 240	400	600
1/4 SQ	4"	•	•	•
3/8 SQ	4"	•	•	•
1/2 SQ	6"	•	•	•
3/4 SQ	6"	•	•	•

GENERAL PURPOSE (TYPE A OR B)

TRIANGULAR		GRIT		
SIZE & SHAPE	LGTH.	150 & 240	400	600
1/4 TRI	4"	•	•	•
1/2 TRI	4"	•	•	•

GENERAL PURPOSE (TYPE A OR B)

ROUND		GRIT		
SIZE & SHAPE	LGTH.	150 & 240	400	600
1/4 RD	4"	•	•	•
3/8 RD	4"	•	•	•
1/2 RD	4"	•	•	•

WHEN ORDERING, PLEASE SPECIFY:

- Quantity
- Size, Shape, Grit and Type
Rectangular Example: 116124150A
Square Example: 14SQ4400A

SPECIAL PURPOSE (TYPES E, M OR F)

For other stones (sized for use with profilers), see Page 41.

SHAPE AND SIZE			TYPE E (EDM STONES) GRIT					TYPE M (MEDIUM OIL FILLED) GRIT					TYPE F (DME FLEX) GRIT				
RECTANGULAR																	
THICK.	WIDTH	LENGTH	150	240	320	400	600	150	240	320	400	600	150	240	320	400	600
1/16	1/4	4"	•	•	•	•	•	•	•	•	•	•	•	•	•	•	•
1/8	1/4	4"	•	•	•	•	•	•	•	•	•	•	•	•	•	•	•
1/8	1/2	4"	•	•	•	•	•	•	•	•	•	•	•	•	•	•	•
1/4	1/2	4"	•	•	•	•	•	•	•	•	•	•	•	•	•	•	•
SQUARE			GRIT					GRIT					GRIT				
SIZE AND SHAPE	LENGTH		150	240	320	400	600	150	240	320	400	600	150	240	320	400	600
1/8 SQ	4"		•	•	•	•	•	•	•	•	•	•	•	•	•	•	•
1/4 SQ	4"		•	•	•	•	•	•	•	•	•	•	•	•	•	•	•

Abrasive Stone Kit

Abrasive Stone Kit

This useful kit designed for the professional metal finisher contains a complete selection of 45 aluminum oxide special-purpose stones, plus one handheld stone holder. The special-purpose stones consist of:

- “Type E” (resin treated) for work on hard surface crusts such as EDM
- “Type M” (oil filled) for stoning heat-treated tool steels
- “Type F” (resin bonded) for added flexibility and break resistance when stoning deep ribs and fine details



ABRASIVE STONE KIT ITEM NUMBER: ASK450

ABRASIVE STONE KIT ITEM NUMBER ASK450 INCLUDES:

SHAPE AND SIZE			TYPE E [EDM STONES]	TYPE M (MEDIUM OIL FILLED)	TYPE F (DME FLEX)
RECTANGULAR			1 EACH OF GRIT	1 EACH OF GRIT	1 EACH OF GRIT
THICK	WIDTH	LENGTH			
1/8"	1/4"	4"	150, 240, 320, 400, 600	150, 240, 320, 400, 600	150, 240, 320, 400, 600
1/8"	1/2"	4"	150, 240, 320, 400, 600	150, 240, 320, 400, 600	150, 240, 320, 400, 600
SQUARE			1 EACH OF GRIT	1 EACH OF GRIT	1 EACH OF GRIT
1/4" x 1/4"		4"	150, 240, 320, 400, 600	150, 240, 320, 400, 600	150, 240, 320, 400, 600

Abrasive Sheets | Cloth Bench Rolls | Discs and Holders

Abrasive Sheets

ALUMINUM OXIDE CLOTH AND SILICON CARBIDE WATERPROOF PAPER

- 9" x 11" Sheets
- 50 Sheets per Carton

ALUMINUM OXIDE ABRASIVE CLOTH SHEETS

ITEM NUMBER (CARTON OF 50 SHEETS)	GRIT
ABC80	80
ABC100	100
ABC120	120
ABC180	180
ABC240	240
ABC320	320
ABC400	400
ABC500	500

SILICON CARBIDE WATERPROOF PAPER

ITEM NUMBER (CARTON OF 50 SHEETS)	GRIT
ABW220	220
ABW280	280
ABW320	320
ABW400	400
ABW500	500
ABW600	600



Abrasive Cloth Bench Rolls

ALUMINUM OXIDE



50 YARD ROLLS			
1" WIDE		2" WIDE	
ITEM NUMBER	GRIT	ITEM NUMBER	GRIT
ABR601	60	ABR602	60
ABR801	80	ABR802	80
ABR1001	100	ABR1002	100
ABR1201	120	ABR1202	120
ABR1801	180	ABR1802	180
ABR2401	240	ABR2402	240
ABR3201	320	ABR3202	320
ABR4001	400	ABR4002	400

Abrasive Discs and Holders

ABRASIVE DISCS (SELF ADHESIVE)

DIA.	GRIT	ITEM NUMBER (PACK OF 50)
½	60	EPD260
	80	EPD280
	120	EPD2120
	240	EPD2240
¾	320	EPD2320
	60	EPD360
	80	EPD380
	120	EPD3120
1	240	EPD3240
	320	EPD3320
	60	EPD460
	120	EPD4120
1	240	EPD4240
	320	EPD4320

ABRASIVE DISC HOLDERS (1/8" SHANKS)

DIA.	ITEM NUMBER (PACK OF 5)
½	EPDH2
¾	EPDH3
1	EPDH4

DISC HOLDER SET

ONE EACH OF EPDH2, H3, H4
ITEM NUMBER
EPDH234



Felt Polishing Kit | Polishing Brushes | Mold Polishing and Lapping Compound

Felt Polishing Kit

NYLON HOLDERS AND FELT WHEELS

POLISHING KIT CONTENTS:

- (1) Storage Box shown at right
- (12) ¼ Felt Wheels
- (8) ½ Felt Wheels
- (6) ¾ Felt Wheels
- (1 ea.) ¼, ½, ¾ Holder

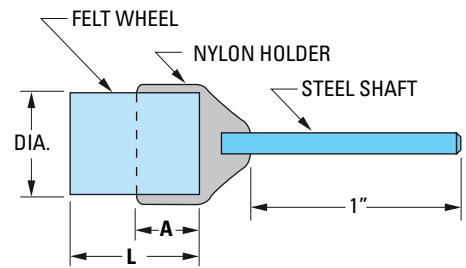


NO CENTER SCREW TO MAR THE WORK FINISH. Nylon Holders have side and bottom grips to prevent slipping.

NYLON HOLDERS*				FELT WHEELS**		
ITEM NUMBER	NOM. DIA.	SHAFT DIA.	A	ITEM NUMBER	NOM. DIA.	L
14NH	¼	⅛	¼	14FW	¼	½
34NH	¾	⅛	⅝	34FW	¾	⅝
1NH18	1	⅛	⅝	1FW	1	1 1/16
1NH14	1	¼	⅝	1FW	1	1 1/16
112NH	1 ½	¼	⅝	112FW	1 ½	1 1/16

*Sold in packs of 5 only **Sold in packs of 10 only

POLISHING KIT
ITEM NUMBER
FPK326



Polishing Brushes

AVAILABLE IN BRISTLE OR BRASS

ALL BRUSHES HAVE ⅛ DIAMETER SHANKS			
BRISTLE	BRUSH DIAMETER	STYLE	BRASS
ITEM NUMBER*			ITEM NUMBER*
PB7	⅜	END BRUSH	PBR7
PB12	½	SMALL CUP	—
PB11	⅝	LARGE CUP	PBR11
PB1	¾	WHEEL	PBR1

*PACK OF 10



Mold Polishing and Lapping Compound

FLASH POINT = 335°F
FLAMMABLE LIMIT = 345°F

DME Mold Polishing and Lapping Compound is made of an aluminum oxide abrasive powder mixed with a mineral-based carrier agent. It is an inexpensive and effective compound for polishing with brushes and brass or wood laps. Ideal for mold polishing, it can also be used for such applications as lapping bushing I.D.'s or enlarging undersized ejector pin bores.

ITEM NUMBER*	GRIT
PLC220	220
PLC280	280
PLC400	400
PLC600	600

*16 oz. can



Diamond Compound | Thinner Lubricator

Diamond Compound

FOR HIGH-QUALITY MOLD AND DIE POLISHING

Quality of mold or die finish is frequently an important factor in how a mold or die operates. DME Diamond Compound is proven to produce the finest quality finish with considerable savings in time and labor.

DME Diamond Compound contains no adulterants, nor non-graded, non-working diamond “fines”. The precision-graded diamond particles are uniformly and permanently dispersed and blended in a high-quality, universally soluble, synthetic vehicle; giving the best composition possible. It will not “cake” or dry out and is completely stable at temperatures from –50°F to +150° F, permitting high-speed mechanical polishing operations.

Available in 2½ gram, 5 gram, and 18 gram sizes.

Since DME Diamond Compound is not water soluble, the use of water as a thinning agent is not recommended. For best results, use DME THINNER LUBRICATOR to reduce the compound to its most efficient working consistency.

FINISH	ITEM NUMBER	LABEL COLOR GUIDE	NAT'L BUR. STD. GRADE	MICRON SIZE RANGE*	COMPOUND NUMBER AND DIAMOND CONTENT	APPROX. MESH EQUIVALENT
Final ultra-mirror polishing of plastics mold cavities.	DC00H	Pink	¼	0-½	½-Heavy	100,000
	DC0H	Silver	½	0-1	1-Heavy	60,000
Final high-mirror polishing of selected work such as optical quality plastics mold cavities.	DC1M	Ivory	1	0-2	1-Medium	15,000
	DC1H	Ivory	1	0-2	1-Heavy	15,000
Final mirror-polishing of high-quality plastics mold cavities, especially those producing clear plastic parts.	DC3M	Yellow	3	1-5	3-Medium	9,000 to 7,000
	DC3H	Yellow	3	1-5	3-Heavy	9,000 to 7,000
Final polishing of most plastics mold cavities.	DC6U	Orange	6	4-8	6-Universal	5,000 to 2,500
	DC6M	Orange	6	4-8	6-Medium	5,000 to 2,500
Intermediate polishing of plastics mold cavities and final polishing of die cast die cavities.	DC9U	Green	9	6-12	9-Universal	1,300
	DC9M	Green	9	6-12	9-Medium	1,300
	DC15U	Blue	15	8-22	15-Universal	1,300 to 900
	DC15M	Blue	15	8-22	15-Medium	1,300 to 900
Preliminary polishing of all plastics mold and die cast die cavities.	DC30U	Red	30	20-40	30-Universal	800 to 550
	DC30M	Red	30	20-40	30-Medium	800 to 550
	DC45U	Brown	45	30-60	45-Universal	500
	DC45M	Brown	45	30-60	45-Medium	500
Heavy stock removal. Enlarging holes in hardened steel.	DC170H	Grey-Black	170		170M-Heavy	120 to 80

*The smaller the micron size, the finer the finish.

Mold Finish Comparison Kit

Mold Finish Comparison Kit

EXPANDED VERSION – 12 SAMPLES FINISHED TO SPI STANDARDS

- Eliminates errors or guesswork in achieving desired or specified finishes
- Saves time...eliminates over-polishing
- Provides a visual and numerical standard for specifying mold/part finishes

Professionally finished to SPI standards, this kit is an invaluable tool for both selection of finishes required and comparison to work in progress. The visual and numerical standards are also helpful in communications between end user, molder and moldmaker. Each finish has been generated on a 1" diameter x 3/8" -thick piece of 420 Stainless Steel. Edges are chamfered and O.D. is knurled for safe, easy pick-up and handling. Finish numbers are stamped on the back of each sample for quick reference. A molded plaque in the kit's lid shows the part finishes that result from each mold finish.



ITEM NUMBER

MFK1200

FINISH TYPE	DESCRIPTION	ROUGHNESS AVERAGING (RA) micro-inches range	COMMENTS
A1	grade # 3 diamond buff	0-1	<ul style="list-style-type: none"> • for mirror or optical finishes • most time consuming and costly finishes to achieve • steel grade important to results (DME No. 3 or No. 5 steel recommended)
A2	grade # 6 diamond buff	1-2	
A3	grade # 15 diamond buff	2-3	
B1	600 grit paper	2-3	<ul style="list-style-type: none"> • removes all tool and machining marks
B2	400 grit paper	4-5	<ul style="list-style-type: none"> • provides good mold release
B3	320 grit paper	9-10	<ul style="list-style-type: none"> • light reflecting finish on molded part, some sheen
C1	600 stone	10-12	<ul style="list-style-type: none"> • removes all tool and machining marks
C2	400 stone	25-28	<ul style="list-style-type: none"> • provides good mold release
C3	320 stone	38-42	<ul style="list-style-type: none"> • mute finish on molded part, no sheen
D1	dry blast glass bead #11 (8" distance at 100 psi; 5 secs.)	10-12	<ul style="list-style-type: none"> • for decorative finishes
D2	dry blast # 240 oxide (5" distance at 100 psi; 6 secs.)	26-32	<ul style="list-style-type: none"> • often used for diecast and thermoset tooling • helps hide shrink marks and other imperfections
D3	dry blast # 24 oxide (6" distance at 100 psi; 5 secs.)	190-230	<ul style="list-style-type: none"> • dull, non-reflecting finish on molded or cast part

Finishing Applications

The DME Ultraform Ultrasonic Finishing and Polishing System is highly effective at rapid deburring, filing, stoning, polishing and lapping on a variety of surfaces, including EDM, tungsten carbide, and mold steel. Available in two types of ultrasonic models, the units replace costly, time-consuming hand finishing operations.

DME carries a large selection of finishing and polishing hand tools, as well as mechanical devices, that are required to complete the final contours and finishes of molds.

In addition to the Ultraform, DME carries a large selection of finishing and polishing hand tools, as well as mechanical devices, that are required to complete the final contours and finishes of molds. While mold finishers and polishers hone different techniques that are unique to each individual, most require access to a broad variety of tools and materials in order to accomplish a specific task.

Handpieces like those in the Minitor D Series perform well for light metal removal in the mold finishing process. A wide selection of carbide burrs, mounted stones and similar accessories in different shapes, sizes and grits provide the ability to achieve a preferred finish.

DME's extensive selection of files, especially riffles, offers a wide array of shapes, cuts and tooth structures. These tools are excellent at getting into areas that would be impossible to access with conventional files.

An assortment of abrasive products, including stone kits and abrasive sheets, cloths and discs, are available in various grit sizes. Polishing sticks for hand or Profiler applications are also stocked.

For that high polished "super" finish or "mirror" finish on a mold surface, DME Diamond Compound is available in three applicator syringe sizes.



Important Mold Finishing Tips

- When hand grinding in the same direction of the cutting tool rotation, use extra caution since this motion can cause the stone to cut deeper than the desired depth. Also, don't try to cover too large of an area at any one time. Working on a number of small areas and blending them together provides more uniform results.
- Use extra care to remove all foreign substances when filing over an area on which some form of abrasive has previously been used. The grit from abrasive stones or cloths will usually be charged into the surface of the metal, causing the file to dull rapidly.
- When filing an area that must be flat, crisscross file strokes. This removes waves and ripples that develop when working in only one direction.
- Stones of the same grit, but made from different abrasive materials and with a different type of bond, may produce different finishes.
- Do not mix grades of diamond compound. And, if the first grade of diamond compound used does not remove marks from the most recent stoning operation, don't continue. These marks must be removed with a coarser grade of compound or the surface will have highly polished, shiny scratches.

DME ProWeld™

RoHS/WEEE COMPLIANT
MICRO-WELDING SYSTEM
FOR PRECISION MOLD REPAIR



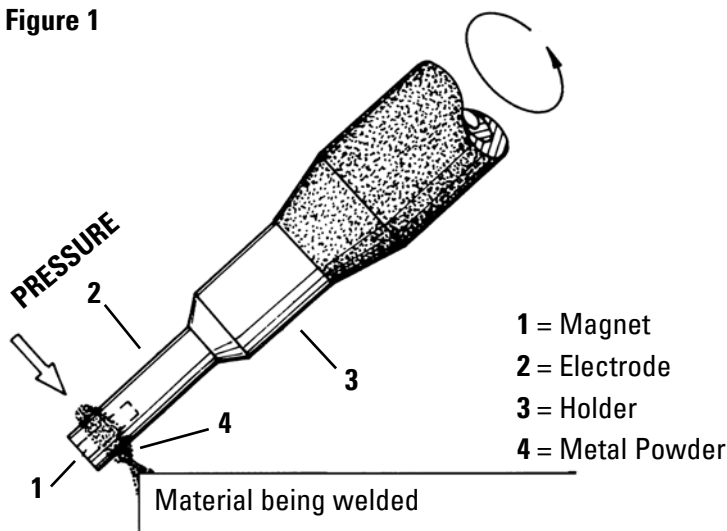
ProWeld™ Benefits

Advantages of ProWeld

- Perform high-quality repairs of very small mold areas
- Increase the life of a mold after repair
- Reduce repair costs up to 85% with special metal alloys developed for all conventional types of steel
- Modern control electronics ensure a homogenous welding pattern even under the most difficult working conditions
- Process emits almost no heat
- Weld material is not excessive – hand and machine finishing is easy
- Only gentle pressure is required on welding electrodes to prevent the formation of cavities or pin holes
- Magnetic electrodes pick up metal powder which can be easily placed on the workplate
- Suitable for all forms of mold damage; no need for other types of welding, e.g. argon, laser welding, TIG
- Safe and easy to operate, no special training needed
- Emits no harmful welding fumes or toxic gases
- No scaling or flaking. High-quality welding alloys are free of impurities. The resulting weld is strong, homogenous and reliable

Precision Mold Repairs and Alterations Made Easy with ProWeld

Figure 1



The Micro-Welding Method

With only gentle pressure ProWeld uses electrical pulses to fuse metal powder, metal sheets, strips or wire etc., to the contour of the mold under repair (Fig. 1).

Figure 2



Figure 3



Using the appropriate electrode, powder (Fig. 2), metal or strips (Fig. 3), which contain alloying properties of the material being welded, are first fused then bonded to the base metal by a systematic and controlled supply of energy.

Figure 4

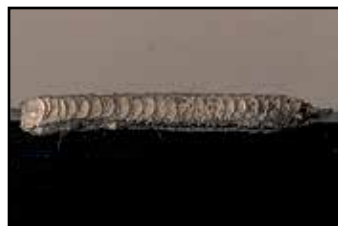


Figure 5



This produces a weld (Figs. 4 and 5) which also can be controlled by various adjustments of the power pack (frequency of the electrical pulses, output current). Special training is not needed to successfully perform this welding process.

ProWeld™ Standard Equipment

ProWeld

ProWeld Micro-Welding System Now RoHS/WEEE Compliant

As an essential resource to thousands of customers around the globe, DME is diligent in making certain its products are compatible in every region of the world. That's why every component within the Pro-Weld system satisfies all international compliances. This included RoHS (Restriction of Hazardous Substances) that prohibits or restricts the use of six potentially harmful materials in electronic equipment, and WEEE (Waste Electrical and Electronic Equipment) that requires equipment made after August 2005 to be returned to the manufacturer and recycled, rather than just "thrown away."



Standard Equipment

Complete ProWeld system includes:

(Dimensions in millimeters)

ITEM NO.	DESCRIPTION	ITEM NO.	DESCRIPTION
UMW0001	Power pack with welding cord, grounding cord and plate, power cord, foot switch and all accessories listed below	UMW0013	Standard electrode (2 dia. x 50L)
UMW0002	N51 - Standard SKH-51 steel powder (40 grams) (63Rc; for D2/M2/S7 steels)	UMW0014	Standard electrode (3 dia. x 50L)
UMW0003	N80 - Standard NAK80 steel powder (40 grams) (38-40 Rc; for P20/P21 steels)	UMW0015	Standard electrode (4 dia. x 50L)
UMW0004	NAK80 - Standard steel sheets (10 sheets, 0.1T x 5W x 100L) (38-40 Rc; for p20/p21 steels)	UMW0016	Standard electrode (1.2T x 5W x 35L)
UMW0005	NTA1 - Ni alloy sheet (10 sheets, 0.1T x 30W x 70L) (135HV; for all steels)	UMW0017	Standard electrode holder (black) (used with UMW0015)
UMW0006	NTA2 - Ni alloy sheet (10 sheets, 0.2T x 30W x 70L) (135HV; for all steels)	UMW0018	Magnetic electrode holder (black) (used with UMW0011 and UMW0012)
UMW0009	Magnetic Electrode (2 dia. x 50 L)	UMW0019	Standard electrode holder (black) (used with UMW0016)
UMW0010	Magnetic Electrode (3 dia. x 50 L)	UMW0020	Standard electrode holder (black) (used with UMW0013)
UMW0011	Magnetic Electrode (4 dia. x 60 L)	UMW0021	Standard electrode holder (black) (used with UMW0014)
UMW0012	Magnetic Electrode (4 dia. x 50 L)	UMW0022	Standard electrode holder (brown) (used with UMW0009 and UMW0010)

SPECIFICATIONS

Input Voltage	120 VAC	Control System	SCR Switching System
Consumable Power	600 VA	Auto Timer On	0.5 sec.
Output Power	700 W	Dimension (inches)	6.5 W x 17.75 D x 16 H
Output Voltage	0-9V	Weight	62 lbs.
Output Current	0-1100Amps		

Additional Welding Materials for ProWeld™

ProWeld Accessories

REPLACEMENT CORDS

ITEM NO.	DESCRIPTION
P-501	Welding Cord
P-502	Power Cord

WELDING MATERIAL: POWDER

ITEM NO.	WELDING MATERIALS	JAPANESE MOLD STEEL	QUANTITY	HARDNESS ROCKWELL C	U.S. MOLD STEEL EQUIVALENT
UMP0067	N-11	SKD-11	40 grams	Rc 50-60 Min.	A2, D2
UMP0072	N-38	HMP38	40 grams	Rc 30 Max.	All Die Steels, 420 SS (Prehardened)
UMP0073	N-39	PD555	40 grams	Rc 50-52	STAVAX
UMP0060	N-40	Ni Cr Alloy	40 grams	Rc 36-42	All Die Steels
UMP0062	N-50	Ni Alloy	40 grams	Rc 47-53	All Die Steels
UMP0068	N-61	SKD61	40 grams	Rc 40-53 Max.	H13, 420 SS
UMP0063	N-13	Ni Alloy	40 grams	Rc 10-15	All Die Steels
UMP0061	N-90	Ni Alloy	40 grams	Rc 16-20	All Die Steels
UMP0071	N-55	NAK55	40 grams	Rc 38-41	P21

WELDING MATERIAL: SHEET *(DIMENSIONS IN MILLIMETERS)*

ITEM NO.	WELDING MATERIALS	JAPANESE MOLD STEEL	QUANTITY	HARDNESS ROCKWELL C	U.S. MOLD STEEL EQUIVALENT
UMA0001	NT-6		10 - 0.2T x 5W x x100L	Rc 30	All Mold Steels
UMA0054	NS-1	SS Alloy	10 - 0.1T x 30W x x70L	Rb 90	All Mold Steels
UMA0055	NS-2	SS Alloy	10 - 0.2T x 30W x x70L	Rb 90	All Mold Steels
UMD0102	HPM-50	HPM50	10 - 0.2T x 5W x x100L	Rc 38-40	P21 Improved
UMD0107	HPM-38	HMP38	10 - 0.2T x 5W x x100L	Rc 30-33	420SS
UMD0104	STAVAX	STAVAX	10 - 0.2T x 5W x x100L	Rc 50-52	STAVAX, 420SS
UMD0101	HPM-2	SCM440, IMPAX, HPM-2	10 - 0.2T x 5W x x100L	Rc 30-50	P20
UMD0103	MAS1		10 - 0.2T x 5W x x100L	Rc 50-53	P20
UMD0106	NAK55	NAK55	10 - 0.2T x 5W x x100L	Rc 38-40	P21

WELDING MATERIAL: WIRE

ITEM NO.	WELDING MATERIALS	JAPANESE MOLD STEEL	QUANTITY	HARDNESS ROCKWELL C	U.S. MOLD STEEL EQUIVALENT
UMA0056	S2	SS Alloy	1 - 0.2 dia. x 5m	Rb 90	All Mold Steels
UMA0057	S3	SS Alloy	1 - 0.3 dia. x 5m	Rb 90	All Mold Steels
UMA0058	S4	SS Alloy	1 - 0.4 dia. x 5m	Rb 90	All Mold Steels
UMA0059	S5	ss Alloy	1 - 0.5 dia. x 5m	Rb 90	All Mold Steels

DME Molding Supplies

THOUSANDS OF AUXILIARY ITEMS
THAT HELP KEEP YOUR
PROCESSING INITIATIVES AT
PEAK PERFORMANCE



Mold Cleaner and Mold Saver

Available in 12 oz. aerosol or 1 gallon non-aerosol...
individually or by the case.

DME MOLD CLEANER

DME Mold Cleaner is used to remove corrosion-forming substances such as lactic acid, urea and sodium chloride, which are common in perspiration residues left by ordinary handling of polished cavities. In addition to cleaning the polished cavity it also provides up to 20 days rust protection at temperatures to 120°F at 100% humidity.

Use DME Mold Cleaner to clean polished mold surfaces and protect them for up to 20 days. Use DME Mold Saver for long-lasting protection from corrosion.



ITEM NUMBER	MOLD CLEANER DESCRIPTION
CLE0001	(1) 12 oz. aerosol can
CLE0012	Case of (12) 12 oz. aerosol cans
CLE0004	(1) one gallon can
CLE0016	Case of (4) one gallon cans

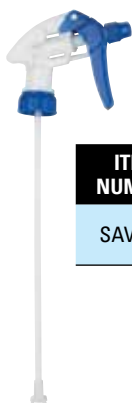
DME MOLD SAVER

DME Mold Saver is an ideal protective coating for molds to be stored over a long period of time. It protects polished cavities and all metal parts from costly corrosion damage. Its thin, transparent film averages about .0003" thick. It is soft, dry and waxy and can be easily wiped off without solvents. One gallon of Mold Saver covers about 80 square feet.



ITEM NUMBER	MOLD SAVER DESCRIPTION
SAV0001	(1) 12 oz. aerosol can
SAV0012	Case of (12) 12 oz. aerosol cans
SAV0004	(1) one gallon can
SAV0016	Case of (4) one gallon cans

ACCESSORIES FOR MOLD CLEANER AND MOLD SAVER



TRIGGER PUMPS
for 15 oz. cans

ITEM NUMBER	DESCRIPTION
SAV0003	Package of (6) trigger pumps

"SURE SHOT" COMPRESSED-AIR SPRAY CANISTER

Holds one quart of Mold Cleaner or Mold Saver. Metal can is refillable and reusable. Includes stemmed air valve and safety valve.



ITEM NUMBER	DESCRIPTION
SS1000*	1 qt. (32 oz.) capacity painted steel; choose: red, green, black or white. 2.5 lbs empty weight, includes 30 oz multi-purpose nozzle

*Please specify color after item number. Example: SS1000red

Mold Release Sprays

Mold Release Sprays

- Improves productivity and reduces rejects
- Virtually no build-up, extends the life of your mold
- Large, 16 oz. fill
- Three formulations to suit a wide range of release applications

DME's line-up of Mold Release Sprays provide production-proven value at an economical price. These long-lasting, top-quality sprays are ideal for most applications and plastics materials. They will actually improve mold cycle times while reducing scrap. Try these specially formulated Mold Release Sprays and give yourself a competitive edge.



PREMIUM SILICONE MOLD RELEASE

This premium-quality silicone mold release has been formulated to provide superior performance for most plastics molding applications. The high silicone content and standard concentration of propellants are FDA approved for food industry applications under section 175.300 of the Food and Drugs Code of Federal Regulations. This long-lasting, low build-up mold release is the ideal product for tough, sticking problems that require a top-quality lubricant.

ITEM NUMBER*

MRFS514

SILICONE MOLD RELEASE

This all-purpose silicone mold release has been formulated to provide dependable performance with outstanding economy. The long-lasting, low build-up silicone concentration is ideal for most plastics molding applications.

ITEM NUMBER*

MRES414

PAINTABLE MOLD RELEASE

Contains no silicone

This high-quality mold release is a special formulation that will not interfere with cosmetic operations such as painting, plating, hot stamping, etc. The low concentration does not promote build-up, and is ideal for styrenes and most other plastic materials. For superior results, pre-cleaning of molded parts may be desirable.

ITEM NUMBER*

MRPS114

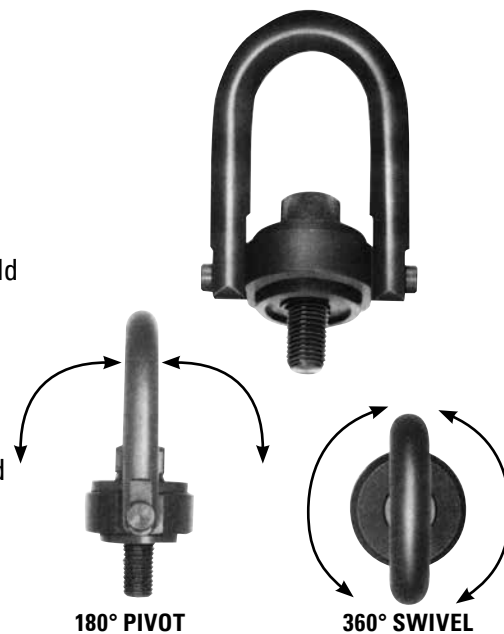
*Item numbers shown are for case of 12 cans.
To order individual cans add "CAN" to item numbers shown (e.g. MRFS514CAN).

BLANKET ORDER DISCOUNT:

Money-saving blanket orders reduce your inventory costs and permit maximum savings over a 12-month period. They are accepted provided the combined annual order totals 20 cases or more. Split shipments against blanket orders must be in quantities of 10 cases or more.

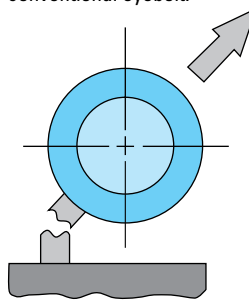
Hoist Rings – INCH

Whether you're hoisting an 800-pound mold base or a 15,000-pound piece of molding room equipment, DME Hoist Rings can add a margin of performance and convenience to the job at hand. The inherent danger posed by conventional static eyebolts (side-load breakage and hook disengagement) combined with stricter safety regulations make DME Hoist Rings an important addition to any mold shop or molding plant. Unlike eyebolts, these Hoist Rings will not yield to heavy side loads within their rated capacity and can pivot 180° and swivel 360° to compensate for pitch, roll and sway when lifting heavy, unbalanced loads. As with all mechanical devices, regular inspection for wear, and strict adherence to installation and operating guidelines is necessary to prevent failure due to misuse.



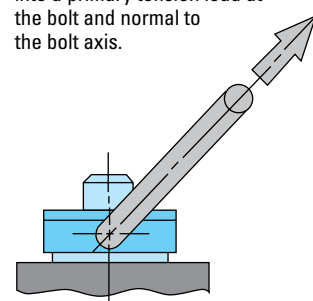
- Safer and stronger than conventional eyebolts
- Pivots and swivels to compensate for pitch, roll and sway when lifting heavy or unbalanced loads
- Prevents accidents caused by eyebolt breakage or lifting hook disengagement
- Will not yield to heavy side loads when used in accordance with manufacturer's instructions
- Manufactured from high-quality alloy steel (certified heat treatment)
- Meets or exceeds MIL-STD-1365 (OR-11) and MIL-STD-209C
- Seven sizes to handle loads from 800 to 15,000 pounds
- Safety factor is 5 times the rated load capacity in any direction

See what happens when heavy side loads are applied to a conventional eyebolt.



EXCESSIVE SIDE LOADS CAN CAUSE BOLT FAILURE.

The same load applied to a DME Hoist Ring is translated into a primary tension load at the bolt and normal to the bolt axis.



HIGH-TENSION LOADS ARE WELL WITHIN THE DESIGNED SAFETY LIMITS OF THE STRESSED HOIST RING.



Hoist Rings – INCH Installation and Ordering Information

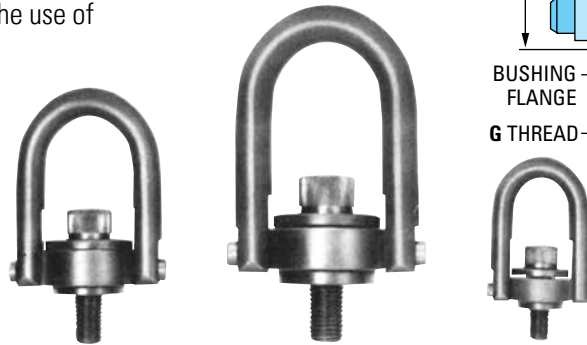
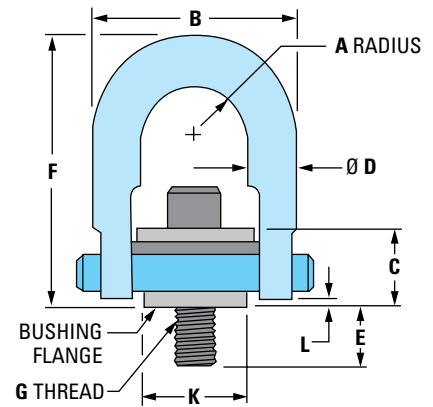
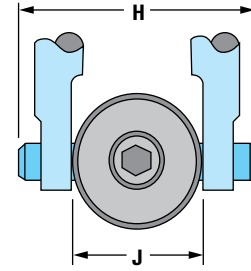
Installation Data

Tap workpiece for hoist ring bolt with axis vertical to mounting surface. Work surface should be flat and smooth to provide full 360° flush seating for the bushing flange. For installation in ferrous materials, the screw should be tightened to the full torque loading recommended in column TL below, +25% – 0.

(SAFETY NOTE: Some loosening may develop after prolonged service in a permanent installation. It is advisable to periodically retighten the mounting bolt to maintain the specified torque value.)

For maximum safety with soft metal workpieces such as aluminum, use extra length bolts with minimum effective thread engagement of 2 times thread diameter. The use of free fit spacers between the bushing flange and mounting surface is not recommended, as this will reduce the safe load rating on angularly applied loads. Hoist ring must be free to swivel 360° and pivot 180° at all times.

Material: Alloy steel (certified heat treatment), black oxide
Safety Factor: 5 times rated load in any direction
Range of Movement: 360° swivel; 180° pivot
Dimensions: Shown in inches (in)



NOTE: Additional hoist ring sizes and bolt lengths (including metric versions) are also available on request.

Hoist Rings – SHR (includes bolt and retaining ring)

ITEM NUMBER	RATED LOAD (LBS)	A RADIUS	B	C	Ø D	E EFFECTIVE THREAD PROJECTION	F	G	H CLEARANCE DIMENSION	J	K	L	TL** FOOT LBS	WEIGHT
SHR0001	800	7/16	1 5/8	41/64	3/8	9/16	2 5/8	5/16-18	2	1	3/4	3/32	7	5 OZ.
SHR0002	1,000	7/16	1 5/8	41/64	3/8	9/16	2 5/8	3/8-16	2	1	3/4	3/32	12	5 OZ.
SHR0003	2,500	7/8	3 1/4	1 5/32	3/4	3/4	4 3/4	1/2-13	3 5/8	2	1 1/2	3/32	28	2 LB. 5 OZ.
SHR0004	4,000	7/8	3 1/4	1 5/32	3/4	1	4 3/4	5/8-11	3 5/8	2	1 1/2	3/32	60	2 LB. 7 OZ.
SHR0005	5,000	7/8	3 1/4	1 5/32	3/4	1	4 3/4	3/4-10	3 5/8	2	1 1/2	3/32	100	2 LB. 9 OZ.
SHR0006	10,000	1 13/32	4 13/16	1 11/16	1	1 1/2	6 1/2	1"-8	5 1/8	3	2 5/16	17/64	230	7 LB.
SHR0007	15,000	1 3/4	6	2 1/8	1 1/4	1 7/8	8 3/4	1 1/4-7	6 1/2	3 3/4	3 1/4	11/32	470	14 LB.

**Recommended torque load +25% – 0

Replacement Bolt Kits – SHK (includes bolt and retaining ring)

ITEM NUMBER	USED WITH	SIZE	E
SHK0001	SHR0001	5/16-18 X 1 1/4	9/16
SHK0002	SHR0002	3/8-16 X 1 1/4	9/16
SHK0003	SHR0003	1/2-13 X 2	3/4
*SHK0004		1/2-13 X 2 1/4	1
SHK0005	SHR0004	5/8-11 X 2 1/4	1
*SHK0006		5/8-11 X 2 1/2	1 1/4
SHK0007	SHR0005	3/4-10 X 2 1/4	1
*SHK0008		3/4-10 X 2 3/4	1 1/2
SHK0009	SHR0006	1"-8 X 3 1/4	1 1/2
*SHK0010		1"-8 X 3 3/4	2
SHK0011	SHR0007	1 1/4-7 X 4	1 7/8



NOTES:

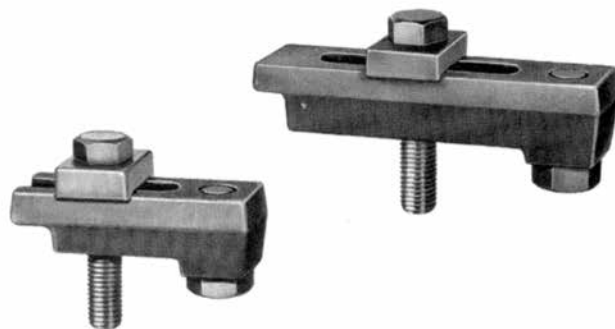
E = Effective Thread Projection

Bolts not marked with an asterisk () are identical to those supplied with hoist rings. Bolts marked with an asterisk are longer, to provide thread projection of twice the bolt diameter, recommended for use with softer metals.

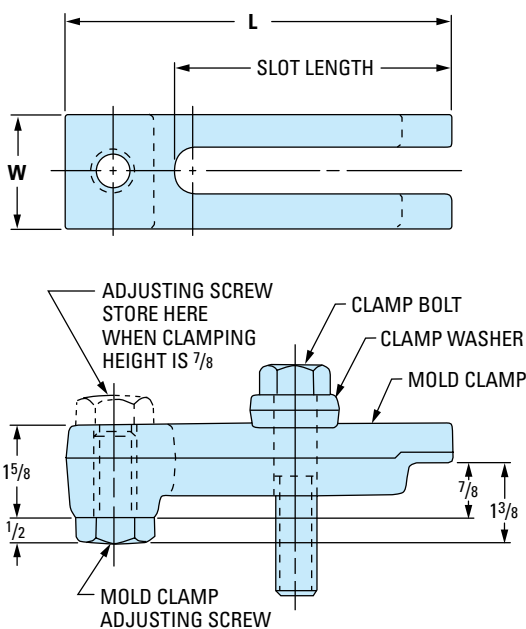
Mold Clamps

MOLD CLAMPS FOR PLASTICS MOLDS

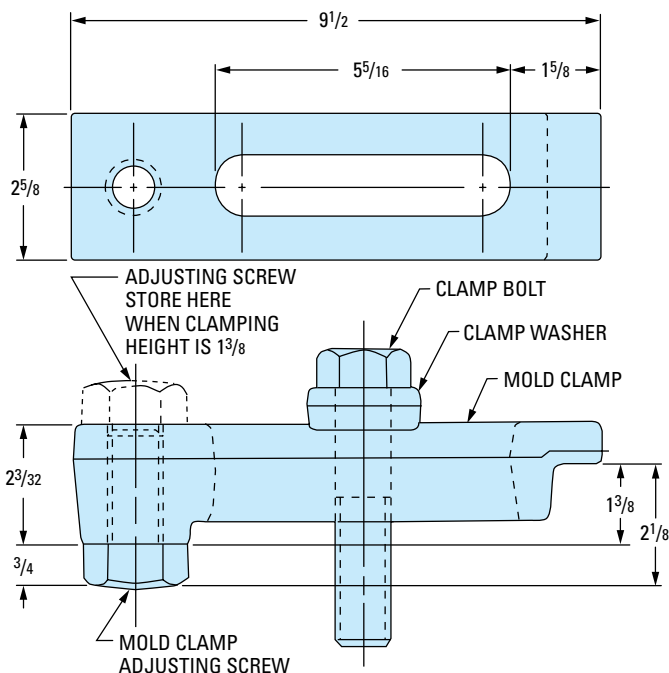
Forged from Hi-tensile steel and thru-hardened. The design features a hardened no-turn washer and a shape and range of sizes that permit universal application for any mold.



ITEM NO'S. MCA44 TO MCA67



ITEM NO. MCA895



Mold Clamps for Plastics Molds (MCA)

ITEM NUMBER	CLAMP DIMENSIONS			CLAMP SCREW SIZE* THD. x LENGTH	REPLACEMENT PARTS	
	L LENGTH	W WIDTH	SLOT LENGTH		CLAMP BOLT AND WASHER KIT	ADJUSTING SCREW
MCA44	4 ³ / ₁₆	1 ⁵ / ₈	2 ¹³ / ₁₆	1/2-13 x 3"	MCK4	MCAS5
MCA55	5 ³ / ₁₆	1 ⁷ / ₈	3 ³ / ₈	5/8-11 x 3 1/2"	MCK5	MCAS6
MCA57	7	1 ⁷ / ₈	5	5/8-11 x 3 1/2"		
MCA65	5 ³ / ₁₆	2	3 ³ / ₈	3/4-10 x 3 1/2"	MCK6	MCAS8
MCA67	7	2	5	3/4-10 x 3 1/2"		
MCA895	9 1/2	2 5/8	5 5/16	1-8 x 4 1/2"	MCK8	

***NOTE:**

Mold Clamp Screws supplied with assembly are of high-tensile strength alloy steel. Lengths shown will accommodate clamping ledges up to a maximum of 1.375. For clamping ledges in excess of 1.375, use longer screws accordingly.

Mold Assembly consists of:

- 1 – Mold Clamp
- 1 – Clamp Washer
- 1 – Clamp Bolt
- 1 – Mold Clamp Adjusting Screw

Jiffy-Tite® Connector Seals | Seal Removal Tool Kit | Heater Puller (with snap ring)

Molding Supplies | Jiffy-Tite® Connector Seals, Seal Removal Tool Kit & Wrenches, Heater Puller

Jiffy-Tite® Connector Seals

For Replacement in Either Jiffy-Tite or Jiffy-Matic Sockets

Jiffy-Tite and Jiffy-Matic Sockets are supplied with Viton seals for use with air, water or heat-transfer oil applications that do not exceed 400°F and 200 psi. Seals should be replaced periodically as required to ensure leak-free connections.

MAXIMUM OPERATING TEMPERATURE/PRESSURE = 400°F/200 PSI			
FOR USE WITH	SEAL MATERIAL (I.D. COLOR)	ITEM NUMBER*	USED WITH SOCKETS
AIR, WATER OR HEAT TRANSFER OIL	VITON (GREEN)	P2008	JS204(V/SV) TO 226(V/SV)
		P3008	JS306(V/SV) TO 328(V/SV)
		P5008	JS504(V) TO 526(V)

*Packs of 10 (sold in packs of 10 only).



Includes handle, interchangeable tools for all socket sizes, seal pick and vinyl storage pouch.

Jiffy-Tite® Seal Removal Tool Kit – JSTK

The Jiffy-Tite Seal Removal Tool Kit can be used for removal of connector seals from Jiffy-Matic Sockets (including SV Series). Can also be used with Jiffy-Tite Sockets to provide easier seal removal.

ITEM NUMBER
JSTK235

NOTE: This tool kit is not required for “the original” or current line of Jiffy-Matic Sockets with removable hose stems.

Heater Puller (with snap ring)

Provides trouble-free removal of Shoulder-Style Cartridge Heater.



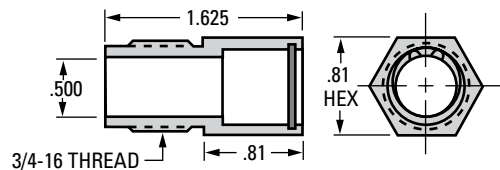
Puller with Ring

ITEM NUMBER
EHP0250

Replacement Snap Rings

ITEM NUMBER**
EHP0001

**Packs of 25.



DME Molding Supplies

The Best of Northern Supply, Nickerson and OHS

DME Molding Supplies combines three great companies – Northern Supply, Nickerson and OHS – into one comprehensive, convenient source for high-quality, economical products.

Our worldwide sourcing and purchasing power provides you with the broadest array of great products at affordable prices. We're also bringing new products to market more quickly than ever. And, with deep inventories at four locations across

North America, we can get you what you need fast.

Call toll-free to receive your copy of the DME Molding Supplies catalog, complete with dozens of new products, plus thousands of selections that have been favorites of our plastics processing customers for decades. In the U.S., call 800-626-6653; in Canada, phone 800-387-6600.

DME Molding Supplies is powered by DME Company, an essential mold technologies resource to customers worldwide.

In addition to offering the plastics industry's broadest range of market-leading products, DME provides unsurpassed knowledge, a global logistics infrastructure and exceptional service every step of the way. This support ensures that customers get the speed, accuracy and quality they need across DME's complete line of hot runner systems, control systems, mold bases and components, and moldmaking and molding equipment and supplies.

	<p>Drying Hoppers, Drawer Magnets, Storage Bins, Loaders, Tilters, Dumpers, Conveyors, etc.</p>		<p>Aluminum Manifolds, Flow Regulators, Ball Valves, Couplers, PVC Air & Water Hose, etc.</p>		<p>Insulated Heaterbands, Thermocouples, Thermometers, DIN Controllers, etc.</p>
<p>Auxiliary Equipment</p>	<p>Plumbing Products</p>	<p>Heaters and Sensors</p>			
	<p>Ceramic Knife, Sprue Pullers, Gatecutters, Electric Nippers, Mold Hammers, etc.</p>		<p>WD-40, Silicone Mold Release, Supergrease, Mold Cleaner, Anti-Seize, etc.</p>		<p>Screw Tips, Nozzle Bodies, Machine Mounts, Mold Clamps, Shutoff Nozzles, etc.</p>
<p>Cutter and Hand Tools</p>	<p>Releases and Lubricants</p>	<p>Machine Parts</p>			

Auxiliary Equipment

DRYING HOPPERS

Fully insulated, modular, stainless steel construction DRI-AIR's Modular Hoppers assure uniform material flow with: NO channeling, NO feedout problems, NO mixing problems, NO thru-put problems

- Standard capacity hoppers range from 5 to 600 lbs
- Dries less than a full hopper
- Dries material to the bottom of the slide gate
- Easy-to-clean diffuser cone directs air/material flow
- Hoppers include: slide gate, blank mounting adapter, access door (RH60 and over), insulation
- Laser-cut access doors provide a smooth, tight fit and eliminate troublesome gaskets
- RH400 & RH600 hoppers include full length sight glass and Bunting™ no-spill slide gate



STORAGE BINS

Ideal for storage and transfer of material from grinders, surge bins, bags, drums or gaylords

- Mobile
- Self-emptying
- Durable one-piece reinforced lid suitable for mounting equipment
- Lightweight
- Stackable
- Stainless steel slidegate
- Vacuum wand access tube
- Heavy-duty welded steel frame
- Forklift channel
- Locking casters



LOADERS, TILTERS AND DUMPERS

Loaders – designed to feed pellets, granules, and free flowing powders into an overhead hopper or storage vessel. Built with a variety of auger sizes and types and can deliver from 10 to 500 cu. ft. of material/hour.

- Direct gear drive for lower maintenance
- 20 cu. ft hopper capacity
- Quick disconnect auger for easy cleaning
- 45° or 60° auger slope



Tilters – designed to assist in the vacuum unloading of gaylord containers. The automatic tilting feature allows complete removal of material from the container. The adjustable regulator permits setting initial lift at any desired weight.

- 1" Pillow block pivot bearings
- Double convoluted industrial air bag – set up so bag cannot get overstressed!
- Automatic or manual tilt action
- Flow control to adjust operating speed

Box Dumpers – built to handle the tough unloading jobs! Standard unit capacity is 2,500#, larger capacities are available. The box retainer is adjustable from 32" to 48", plus there's also a permanent safety retainer bar! Push button controls permit stopping the unit at any point in the cycle for added control and safety.

- 52" wide bucket available!
- Custom width bodies – for large or awkward containers, increased lift capacity
- Custom discharge chutes

...AND MUCH MORE

Thousands of auxiliary items available beyond these popular featured products. DME Molding Supplies offers a wide variety of other high-quality, low-cost auxiliary products, including conveyors, water and oil filters, hydraulic pumps, chillers, cooling towers, end-of-arm tooling, and much, much more.



Plumbing Products

ALUMINUM MANIFOLDS

Aluminum Manifolds offer many advantages over welded steel or pipe manifolds. These manifolds have no welds or seams of any kind and cannot rust, they will offer many years of trouble-free service. The heavy wall extrusion will withstand extreme abuse and the round center hole permits easy cleaning. We will custom make manifolds to your dimensions in just a few days.

- Rated to: 1000 PSI – air;
3000 PSI – hydraulic
- Heavy wall extruded 6061 aluminum
- No welds! No rust!
- Very low cost
- Easy to clean



FLOW REGULATORS

Provide a unique, leak-free, singlepoint manual flow control. Incorporates the proven mechanical flowmeter and integral needle valve in a compact design. Very few moving parts improve reliability and leak-free operation. Brass valve, EPDM O-rings, and polysulfone viewing window are compatible with most process liquids. Brass quick-connect fittings are available.

- Compact size works well in restricted-space locations
- Rugged construction gives years of dependable service
- 240°F (115°C) temperature rating allows installation into a wide range of applications
- Optional temperature gauge displays additional process information
- No mounting restrictions – ease installation in any position without extra brackets or hardware



HYDRAULIC COUPLERS

Double side shut off poppet type in Steel, Stainless Steel and Brass. Available with Buna-N or Viton seals.

Hardened nipples and sleeves and solid barstock construction assure a long service life providing maximum resistance to hydraulic shock and abuse common in industrial applications.

- Steel Body – body, sleeve and valve are zinc plated steel
- 303 Stainless Steel – body, sleeves, valves, retaining rings, springs and locking balls are stainless
- Brass body – body, sleeve and valves are brass



PVC AIR & WATER HOSE

- Clear, red or blue
- Tough yet lightweight
- Very flexible
- Highly abrasion resistant
- Food grade PVC
- Resistant to most chemicals
- Temperature range:
-20° to 150°F (-5° to 65°C)



FORGED BRASS BALL VALVES

- Super-port BBV-MF is a full port 2-piece ball valve with features only found on more expensive valves
- Extra heavy-duty bottom-loaded stem with a TPE thrust washer and Viton O-ring
- TPE seats, thrust washer and stem packing
- Self cleaning chromium plated brass ball for maximum durability



...AND MUCH MORE

Thousands of plumbing items available beyond these popular featured products. DME Molding Supplies offers a wide variety of other high-quality, low-cost plumbing products, including brass and steel hydraulic pipe, high-flow cascade assemblies, pipe elbows and fittings, hose assemblies, and much, much more.



Heaters and Sensors

MICA INSULATED HEATERBANDS

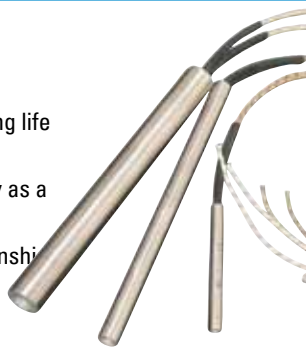
Time tested materials & manufacturing techniques make this heater a proven, economical, reliable performer.

- 1- and 2-piece bands
- Fiberglass leads, stainless leads and post terminals
- 120 and 240 volt styles
- Uniform heat, high-watt density
- Custom bands available in rush and standard time options



CARTRIDGE HEATERS

- A superior for use where high watt densities, high temperatures and long life are required
- Widely used throughout the industry as a rugged dependable heat source
- High-quality materials and craftsmanship



THERMOCOUPLES

Variable immersion depth of 1 $\frac{1}{4}$ " to 1 $\frac{3}{4}$ " with a tip length of 2 $\frac{1}{2}$ ". These will accommodate most requirements in either a straight or 90° bend. Off the shelf delivery and a very low price make our standard thermocouples just what you need. Also available in K & RTD types.



NON-CONTACT IR THERMOMETERS

Compact thermometer with wide temperature range

- Measures temperature from -58 to 1000°F with 0.1° resolution up to 199.9°
- Built-in laser pointer identifies target area
- 2000 counts backlit display
- Overrange indicator
- Automatic Data Hold when trigger is released
- Fixed 0.95 emissivity covers 90% of surface applications
- Auto power off
- Complete with 9V battery



ELECTRONIC COMPONENT REPAIR SERVICE

Quick repairs normally less than 10 working days. Cost savings. Total reliability, all repairs are fully load tested. One full year warranty on both printed circuit board repairs as well as on complete control repairs. We repair ALL types of industrial electronic controls: temperature controllers, programmable controllers, timers and counters, instrument and machine tool controls, AC and DC drives, thousands of new models added.

- Usually less than 1/2 the cost of a new controller
- We repair all types of controllers
- Fast, low-cost, warrantied repair by qualified specialists
- Over 60,000 schematics in our library



DIN CONTROLLERS

Single channel controllers include a universal sensor input with up to three outputs that can be programmed for heat or cool temperature control, or to operate as process or deviation alarms.

- Infrared communications
- Up to three outputs
- Ramp to set point
- Dual displays
- Variable Burst Fire – prolongs heater life



...AND MUCH MORE

Thousands of heating and sensor items available beyond these popular featured products. DME Molding Supplies offers a wide variety of other high-quality, low-cost heating and sensing products, including variable transformers, modular temperature controllers, wire and wire fittings, contactors, relays, and much, much more.



Cutter and Hand Tools

CERAMIC KNIFE

Heavy duty handle with Ceramix™ Q10 blade. Adjust the cutting angle between the blade and the material for best results and to prevent scratches. Flip blade for 2 types of jobs. OSHA Friendly! Even though ceramic blades remain sharp FAR longer than metal blades, it's practically impossible to cut yourself with them!



Unique Dual Blade Design!

- Cleans up to 6mm (0.236") sheets
- Cleans up to 4mm (0.157") sheets
- Cleans up surfaces

ELECTRIC NIPPERS

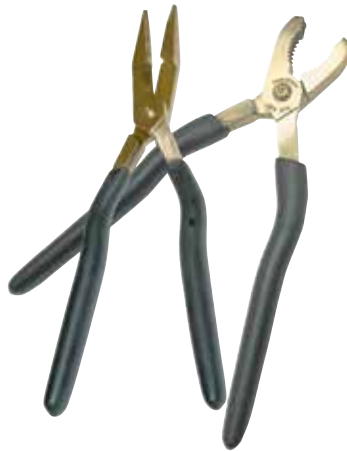
Just plug them in and they're ready for continuous use. Well balanced and comfortable to hold for many hand sizes.

- Weight 290g; AC power source (110v)
- Single stroke or continuous cut
- High speed and high power
- The blade opening and speed can be freely adjusted in the range of 2-5 times per second
- A control circuit is built into the body. Transformers or control box is not needed.



BRONZE SPRUE PULLERS

- Strongest forged bronze alloy – Ampco 45; Alloy 630; AMS 4640
- Non-scratch – ideal for removing sprues and parts without damaging mold surfaces
- Non-spark – for work around fuels, solvents, and other flammable chemicals
- Non-magnetic – for work around MRIs and magnets
- Corrosion Resistant – for work outdoors, marine use and corrosive environs
- Thermal insulating, soft touch foam grip – to reduce fatigue and CTDs
- Longer double ergonomic handles – for high leverage, less operator force
- Easily re-sharpened



MOLD HAMMERS

Mold Hammer with Interchangeable Tips

- Tips are removable and interchangeable
- Will not mar metal or plated finish
- Tips available in medium or hard vinyl, tough nylon, brass and steel
- Non-sparking
- Non-magnetic



GATECUTTERS

- 5 styles/sizes available
- Low-cost, high-quality
- Slim blade design
- Resharpens well
- Smooth action
- Spring is steel coil
- Very sharp
- Smooth flat cut
- Better than competitive gate cutters!



...AND MUCH MORE

Thousands of cutters and hand tools available beyond these popular featured products. DME Molding Supplies offers a wide variety of other high-quality, low-cost cutters and hand tools, including brass mold tools, sprue punches, nozzle wrenches, deburring tools, barrel brushes, hammers, blowguns, flashlights, and much, much more.



Releases and Lubricants

WD-40■ **Displaces Moisture.**

Formulated for ultra-high surface attraction to metal. It completely covers surfaces, including microscopic irregularities, even in the presence of moisture. A non-conductor of electricity and quickly eliminates moisture-induced short circuits.

■ **Penetrates.**

Ultra-high surface attraction results in a super penetrating action that loosens rust-to-metal bonds and frees stuck, frozen, or rusted metal parts.

■ **Protects.**

Deposits corrosion-resistant ingredients over the entire surface area, including microscopic irregularities. This protective barrier shields against moisture and other corrosive elements.

■ **Cleans.**

Ultra-high surface attraction enables it to get under dirt, grime, caked grease, and oil to clean the surface at WD – the same time it forms a corrosion resistant barrier.

■ **Lubricates.**

Ultra-high surface attraction assures the lubricating ingredients will be widely dispersed and tenaciously held to all moving parts.

**SLIDE NEXGEN METAL & MOLD CLEANER**

Direct alternative to trichloroethylene and methylene chloride. Food approved. Leaves no oily residue. No global warming compounds. Not a hazardous air pollutant. Non-corrosive and not SARA reportable. Biodegradable and rinses with water. Meets tough health, safety and environmental regulations. High solvency for resins, polymers and dies. Formulated purely from citrus and vegetable products. It meets or exceeds the toughest health and safety issues, without sacrificing RAW CLEANING POWER. Biodegradable, it easily rinses away with water and leaves no residue.

- General cleaning and wiping
- Oil spill clean-up
- Ink, tar and adhesive removal
- Paint and graffiti removal
- Removing silicone and lithium grease
- Degreasing

**SLIDE ECONOSPRAY 6 SILICONE MOLD RELEASE**

Works efficiently on both cold and hot molds. It is CFC-free and free of chlorinated solvents. Econo-Spray® Silicone imparts a smooth, dry film, which is FDA approved and USDA approved for food machinery. Operating temps: 35°F – 600°F

- No ozone depleting chemicals
- Non-chlorinated
- No methylene chloride
- No Chlorofluorocarbons (CFCs)
- Safe on solvent-sensitive plastics

**COPPER & NICKEL ANTI-SEIZE**

- Will not bleed, separate or harden
- Choose copper or nickel base
- Copper rated to 2000°F
- Nickel rated to 2800°F
- Eliminates galling and seizing
- Suggested for nozzles, screw tips, cylinder bolts, mold clamps, etc.

**SLIDE SUPERGREASE**

Colorless. Odorless. Non-toxic. FDA dielectric. Contains TPFE. Will not freeze, melt, gum up. Compatible with other lubricants No silicones. Will not wash out. USDA listed H1. Repels water. Will not separate, run or fall out. Thixotropic properties provide excellent mechanical stability when sudden temperature changes occur. Exceptional load-bearing properties. Clear, clean, non-yellowing grease. For injection molds, mold assemblies, especially medical and food grade plastic parts. Prevents corrosion. Oper. temps: -65° to +650°F

**...AND MUCH MORE**

Thousands of auxiliary items available beyond these popular featured products. DME Molding Supplies offers a wide variety of other high-quality, low-cost releases /lubricants /cleaners, including RTV silicone, GoJo® Hand cleaners, Boltlockers, Metal Polish, TPFE thread sealant (both liquid and tape), and much, much more.



Machine Parts

SCREW TIPS

Top quality general purpose 3-piece Screw Tip of the Free-Flow design. Suitable for most molding applications including moderately abrasive or filled materials. Much tougher and longer lasting than standard OEM or H-13 Screw Tip. Manufactured from a combination of steels that provide wear-resistance in components subject to wear plus toughness and torque resistance in components subject to these stresses. Through hardened and Nitrided for long service.



MACHINED MOLD CLAMPS

Machined Mold Clamps fit $1\frac{15}{32}$ " $2\frac{29}{32}$ " or $1\frac{3}{8}$ " mold flanges and can be inverted for other size flanges.

- Low cost
- Nice finish
- Machined accuracy
- Versatile fit and design



NOZZLE BODIES

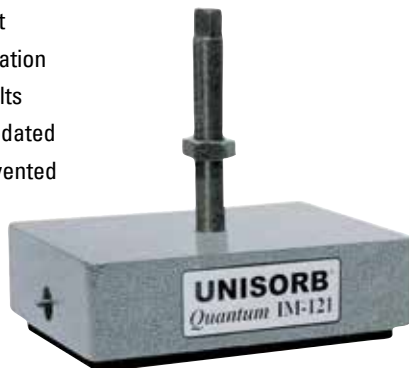
- Made of high-quality 4140 tool steel
- Holds removable tips
- Extension tips and dispersion tips
- Externally heated



MACHINE MOUNTS

UNISORB Quantum IM Mounts provide optimum leveling and alignment in minutes, without anchoring either the machine or mounts to the floor. Designed especially for injection molding and die casting machines, UNISORB Quantum IM Mounts dampen both vertical and horizontal impacts found in reciprocating machines. UNISORB Quantum IM Mounts meet applicable OSHA requirements.

- Increased equipment life
- Simplified machine installation
- Fast, accurate alignment
- Reduced shock and vibration
- Elimination of anchor bolts
- Uneven floors accommodated
- Machine "walking" prevented



SHUTOFF NOZZLES

EXTERNAL SPRING – external spring activated shut-off pin.

SHUT-OFF PIN – externally activated shut-off pin permits unrestricted material flow during injection.

REPLACEABLE TIP – special hardened tool steel tip can be changed in seconds.

AUTOMATIC OPERATION – operation is fully automatic and mechanical.

- Completely mechanical, automatic operation
- No internal springs
- Eliminates cold slugs
- Controllable back flow during injection
- Reduces flashing
- Precise pressure control during cure
- Positive shut-off prevents drooling



...AND MUCH MORE

Thousands of machine parts available beyond these popular featured products. DME Molding Supplies offers a wide variety of other high-quality, low-cost machine parts, including mixing nozzles, locating rings, sprue bushings, socket head cap screws, hoist rings, and much, much more.

