



# Technical Guide: How To Adjust Your DME Conformal Sprue Bushing To Your Application

DME's Conformal Cooled Cold Sprue Bushing opens up a wide range of possibilities for the processing of resins in the injection process. The new DME Conformal Cooled Bushing allows the use of a larger sprue diameter helping to reduce the pressure required to fill your part. The benefits include:

- Lower scrap
- Ability to operate on a smaller, more economical press.
- Consistent quality
- Shorter Cycle Time

DME's Conformal Sprue Bushing, deliver substantial returns with minimal investment.

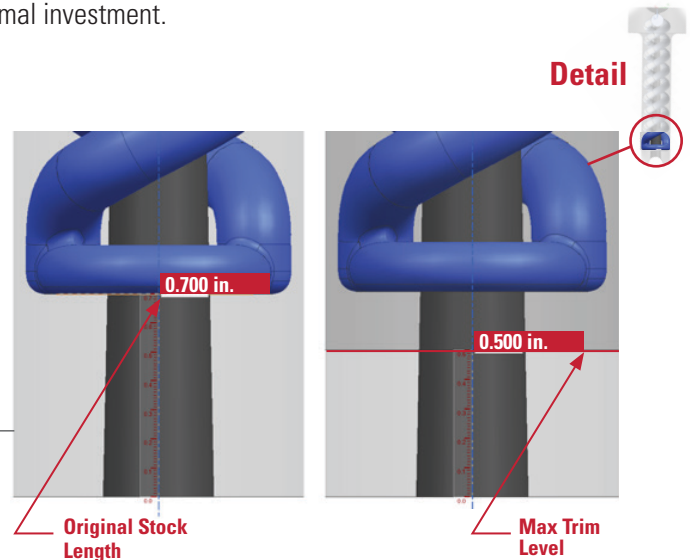


**DME Complete Thermal Management**

## MACHINEABLE TO MATCH YOUR STACK HEIGHT

DME's Conformal Cooled Components are available off the shelf, but more importantly, have been engineered to allow you to easily adjust your length to your specific requirements. This allows for variances in mold stack height, and enables you to machine the component so that the cooling channels are optimally located.

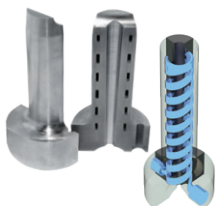
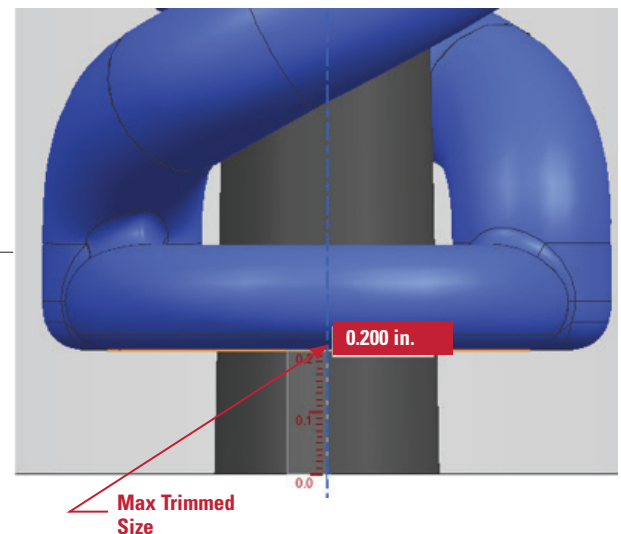
Up to 0.500 of an inch can be removed for required applications.



## BUILT TO LAST

Made from MS-1 (Maraging Steel) and hardened to 52-54Hrc for long life performance. It is recommended that any modifications to the product be performed using wire EDM.

A minimum of 0.200 of an inch of stock is required at the end of the bushing to maintain safe function.



**DME**  
COOLING Solutions

Contact DME:  
Email: [mech\\_eng@dme.net](mailto:mech_eng@dme.net)  
Or visit us at: [www.dme.net/cooled-sprue-bushing](http://www.dme.net/cooled-sprue-bushing)



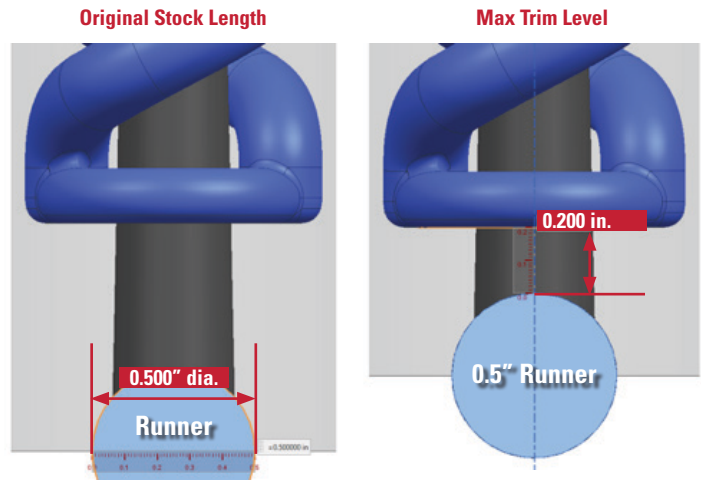


## Cooled Sprue Bushings

### RUNNER SYSTEMS AND ADAPTATIONS

Just like DME's standard Cold Sprue Bushings, the B-TRUP-Series Conformal Components are adaptable to a wide assortment of runner styles and sizes.

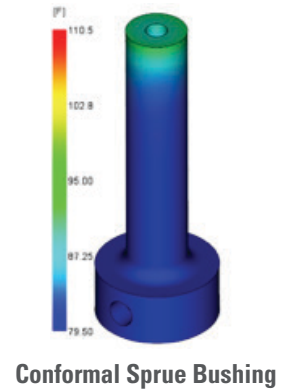
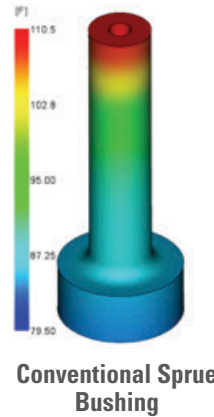
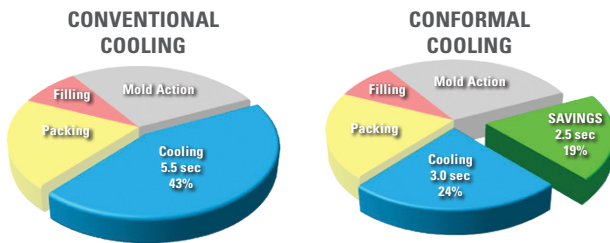
A minimum of 0.200 of an inch of stock is required at the end of the bushing to maintain safe function.



### CONFORMAL BENEFITS

Thermal analyses results show that using a cooling medium, temperatures are greatly reduced throughout the Conformal Bushing. **This offers multiple benefits.**

- Reduced part stress
- Shorter cycle times
- Lower overall cost
- Reduced scrap and waste



### TIRED OF LONGER CYCLE TIMES WAITING FOR THE SPRUE TO COOL?

**B-TRUP-Series Conformal Sprue Bushings will** shorten cycle times, improve part quality, and avoid unwanted stringing.



**We at DME strive for customer satisfaction.**  
We are committed to ensuring quality products, and delivery of those products in a timely manner.



Contact DME:  
Email: [mech\\_eng@dme.net](mailto:mech_eng@dme.net)  
Or visit us at: [www.dme.net/cooled-sprue-bushing](http://www.dme.net/cooled-sprue-bushing)

