

CVe Monitor

General Description

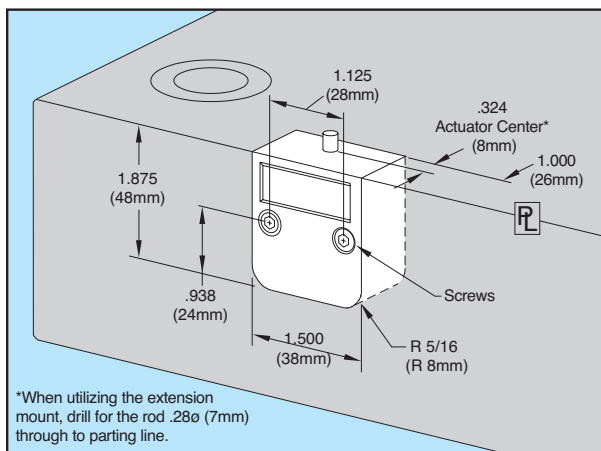
Expanding the line of CounterView® products, the new CVe Monitor tracks mold activity, allowing users to view the data on the display or from comprehensive reports.

Features

- 7-digit LCD display with a push button to move through the display modes.
- Mini USB connectivity for data retrieval.
- Flash drive included for storage of prints, BOM, setup instructions, etc.
- Instruction label on front.
- Battery lasts 5+ years.
- Same footprint as the mechanical cycle counter.

Technical Specifications

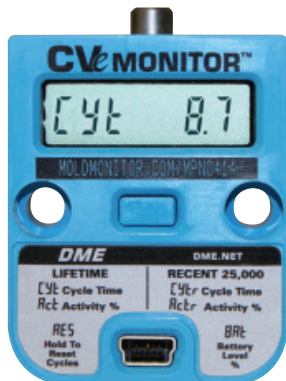
- Water resistant, rated NEMA enclosure 1 and IEC enclosure class IP10.
- Max temperature: 190° F (90°C). Can be installed in rails away from parting line with the extension mount version.
- Provided at -25 cycles to allow for set up.



ITEM NUMBER	MOUNTING STYLE	SCREWS (2)
CVEPLID	Parting Line	#8-32 x 1" SHCS
CVEPLMD	Parting Line	M4 x 25mm SHCS
CVENTID	Extension (Includes 6.5" rod)	#8-32 x 1" SHCS
CVENTMD	Extension (Includes 165mm rod)	M4 x 25mm SHCS

OEM-Specific CVe Monitors available with additional features and reporting capabilities. Contact DME for more information.

CVe Monitor is a trademark of AST Technology GmbH



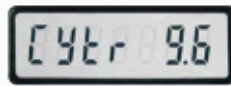
US Patent No. 5,571,539
Canadian Patent No. 2,166,237
European Patent No. EP726129
Others issued and pending.



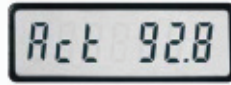
Cycle Count – Total cycles for the life of the mold is presented on the main screen of the CVe Monitor.



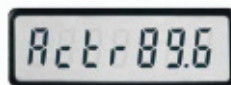
Cycle Time – Beginning with the first production cycle, the cycle time is shown in seconds for the life of the mold.



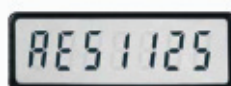
Cycle Time-Recent – Cycle time for the past 25,000 cycles.



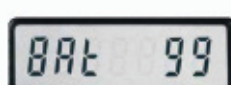
Activity Percentage – The percentage of time that the mold has been active versus idle or in sleep mode.



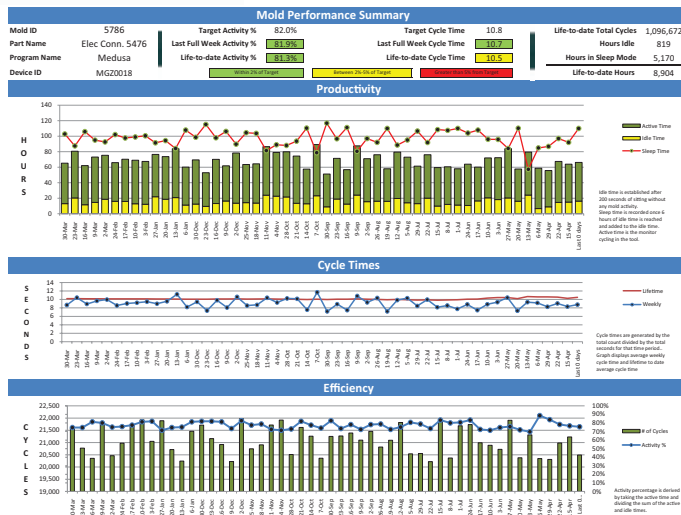
Activity Percentage-Recent – The percentage of time the mold has been active in the past 25,000 cycles.



Cycle Count Reset – A separate counter that can be reset to 0 for interim monitoring of cycles.



Battery Life – Shows the percentage of battery life remaining. At 5%, the display will alert the molder to replace the unit.



Drive comprehensive reporting using data from the CVe Monitor.