



# MULTI-COUPLING SYSTEMS





## Multi-Coupling systems

This flexible Multi-Coupling system leads to shorter preparation times and provides better safety conditions when changing mold cooling connections. It features the same high quality as DME's popular lines of Jiffy Tite and Universal connectors.

Advantages of the DME Multi-Coupling system:

- Safe connection
- Time savings when converting molds / injection molding machines
- Can be bolted single-handed, built-in safety pin
- Central position of the locking mechanism
- Stable, anodized aluminium plates, easy to handle
- Precise guidance through bronze bushings and hardened pins
- Brass coupling elements from DME's popular line of Jiffy Tite and Universal connectors
- Can be coupled under pressure
- For water temperatures from 5°C to 120°C

Visit our eSTORE:  
**[estore.milacron.com](http://estore.milacron.com)**

**eSTORE**  
  
[estore.milacron.com](http://estore.milacron.com)

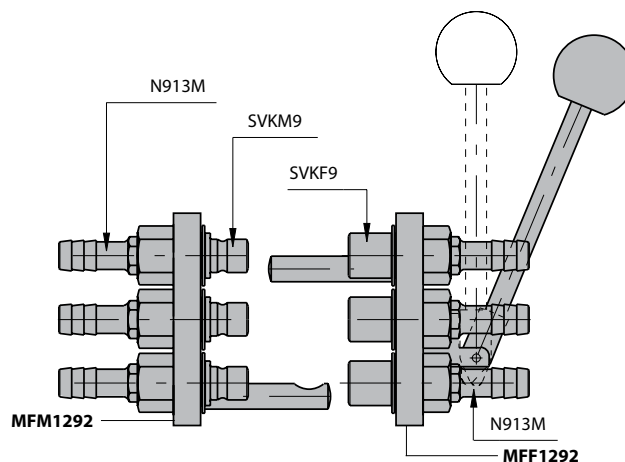
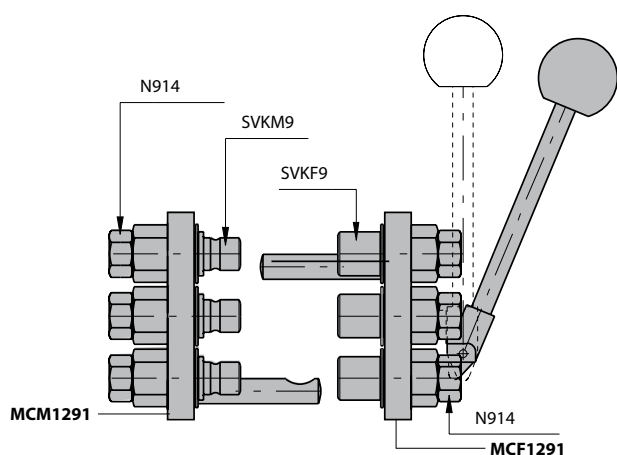


## DME Jiffy Multi-Coupling



MCM - MCF - MFM - MFF

Multi-Coupling System 6 + 6 couplings

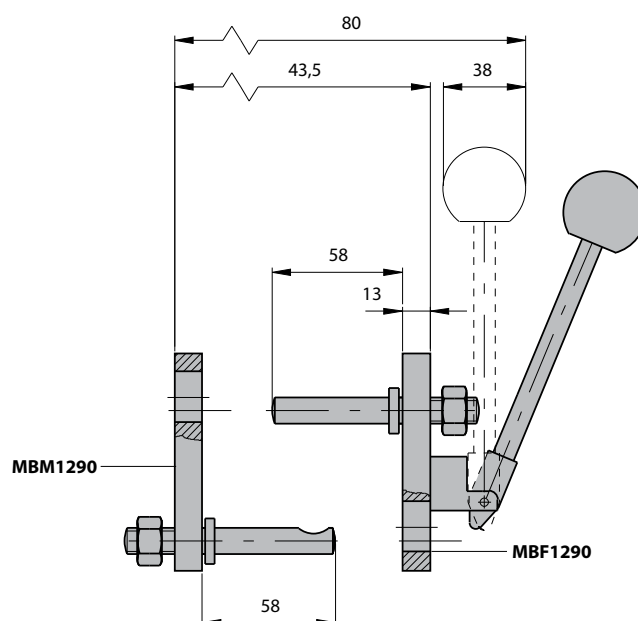
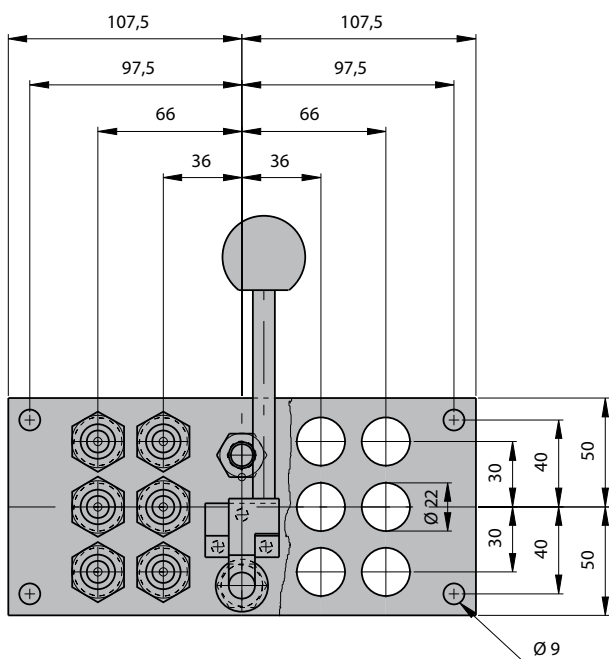


REF	Plug	Thread	Position
<b>MCM1291</b>	N914	1/4" BSP	mold side
<b>MCF1291</b>	N914	1/4" BSP	injection machine side

REF	Plug	Connection	Position
<b>MFM1292</b>	N913M	Ød 13 mm	mold side
<b>MFF1292</b>	N913M	Ød 13 mm	injection machine side

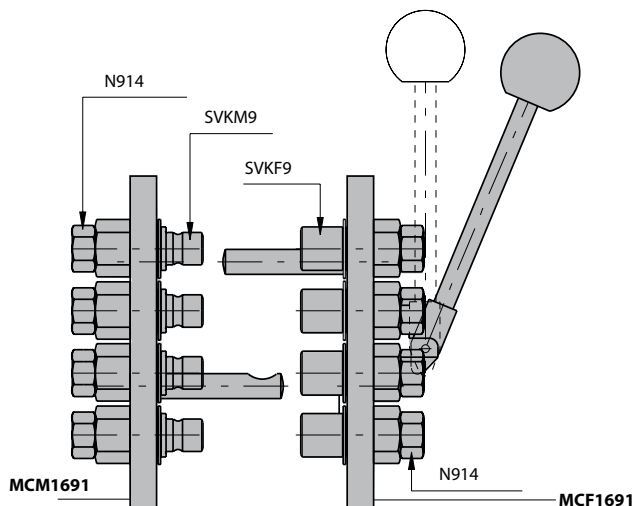
MBM - MBF

Plate for 6 + 6 couplings



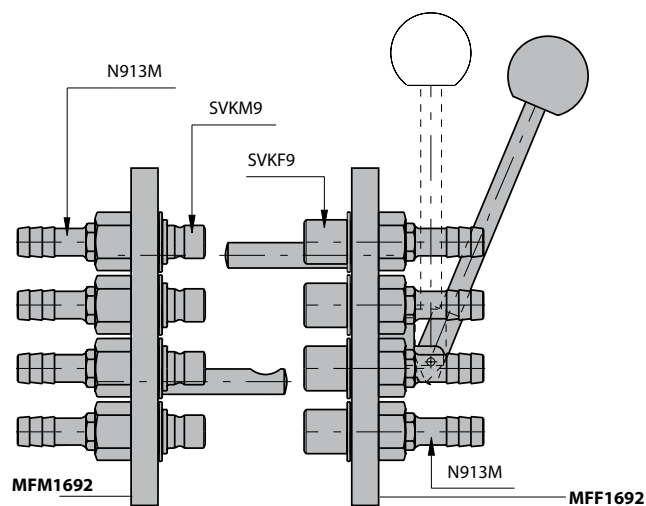
REF	Position
<b>MBM1290 (plate only)</b>	mold side
<b>MBF1290 (plate only)</b>	injection machine side

## Multi-Coupling System 8 + 8 couplings



REF	Plug	Thread	Position
<b>MCM1691</b>	N914	1/4" BSP	Mold side
<b>MCF1691</b>	N914	1/4" BSP	Injection machine side

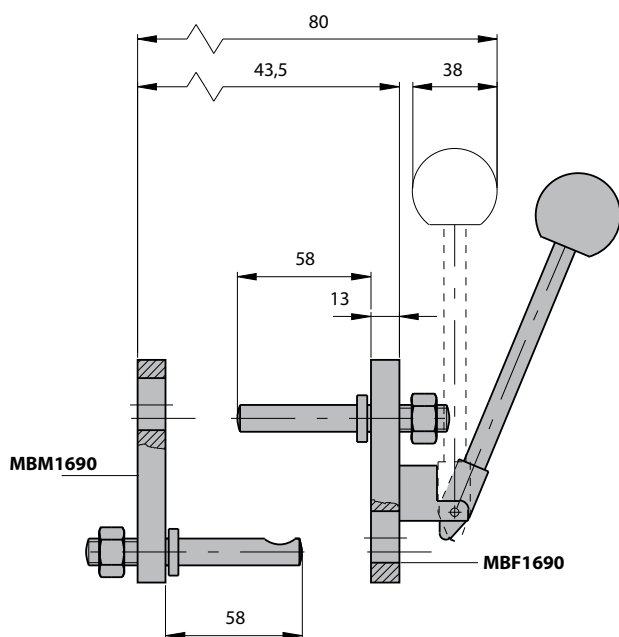
## MFM - MFF - MCM - MCF



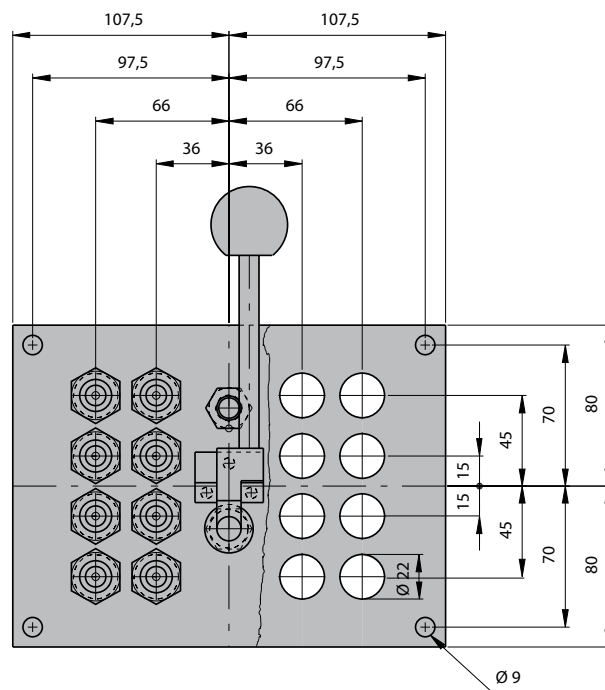
REF	Plug	Thread	Position
<b>MFM1692</b>	N913M	Ød 13 mm	Mold side
<b>MFF1692</b>	N913M	Ød 13 mm	Injection machine side

## Plate for 8 + 8 couplings

## MBM - MBF



REF	Position
<b>MBM1690 (plate only)</b>	mold side
<b>MBF1690 (plate only)</b>	injection machine side



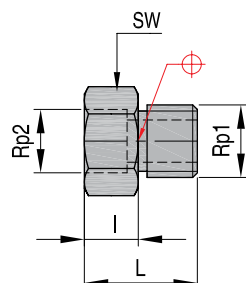


N9

Adapter

Mat.: Brass

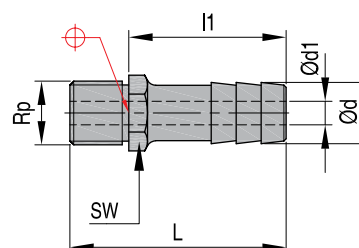
REF	Rp1	Rp2	L	I	SW	Series
N914	UNEF 5/8"-24	1/4" BSP	18	11	19	N9



Hose Nipple

Mat.: Brass

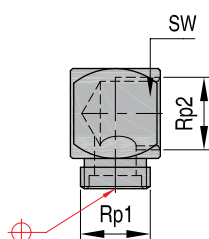
REF	Rp	d1	d	L	L1	SW	Series
N911M	UNEF 5/8"-24	9	11	33	27	16	N9
N913M	UNEF 5/8"-24	9	13	33	27	16	N9



90° Angle Adapter

Mat.: Brass

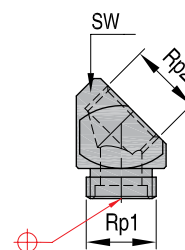
REF	Rp1	Rp2	R	SW	Series
N990	UNEF 5/8"-24	UNEF 5/8"-24	-	21	N9



45° Angle Adapter

Mat.: Brass

REF	Rp1	Rp2	SW	Series
N945	UNEF 5/8"-24	UNEF 5/8"-24	21	N9

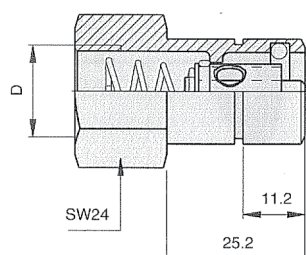
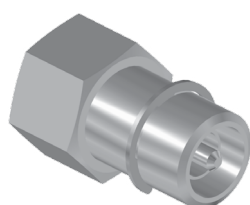


SVKF9

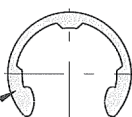
Female Threaded Shut off coupler

Mat.: Brass

REF	D	Position
SVKF9	UNEF 5/8"-24	Mold side



MCF3004

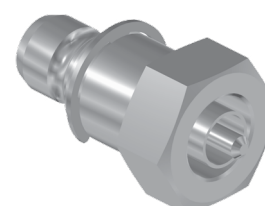
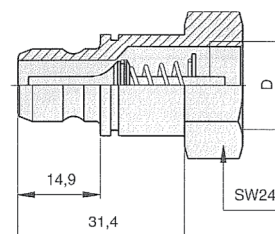


SVKM9

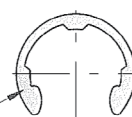
Male threaded shut off coupler

Mat.: Brass

REF	D	Position
SVKM9	UNEF 5/8"-24	Injection machine side



MCF3004





## Universal Multi-Coupling



## Info

### How to order

**When you need a complete system, your order must include 3 elements:**

A MUF plate, which includes all couplings, like the one in the picture ( example of a 3+3 system)



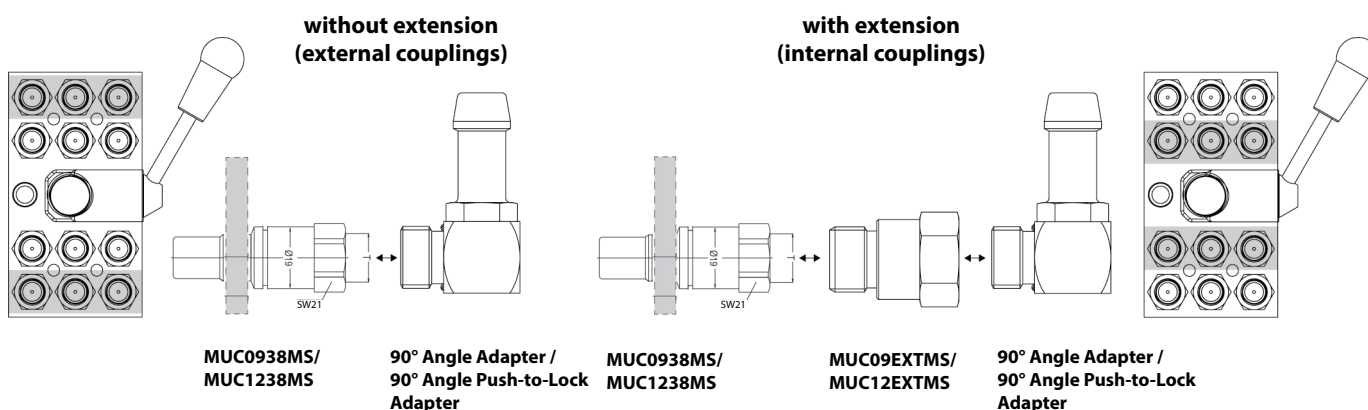
A MUM plate, which does not include couplings, like the one in the picture (example of a 3+3 system)



The MUC couplings that you want to have on your MUM plate, see instructions below and list of parts at page 13 and 19.

## Info

### Installation options



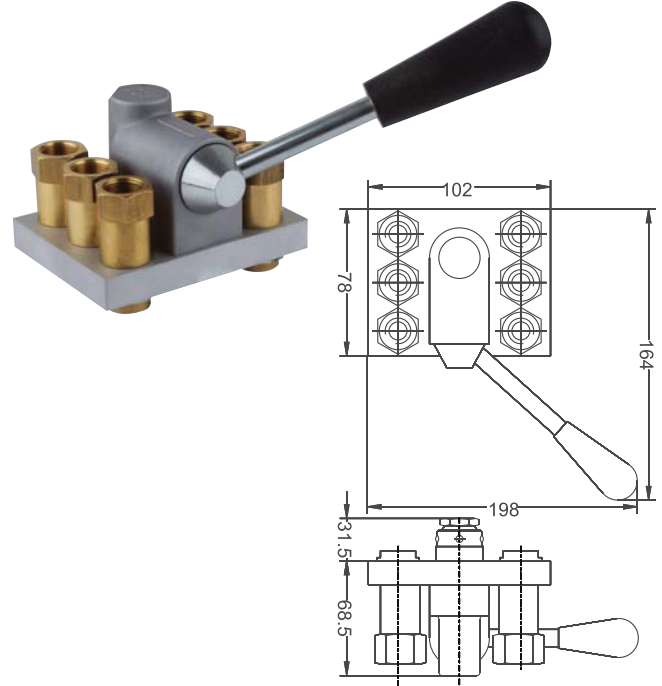
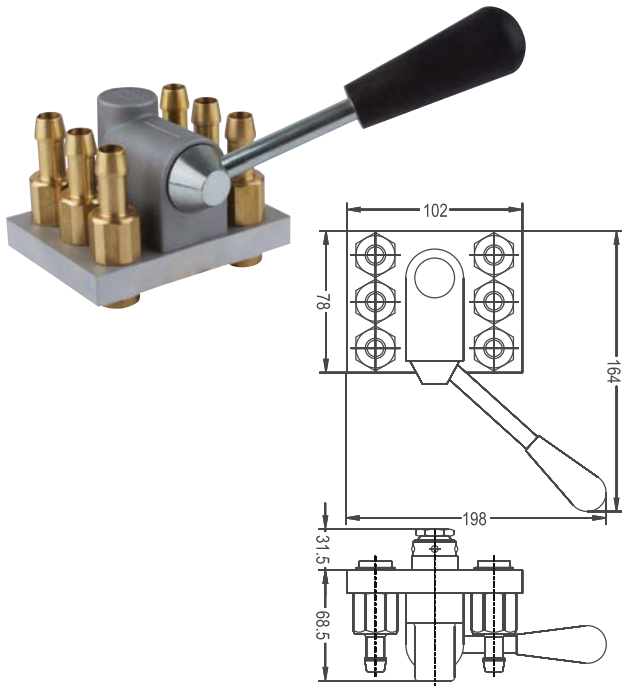
Coupling to be installed on **MUM** plate is **MUC0938MS/MUC1238MS**

On **MUC0938MS/MUC1238MS** you can mount a **90° angle adapter** with or without the extension **MUC09EXTMS / MUC12EXTMS**



## Multi-coupling system 3 + 3 couplings, 09 series

MUF

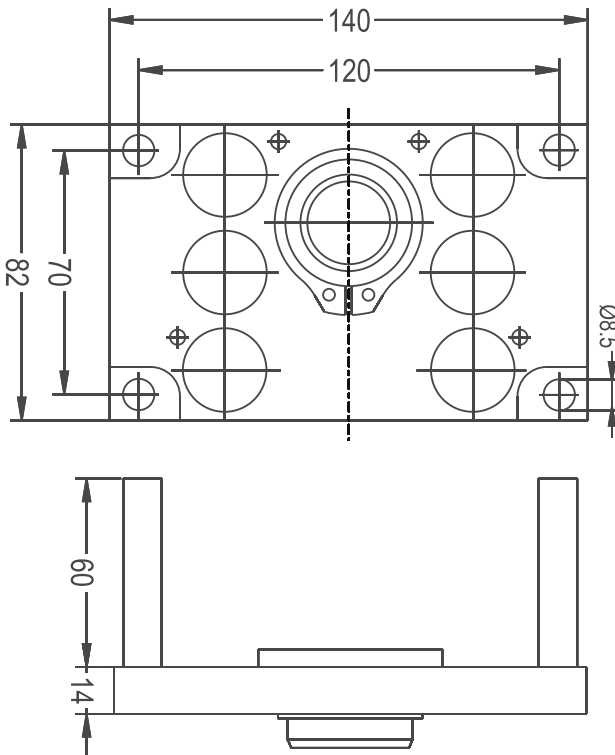


REF	D	Position
MUF 093310	Ø10	Injection machine side
MUF 093312	Ø12	Injection machine side

REF	D	Position
MUF093338	BSP 3/8"	Injection machine side

## Mold plate for 3 + 3 couplings, 09 series

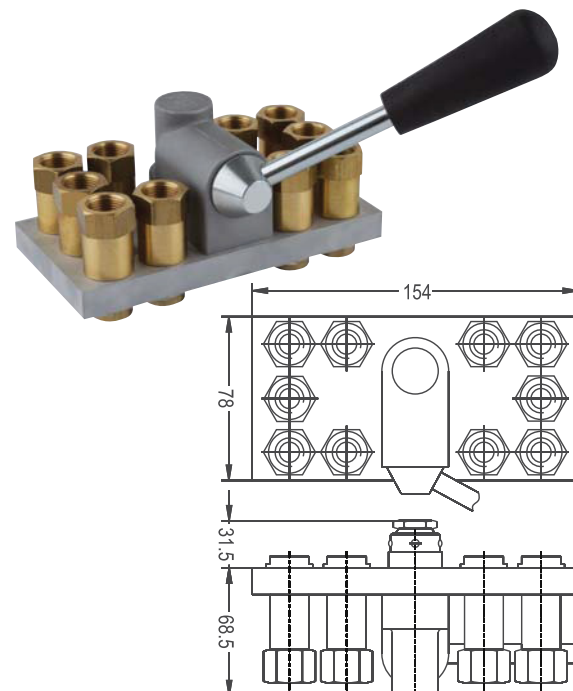
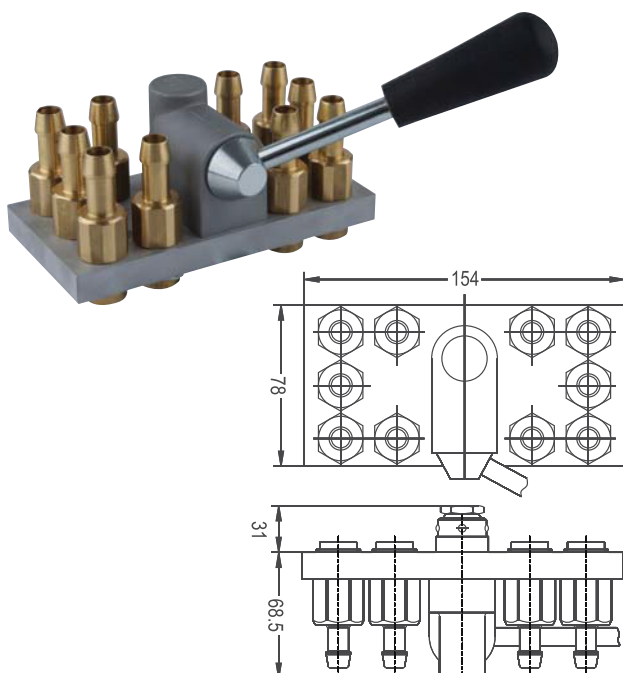
MUM



REF	Position
MUM0933	Mold side

MUF

Multi-coupling system 5 + 5 couplings, 09 series

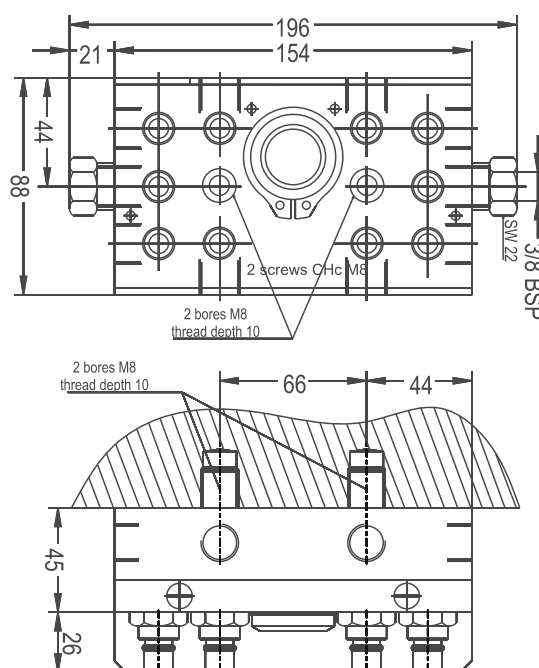


REF	D	Position
MUF 095510	Ø10	Injection machine side
MUF 095512	Ø12	Injection machine side

REF	D	Position
MUF 095538	BSP 3/8"	Injection machine side

MUM

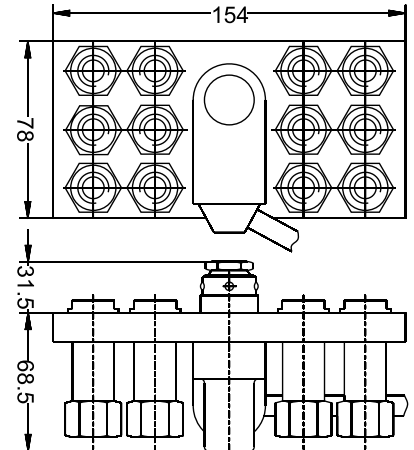
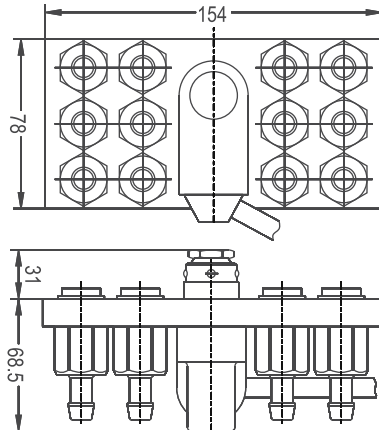
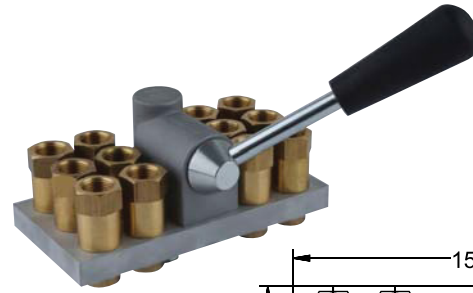
Mold plate for 5 + 5 couplings, 09 series



REF	Position
MUM 0955	Mold Side This reference includes the couplings shown in the picture (MUC0938MS)

Multi-coupling system 6 + 6 couplings, 09 series

MUF

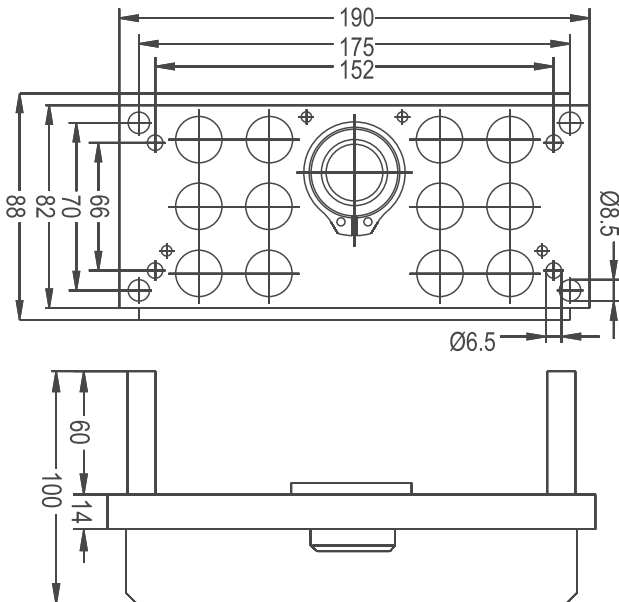


REF	D	Position
<b>MUF 096610</b>	Ø10	Injection machine side
<b>MUF 096612</b>	Ø12	Injection machine side

REF	D	Position
<b>MUF 096638</b>	BSP 3/8"	Injection machine side

Mold plate for 6 + 6 couplings, 09 series

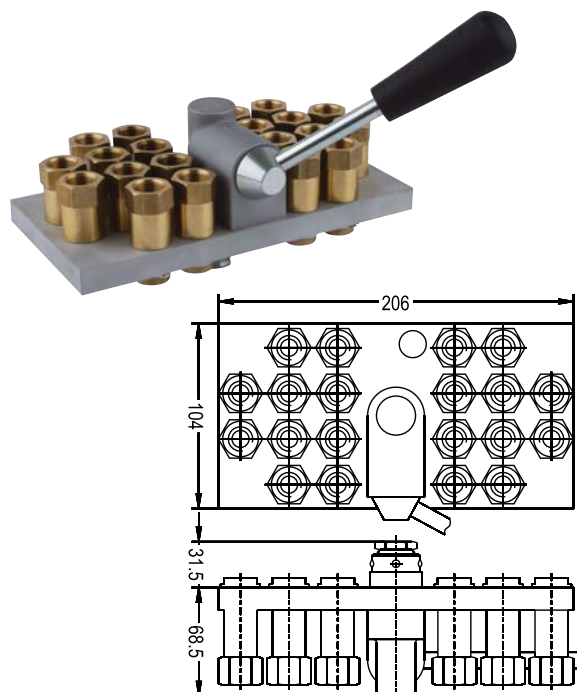
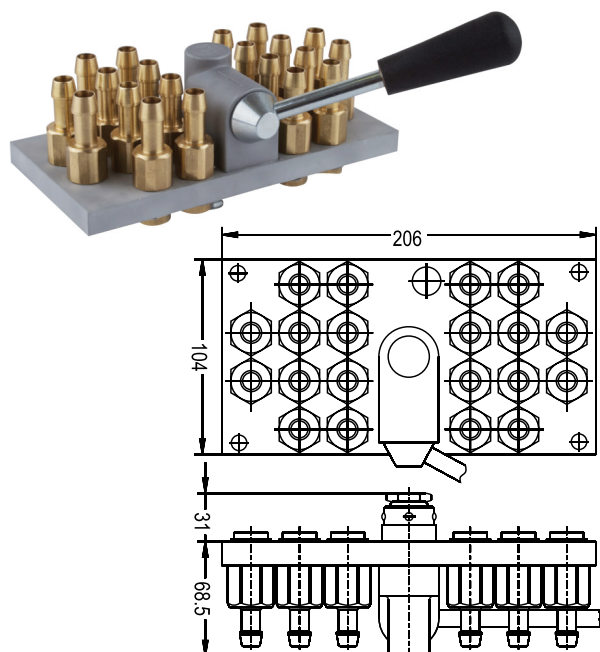
MUM



REF	Position
<b>MUM 0966</b>	Mold side

MUF

Multi-coupling system 10 + 10 couplings, 09 series

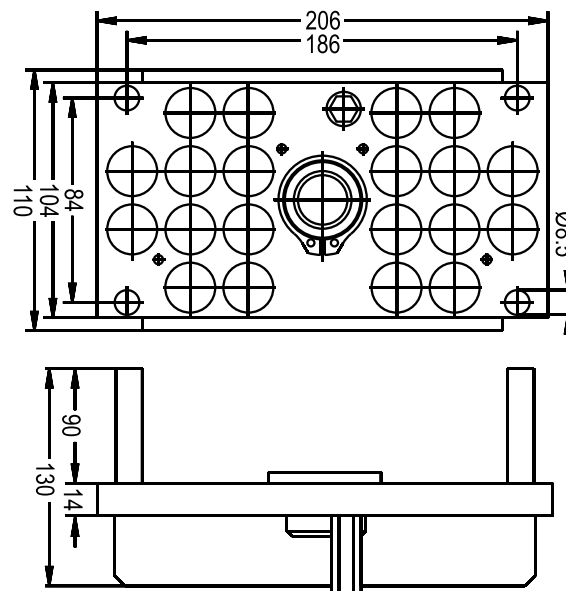


REF	D	Position
MUF 091010	Ø10	Injection machine side
MUF 091012	Ø12	Injection machine side

REF	D	Position
MUF 091038	BSP 3/8"	Injection machine side

MUM

Mold plate for 10 + 10 couplings, 09 series



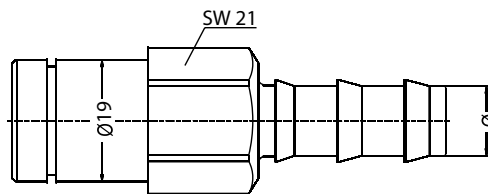
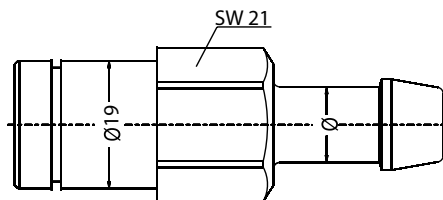
REF	Position
MUM 0910	Mold side

Couplings for Mutli-Couplings, 09 series

MUC

Hose Tail Shut-off Plug

Push-to-Lock Hose Tail Shut-off Plug

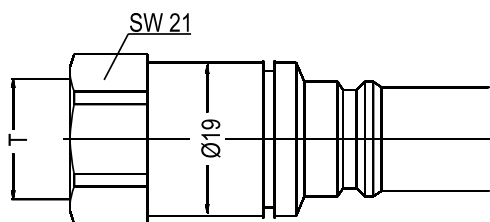
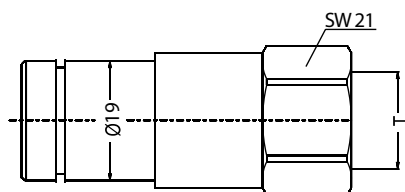


REF	D	Position
<b>MUC 0910 IS</b>	Ø 10	Injection machine side (for MUF plate)
<b>MUC 0912 IS</b>	Ø 12	Injection machine side (for MUF plate)

REF	D	Position
<b>MUC 0910 ISPL</b>	Ø 10	Injection machine side (for MUF plate)
<b>MUC 0913 ISPL</b>	Ø 13	Injection machine side (for MUF plate)

Female Threaded Shut-off Plug

Female Threaded Shut-off Plug



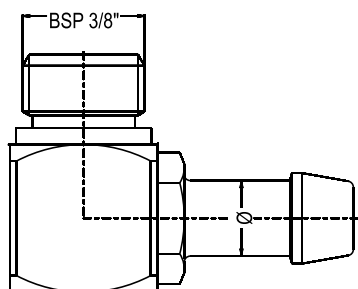
REF	D	Position
<b>MUC 0938 IS</b>	BSP 3/8"	Injection machine side (for MUF plate)

REF	T
<b>MUC 0938MS</b>	BSP 3/8" to be installed on MUM plate

## MUC

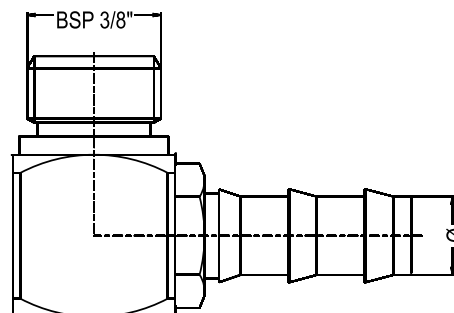
Couplings for Mutli-Couplings, 09 series

### 90° Angle Adapter



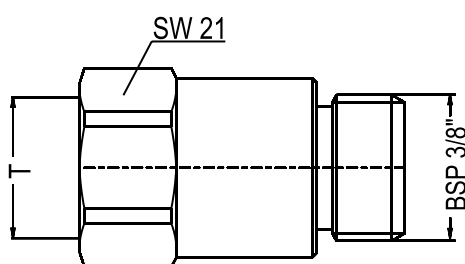
REF	T
<b>MUC 0910 EBMS</b>	Ø10 (to be installed on MUC0938MS)
<b>MUC 0912 EBMS</b>	Ø12 (to be installed on MUC0938MS)

### 90° Angle Adapter Push-to-Lock



REF	T
<b>MUC 0910 EBMPL</b>	Ø10 (to be installed on MUC0938MS)
<b>MUC 0912 EBMPL</b>	Ø12 (to be installed on MUC0938MS)

### Extension



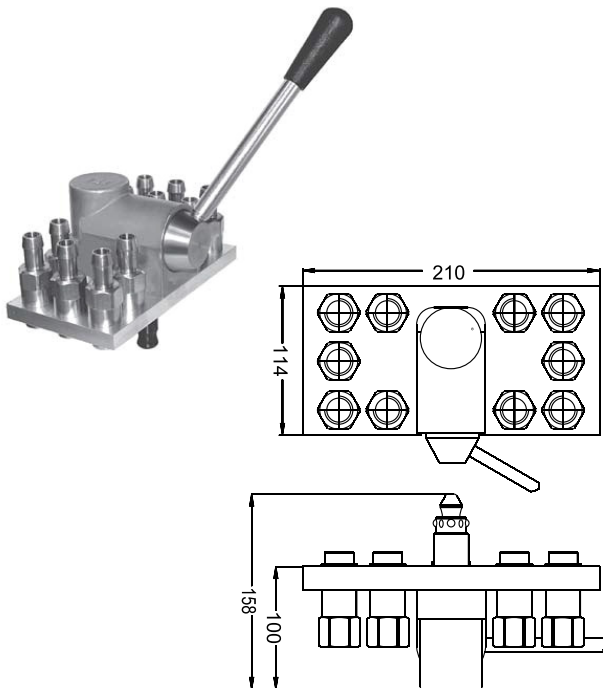
REF	Female	Male
<b>MUC 09EXTMS</b>	BSP 3/8"	BSP 3/8" to be installed on MUC0938MS

**How to Order: see page 10**

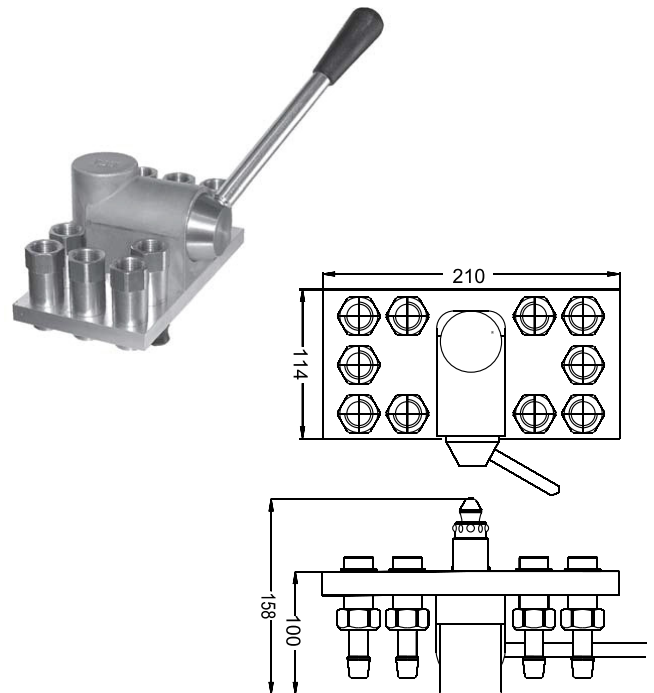


## Multi-coupling system 5 + 5 couplings, 12 series

MUF



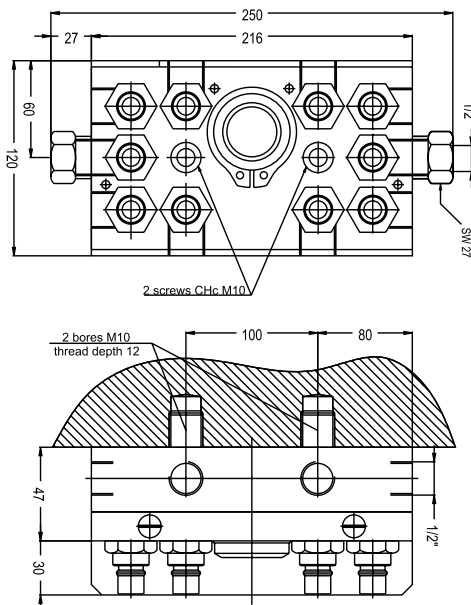
REF	D	Position
MUF 12SS10	Ø10	Injection machine side
MUF 12SS12	Ø12	Injection machine side



REF	D	Position
MUF 12SS38	BSP 1/2"	Injection machine side

## Mold plate for 5 + 5 couplings, 12 series

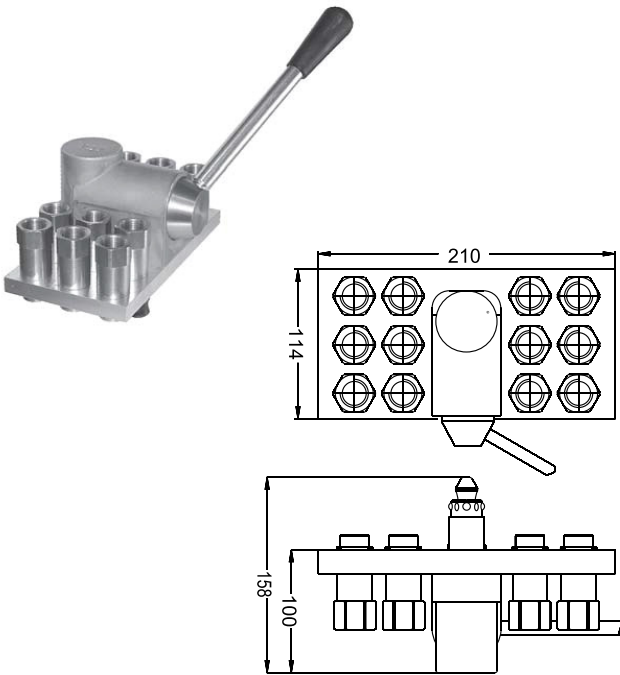
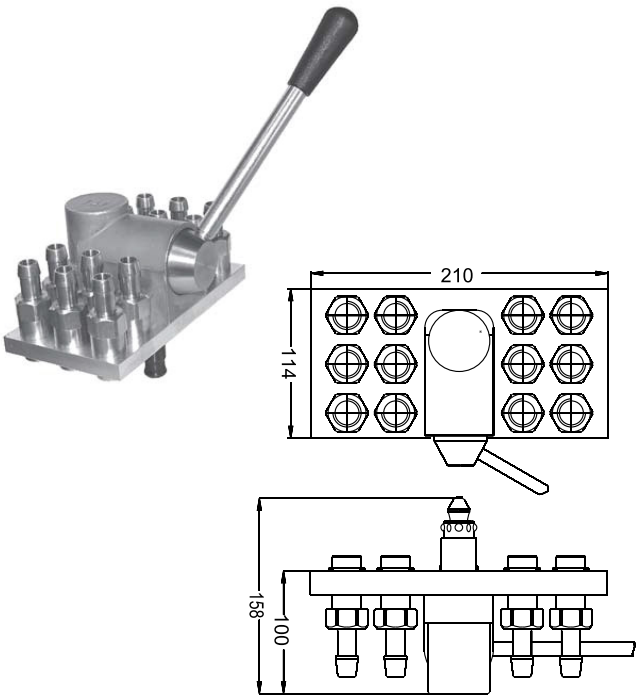
MUM



REF	
MUM 1255	Mold Side This reference includes the couplings shown in the picture (MUC0938MS)

MUF

Multi-coupling system 6 + 6 couplings, 12 series

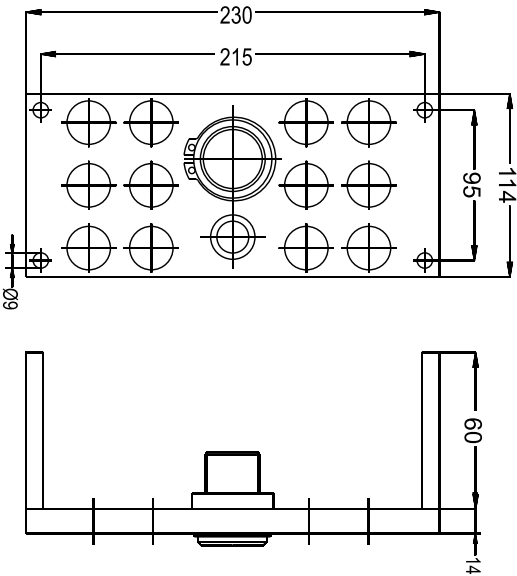


REF	D	Position
MUF 126610	Ø13	Injection machine side
MUF 126612	Ø16	Injection machine side

REF	D	Position
MUF 126638	BSP 1/2"	Injection machine side

MUM

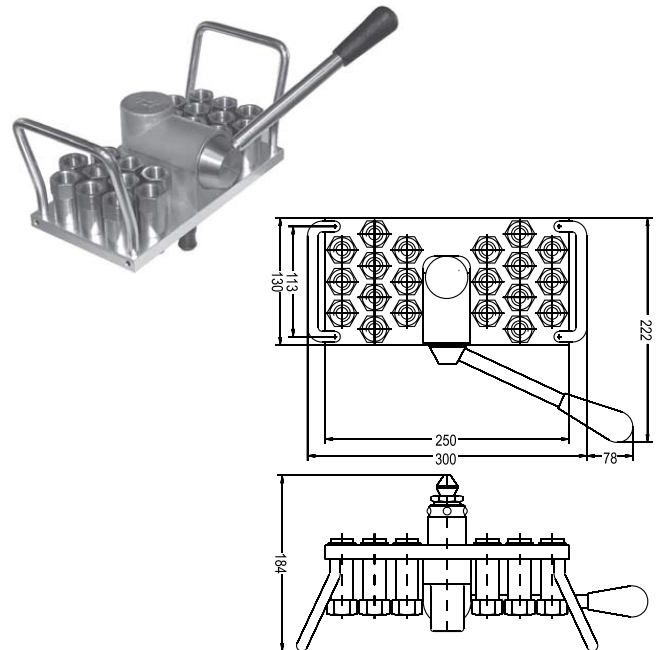
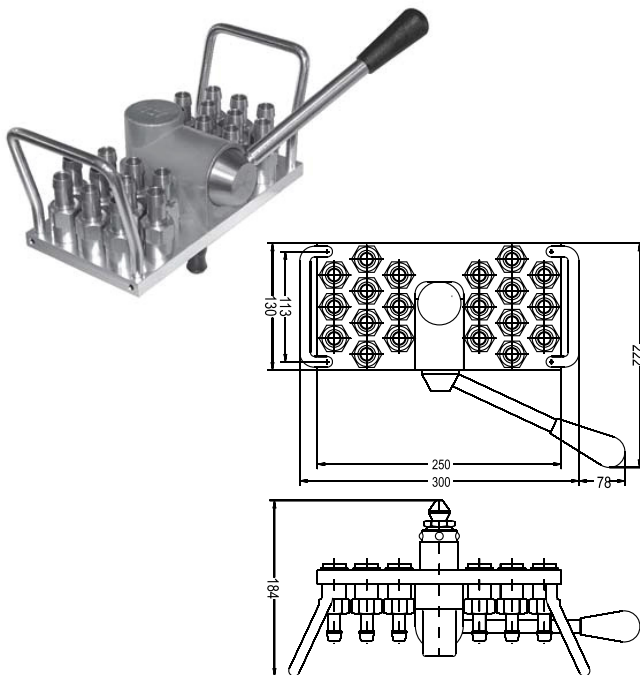
Mold plate for 6 + 6 couplings, 12 series



REF	Position
MUM 1266	Mold side

Multi-coupling system 5 + 5 couplings, 12 series

MUF

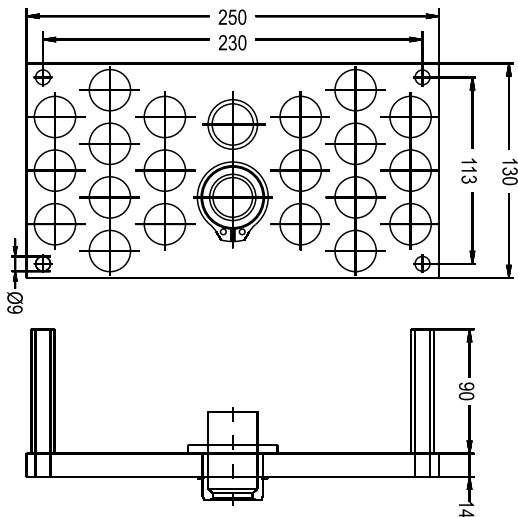


REF	D	Position
MUF 121010	Ø13	Injection machine side
MUF 121012	Ø16	Injection machine side

REF	D	Position
MUF 121038	BSP 1/2"	Injection machine side

Mold plate for 5 + 5 couplings, 12 series

MUM

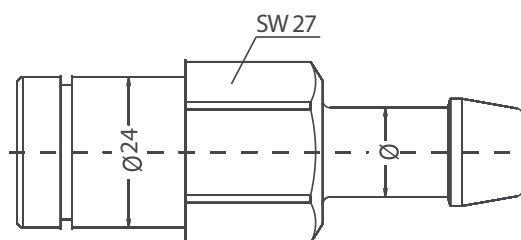


REF	Position
MUM1210	Mold side

MUC

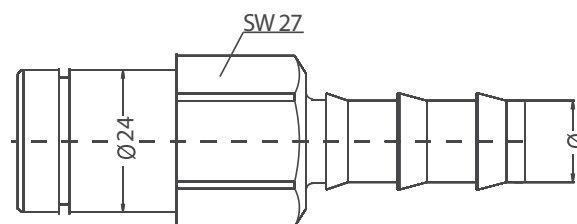
Couplings for Multi-Coupling, 12 series

Hose Tail Shut-off Plug



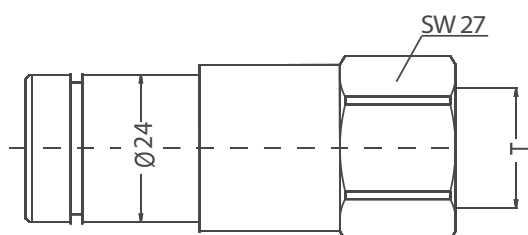
REF	D	Position
<b>MUC 1213 IS</b>	Ø13	Injection machine side (for MUF plate)
<b>MUC 1216 IS</b>	Ø16	Injection machine side (for MUF plate)

Push-to-Lock Hose Tail Shut-off Plug



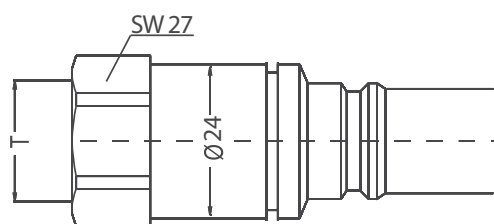
REF	D	Position
<b>MUC 1213 ISPL</b>	Ø16	Injection machine side (for MUF plate)
<b>MUC 1216 ISPL</b>	Ø13	Injection machine side (for MUF plate)

Female Threaded Shut-off Plug



REF	D	Position
<b>MUC 121215</b>	BSP 1/2"	Injection machine side (for MUF plate)

Female Threaded Shut-off Plug



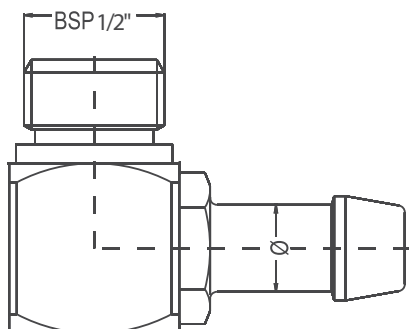
REF	T
<b>MUC 1238 MS</b>	BSP 1/2" for MUM plate

How to Order: see page 10

## Couplings for Multi-Coupling, 12 series

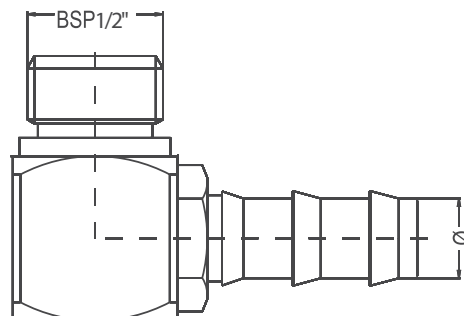
MUC

### 90° Angle Adapter



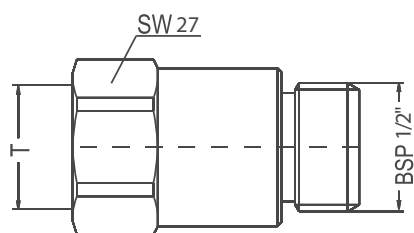
REF	T
<b>MUC 1213 EBMS</b>	Ø13
<b>MUC 1216 EBMS</b>	Ø16 to be installed on MUC0938MS

### 90° Angle Adapter Push-to-Lock



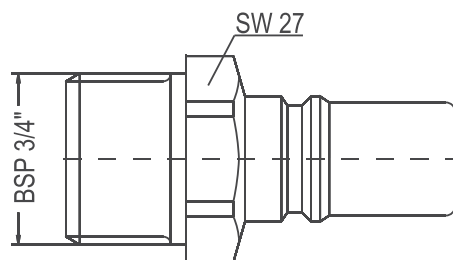
REF	T
<b>MUC 1213 EBMSPL</b>	Ø13
<b>MUC 1216 EBMSPL</b>	Ø16 to be installed on MUC0938MS

### Extension



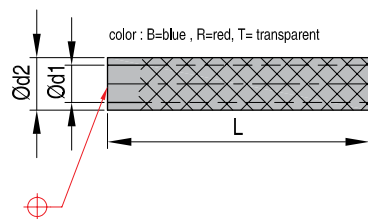
REF	Female	Male
<b>MUC 12 EXTMS</b>	BSP 1/2"	BSP 1/2" to be installed on MUC0938MS

### Male Threaded Shut-off Plug



REF	T
<b>MUC 12 CVMS</b>	BSP 3/4" to be installed on MUM1255

## GS 1090

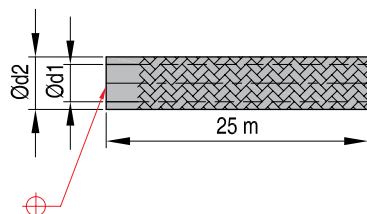


### Hoses

Mat.: Nylon reinforced  
R\* = bending radius

REF L	d1	d2	Pmax. 20°C	Pmax. 40°C	Pmax. 60°C	R*	L
<b>GS10906063</b>	6	12	22bar	16bar	8bar	R min=36 mm	25
<b>GS10908083</b>	8	13	20bar	14bar	7bar	R min=54 mm	50
<b>GS10909103B</b>	10	15	20bar	14bar	7bar	R min=74 mm	25
<b>GS10909103R</b>							
<b>GS1090131245B</b>	12,5	18	18bar	12bar	6bar	R min=90 mm	25
<b>GS1090131245R</b>							

## VM 200

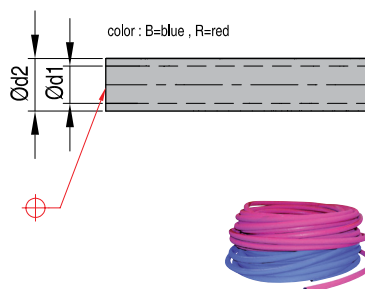


### Hoses (not for vacuum)

Mat.: Viton  
R\* = bending radius  
Not suited for use with oil!

REF	d1	d2	Pmax.	T (°C)	R*
<b>VM20009</b>	9	13,5	20bar	200	R min=50 mm
<b>VM20013</b>	13	18,0	20bar	200	R min=60 mm

## PTLH



### "Push-to-Lock" Hoses

Mat.: Mixture of synthetic elastomers, black smooth  
R\* = bending radius

REF	d1	d2	Pmax.	T (°C)	Info	R*
<b>PTLH10R</b>	3/8"	16	20bar	-35->85	20m roll	R min=70 mm
<b>PTLH10B</b>						
<b>PTLH13R</b>	1/2"	19	20bar	-35->85	20m roll	R min=84 mm
<b>PTLH13B</b>						

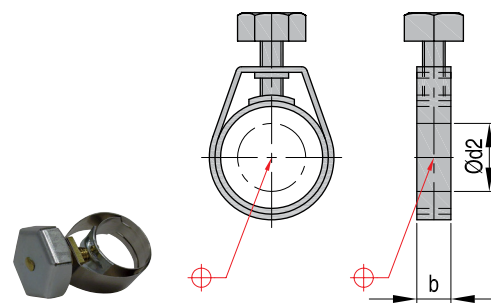


## Hose clamps

US 1600

Mat.: St (CrNi)

REF	d2	b
US16001	7-12	10
US16002	9-14	11
US16003	10-15	
US16004	12-17	
US16005	14-19	
US16006	16-21	
US16007	17-22	
US16008	20-25	

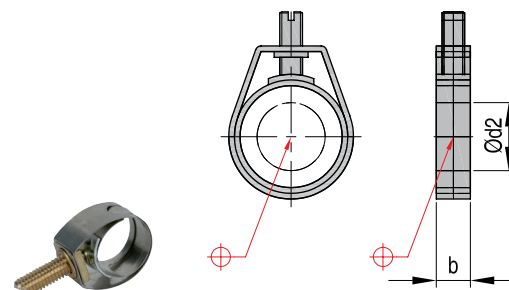


## Hose clamps

US 1650

Mat.: St (CrNi)

REF	d2	b
US16501	7-12	10
US16502	9-14	11
US16503	10-15	
US16504	12-17	
US16505	14-19	
US16506	16-21	
US16507	17-22	
US16508	20-25	

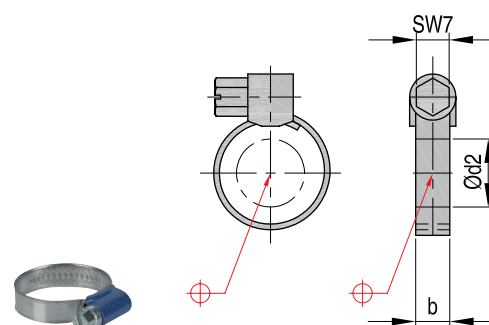


## Hose clamps

US 1700

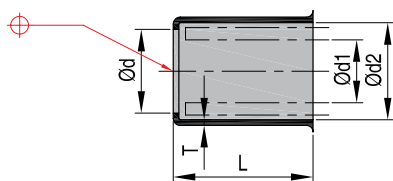
Mat.: St DIN 3017

REF	d2	b
US17001	8-12	9
US17002	10-16	
US17003	12-20	
US17004	16-25	
US17005	20-32	



MH 1

Press-fit assembly sleeves

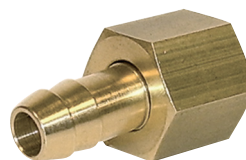
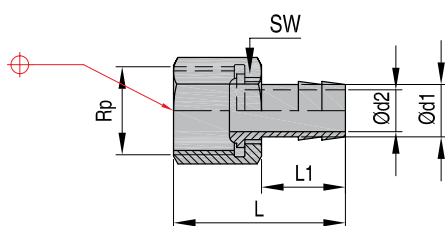


REF	d1	d2	d	L	T
MH109155	9	15,5	12	20	0,8
MH113195	13	19,0	14	26	0,9
MH11322	13	23,0	17	32	0,9

ST 19

2-piece hose nipple for MH1

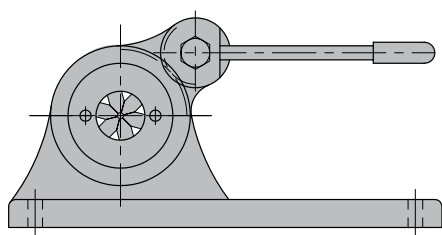
Mat.: Brass



REF	Rp	d1	d2	L	L1	SW
ST1909M141-5	M14x1,5	9	6	34,5	19	17
ST1909R1/4	1/4" BSP					
ST1913M161-5	M16x1,5	13	9	41,0	27	22
ST1913R3/8	3/8" BSP					

SM 1

Hose assembly tool



REF
SM1

## GENERAL CONDITIONS OF SALE DME EUROPE

### 1. CONCLUSION OF CONTRACT - APPLICATION

The contract is validly entered into and the order is accepted after written confirmation by seller. These sales conditions apply to the exclusion of any other terms or conditions, unless expressly accepted in writing beforehand by the vendor.

Seller has 30 (thirty) days since the reception of the order to accept or to refuse it. During this period, buyer shall not withdraw his order.

Absence of any written confirmation of the order shall only be interpreted as being an implicit acceptance in case of performance of the order by seller.

### 2. PAYMENT

Unless otherwise agreed in writing, invoices are payable in the stated currency within 30 (thirty) days after invoice date to the bank designated by seller. Transfer charges are for account of buyer.

If buyer does not pay within this term, seller shall automatically have ipso jure and without any prior formal notice, the right to charge legal interest plus 2 % from due date of the invoice. Moreover, in case of late payment, a fixed indemnity corresponding to 10 % of the payable amount shall automatically be due from the first day following the due date, without prejudice to seller's right to prove higher damage and ask for corresponding indemnity. Should payment be in foreign currency, seller has the right to adapt the foreign currency in case of depreciation of this foreign currency in regard of the euro.

Should payment of the delivered goods be in instalments, the non-payment of one of the instalments gives seller the right to terminate the contract. The payments, which were done until then, shall remain property of seller as indemnity, without prejudice to the right to claim further damages or to the right to require the performance of the contract.

Payment of advance shall not give buyer the right to terminate the contract upon reimbursement of the paid advance. If payment is done by bill of exchange or check, payment is deemed satisfied only when the bill of exchange or the check is honoured.

Place of payment is always Mechelen even if payment is done with bill of exchange.

### 3. RETENTION OF TITLE

Delivered goods remain property of seller until full payment has been received by seller. The sale of an unpaid item by buyer to a third party results in automatic assignment of the debt due by the third party to buyer, inclusively the retention of title, to seller. Seller has then the authority to take any necessary means in order to validly assign towards the third party. Seller may retake unpaid goods at any time and he may inform any client and/or any subcontractor of buyer about the fact that seller is and remains the only owner of the concerned goods until full payment.

The purchaser undertakes to carefully keep the goods that have not been paid for, and undertakes not to pledge them or use them in any other way as a guarantee or security. The purchaser shall inform third parties who may apply any security rights over his assets (such as, but not limited to, the lessor of the premises occupied by the purchaser) that the products are and shall remain the property of the vendor until full payment of all sums owed by the purchaser to the vendor, and in the event of an attachment or other measures taken by third parties that apply to products for which full payment has not yet been made the purchaser undertakes to immediately inform the vendor of this to enable him to apply his rights.

### 4. RISKS

Notwithstanding the preceding provisions, the risk transfers to buyer as soon as he has the goods at his disposal.

### 5. DISPATCHING OF INSIGNIFICANT VALUE

Each dispatch of less than € 50 will be increased with costs of payments and may, at seller's option, be sent cash on delivery (COD).

### 6. PRICE OFFERS AND PRICE LISTS

Price offers and price lists are without obligation and are subject to change without any previous notice.

Any information released by seller is delivered in good faith and seller shall not be responsible for the choice of material and goods.

### 7. PRICE AND DISPATCHING

All prices are ex works. Transportation, duties and taxes for account of buyer, unless seller's previous and express written specification to the contrary. Seller shall send goods by the fastest and most economic way at the risks of buyer. Goods may be insured by seller at buyer's option, the insurance premiums are for buyer. Seller is not responsible for the choice of packing.

### 8. DELIVERY

Date of delivery is the date when the goods are ready for inspection at the indicated place. Place of origin is Mechelen, Belgium, or any other place indicated by seller. Seller is not responsible for any late delivery, except those delays due to his own fault or gross negligence.

### 9. RETURNING OF GOODS

No goods can be returned without seller's previous, express and written consent. If buyer commits an error in ordering, the retaking of goods is possible only for inventory standard items. Goods must be returned within 15 (fifteen) days after invoice date and all goods must be in original conditions; all costs of transport are for buyer, as well as insurance and repacking costs. Special-order goods, marked or used items are non-returnable.

### 10. DEFECTS

Seller warrants defects in material and/or workmanship. Warranty is limited to the replacement or repair, at seller's option, of any merchandise found defective during 1 month. This warranty does not include defects due to buyer's fault or to abnormal use, bad maintenance, imperfect installation, buyer's inadequate repair, unforeseeable circumstances or in case changes were brought to material without previous and express written approval of seller.

Notice of conspicuous defects must be given to seller by registered letter sent within 10 (ten) working days following date of delivery.

Notice of hidden defects must be given to seller by registered letter within 10 (ten) working days after date of discovery, and in any case, within a 10-month term following date of delivery.

Seller is not responsible for any damage and in particular salary and material costs, losses, loss of profit or loss of a chance incurred by buyer, unless it is demonstrated that defect is due to seller's gross or intentional fault. If seller is responsible for defect, seller has the right either to terminate the contract and to pay back all the invoiced prices or to replace the delivered product within a reasonable term. If goods for repair must be transported, costs and risks of this transport are for buyer.

In case seller is responsible for any damage, this will be limited to the foreseeable damage with a maximum amount corresponding to the amount of the product's invoiced price.

Should a third party lodge a claim against seller to obtain payment of an indemnity for a damage for which seller is not responsible in accordance with the present conditions or for a higher amount than the one seller is responsible for, buyer will warrant seller against those claims.

### 11. DESCRIPTION

Only product descriptions used in seller's latest literature and correspondence with buyer, are binding for description of goods.

Buyer is responsible for using items in conformity with all regulations, including but not limited to, the safety regulations in force at the place of use.

### 12. SPECIFIC ORDERS

For the performance of a special work, the project signed by buyer is binding to the extent it has been accepted by seller.

For the performance of such work, special conditions may be required. In case of any inconsistency between general conditions and special conditions, the special conditions shall apply. Should special conditions be unclear, they shall be interpreted in light of the general conditions.

### 13. ACT OF GOD

Seller shall not pay any damage for non-performance or late performance of his undertakings due to Act of God. Act of God includes in particular and without being limited thereto, strike, lock-out, and the non-performance by seller's suppliers of their undertakings.

### 14. VALIDITY AND INDIVIDUAL CLAUSES

If one or more provisions of these present general conditions are held to be invalid, the remaining provisions will continue to be valid and enforceable, and parties will agree upon other provisions having an economic effect that corresponds closest to the economic effect of the invalid provision(s).

### 15. WAIVER

In case seller does not exercise one of his rights in accordance with the present conditions, this shall not be interpreted as a waiver of these rights.

### 16. APPLICABLE LAW – COMPETENT COURTS

This sales contract will be governed by Belgian law. The competent court is the Commercial Court of Mechelen, without prejudice to seller's right to introduce the case before another competent court.

**AT**

P: 0800 301 060  
F: 0800 401 020  
[dme\\_oesterreich@milacron.com](mailto:dme_oesterreich@milacron.com)

**DE**

P: 0800 664 82 50 | +49 (0) 2351 437 0  
F: 0800 664 82 51 | +49 (0) 2351 437 220  
[dme\\_normalien@milacron.com](mailto:dme_normalien@milacron.com)

**IT**

P: 800 089 734  
F: 800 089 735  
[dme\\_italy@milacron.com](mailto:dme_italy@milacron.com)

**SK**

P: 0800 142 451 | +420 572 151 754  
F: 0800 142 450 | +420 571 611 996  
[dme\\_cz@milacron.com](mailto:dme_cz@milacron.com)

**BE**

P: +32 (0) 15 28 87 30  
F: +32 (0) 15 40 51 17  
[dme\\_benelux@milacron.com](mailto:dme_benelux@milacron.com)

**ES**

P: 900 900 342  
F: 900 900 343  
[dme\\_iberia@milacron.com](mailto:dme_iberia@milacron.com)

**NL**

P: +31 (0) 20 654 5571  
F: +31 (0) 20 654 5572  
[dme\\_benelux@milacron.com](mailto:dme_benelux@milacron.com)

**UK**

P: +44 2071 3300 37  
F: +44 2071 3300 36  
[dme\\_uk@milacron.com](mailto:dme_uk@milacron.com)

**CH**

P: +41 0848 567 364  
F: +41 0848 567 365  
[dme\\_schweiz@milacron.com](mailto:dme_schweiz@milacron.com)

**FR**

P: +33 1 49 93 92 23  
F: +33 1 49 93 92 22  
[dme\\_france@milacron.com](mailto:dme_france@milacron.com)

**PL**

P: +800 331 1312 | +32 15 21 50 92  
F: +800 331 1313 | +32 15 40 51 92  
[dme\\_polska@milacron.com](mailto:dme_polska@milacron.com)

**Other Countries**

P: +32 15 28 87 30  
F: +32 15 40 51 17  
[dme\\_export@milacron.com](mailto:dme_export@milacron.com)

**CZ**

P: 800 142 451 | +420 572 151 754  
F: 800 142 450 | +420 571 611 996  
[dme\\_cz@milacron.com](mailto:dme_cz@milacron.com)

**HU**

P: 0680 205 003 | +32 15 28 87 30  
F: +32 15 40 51 17  
[dme\\_hungary@milacron.com](mailto:dme_hungary@milacron.com)

**PT**

P: 800 207 900  
F: 800 207 901  
[dme\\_iberia@milacron.com](mailto:dme_iberia@milacron.com)

**eSTORE**  
[estore.milacron.com](http://estore.milacron.com)

**UNILOY**

**Mold Masters**

**DME**

**CIMCOOL**

**TIRAD**

**FERROMATIK**

[www.dmeeu.com](http://www.dmeeu.com)

**DME**

[www.milacron.com](http://www.milacron.com)