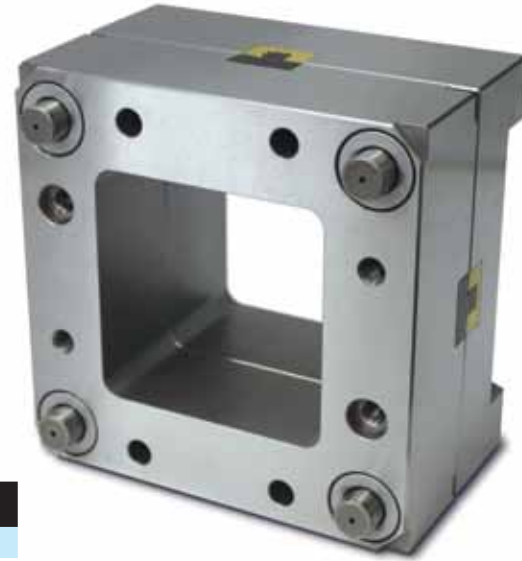


# DME Edge Pre-Pocketed Mold Bases

## STANDARD WITH THRU POCKETS AND TOP INTERLOCKS

Available in the Most Popular Mold Base Sizes



### 7.875 x 7.875

ITEM NUMBER	THRU POCKET SIZE	INTERLOCKS INSTALLED
EDA0808-13-13-3-PT	4.500 X 4.500 Pocket Tolerance +/- .001	(4) BGT1250
EDA0808-17-17-3-PT		
EDA0808-23-23-3-PT		

W	L	A	B	C	S	H
7.875	7.875	1.375	1.375	2.500	0.813	8.875
7.875	7.875	1.875	1.875	2.500	0.813	9.875
7.875	7.875	2.375	2.375	3.000	1.313	11.375

EB	ER	P	SU	TCP	RP0s	RPx	RPy	RPg	LPg
1.000	0.500	1.250	1.375	1.375	3.188	3.313	1.500	0.500	0.750

### 9.875 x 8.000

ITEM NUMBER	THRU POCKET SIZE	INTERLOCKS INSTALLED
EDA1008-13-13-3-PT	6.000 X 5.000 Pocket Tolerance +/- .001	(4) BGT1250
EDA1008-17-17-3-PT		
EDA1008-23-23-3-PT		

W	L	A	B	C	S	H
9.875	8	1.375	1.375	2.500	0.813	9.375
9.875	8	1.875	1.875	3.500	1.813	11.375
9.875	8	2.375	2.375	3.500	1.813	12.375

EB	ER	P	SU	TCP	RP0s	RPx	RPy	RPg	LPg
1.000	0.500	1.438	1.875	1.375	3.125	3.250	2.250	0.625	0.750

### 9.875 x 11.875

ITEM NUMBER	THRU POCKET SIZE	INTERLOCKS INSTALLED
EDA1012-13-13-3-PT	6.500 X 8.000 Pocket Tolerance +/- .001	(4) BGT1250
EDA1012-17-17-3-PT		
EDA1012-23-23-3-PT		

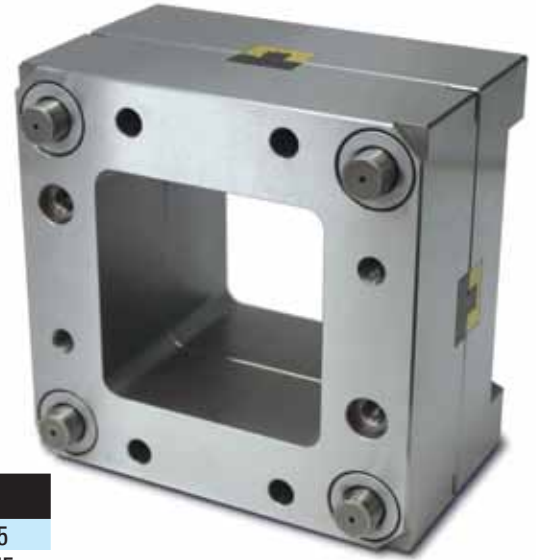
W	L	A	B	C	S	H
9.875	11.875	1.375	1.375	3.000	1.312	9.875
9.875	11.875	1.875	1.875	3.500	1.813	11.375
9.875	11.875	2.375	2.375	3.500	1.813	12.375

EB	ER	P	SU	TCP	RP0s	RPx	RPy	RPg	LPg
1.000	0.500	1.438	1.875	1.375	5.063	5.188	2.250	0.625	0.875

# DME Edge Pre-Pocketed Mold Bases

## STANDARD WITH THRU POCKETS AND TOP INTERLOCKS

Available in the Most Popular Mold Base Sizes



### 11.875 x 12.000

ITEM NUMBER	THRU POCKET SIZE	INTERLOCKS INSTALLED
EDA1212-13-13-3-PT	8.000 X 8.000 Pocket Tolerance +/- .001	(4) BGT1250
EDA1212-17-17-3-PT		
EDA1212-23-23-3-PT		

W	L	A	B	C	S	H
11.875	12.000	1.375	1.375	3.000	1.188	9.875
11.875	12.000	1.875	1.875	3.000	1.188	10.875
11.875	12.000	2.375	2.375	3.500	1.688	12.375

EB	ER	P	SU	TCP	RP0s	RPx	RPy	RPg	LPg
1.125	0.500	1.688	1.875	1.375	5.000	5.125	3.188	0.750	1.000

### 11.875 x 15.000

ITEM NUMBER	THRU POCKET SIZE	INTERLOCKS INSTALLED
EDA1215-13-13-3-PT	8.000 X 10.000 Pocket Tolerance +/- .001	(4) BGT1250
EDA1215-17-17-3-PT		
EDA1215-23-23-3-PT		

W	L	A	B	C	S	H
11.875	15.000	1.375	1.375	3.000	1.188	9.875
11.875	15.000	1.875	1.875	3.000	1.188	10.875
11.875	15.000	2.375	2.375	3.500	1.688	12.375

EB	ER	P	SU	TCP	RP0s	RPx	RPy	RPg	LPg
1.125	0.500	1.688	1.875	1.375	6.500	6.625	3.188	0.075	1.000

Variables for the Edge Series Mold Base with their definitions:

W = Width	EB = Ejector bar thickness
L = Length	ER = Ejector retainer thickness
TCP = Top clamp plate thickness	P = Housing riser thickness
A = A plate thickness	RPx = Return pin location on X axis (3 places)
B = B Plate thickness	RPy = Return pin location on Y axis (4 places)
SU = Support plate thickness	RP0s = Return pin offset on the X axis (1 place)
C = Height of the riser	RPg = Return pin diameter
S = Maximum stroke of the ejector bar	LPg = Leader pin diameter
H = Mold base height	