

D-M-E CounterView® Mold Counter

**Monitors mold activity
to maximize mold uptime**



Every step of the way

D-M-E CounterView 100-200 SERIES

D-M-E CounterView Mold Counter

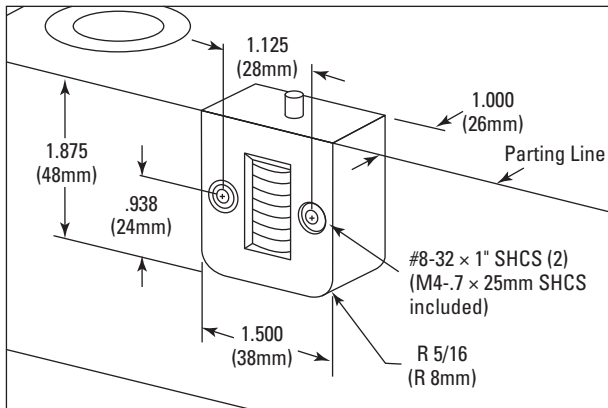
Accurately monitors mold operation, validates process monitoring data, and assists mold maintenance procedures.

With a maximum operating temperature of 250°F (121°C), this precise device uses a non-resettable, mechanical, 7-digit counter to record the number of times a mold closes. Easily mountable to accommodate changeovers for different mold insert heights, the unit's counting mechanism relies on a sensor that detects when the mold has closed. Each mold cycle triggers the counting mechanism to increase the count on the display.



Benefits

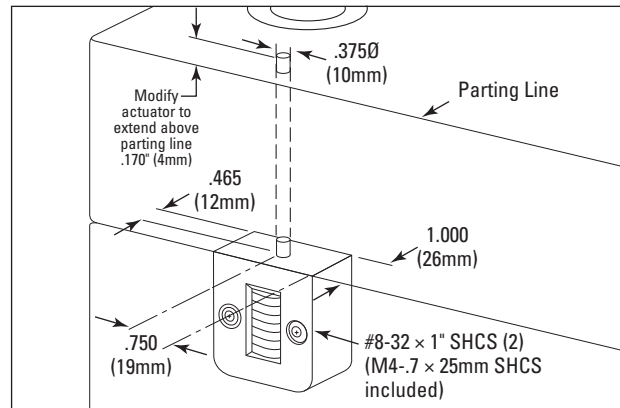
- Positively monitors mold activity
- Confirms process monitoring data
- Maximizes mold maintenance procedures
- Enables access to mold information online at <http://moldmonitor.com>
- Glass-filled nylon housing for rugged durability



Parting Line Mount

Parting line mount makes unit easily visible.

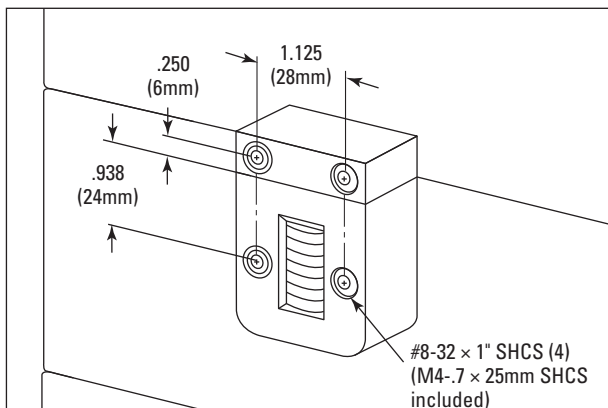
CVPL100D	Inch Standard
CVPL200D	Metric Standard



Internal Extension Mount

Machinable 8" (203mm) extension enables support plate or rail installation.

CVIN100D	Inch Standard
CVIN200D	Metric Standard



External Mount

Pocket machining not necessary. Designed specifically for retrofit applications.

CVEX100D	Inch Standard
CVEX200D	Metric Standard

Each CounterView has a unique serial number that allows users to view mold information online at moldmonitor.com.

CounterView is a registered trademark of Progressive Components.

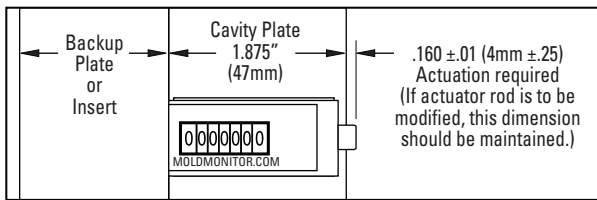
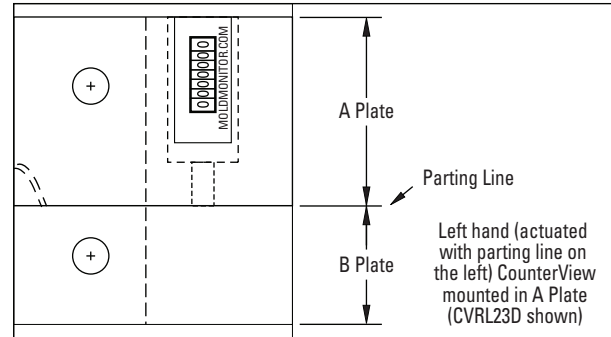
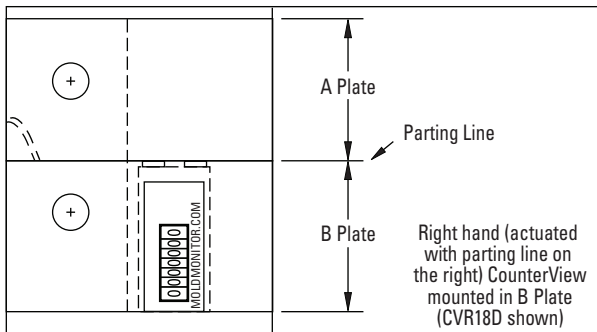
U.S.# 5,571,539

Others issued and pending

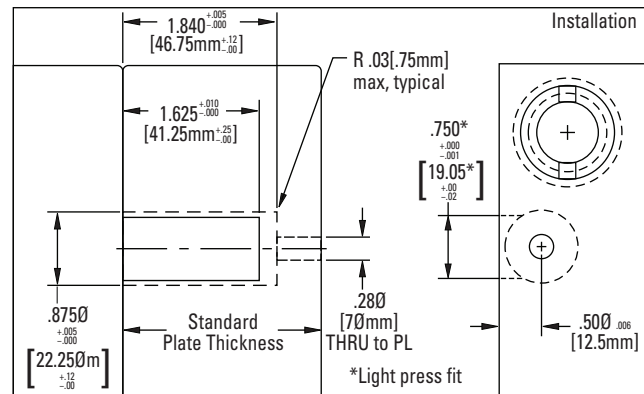
D-M-E CounterView R-SERIES

CounterView® (R-Series)

The CounterView accurately monitors mold operation, validates process monitoring data, and assists mold maintenance procedures. With a maximum operating temperature of 250°F (121°C), this precise unit has a non-resettable, mechanical, 7-digit counter and a glass-filled nylon housing for rugged durability.



The R-Series CounterView can be installed in the A or B plates with a minimum thickness of 1.875" (47mm). Larger plates utilize a threaded rod (included with each) that is pre-machined to the appropriate length for standard plate thicknesses to provide consistent actuation.



Parting Line at Left



Parting Line at Right



Inch Standard

ITEM NUMBER	NOMINAL PLATE THICKNESS
CVRL18D	1.875
CVRL23D	2.375
CVRL28D	2.875
CVRL33D	3.375
CVRL38D	3.875
CVRL43D	4.375
CVRL83D	8.375

Metric Standard

ITEM NUMBER	NOMINAL PLATE THICKNESS
CVRL56D	56
CVRL66D	66
CVRL76D	76
CVRL96D	96

Inch Standard

ITEM NUMBER	NOMINAL PLATE THICKNESS
CVR18D	1.875
CVR23D	2.375
CVR28D	2.875
CVR33D	3.375
CVR38D	3.875
CVR43D	4.375
CVR83D	8.375

Metric Standard

ITEM NUMBER	NOMINAL PLATE THICKNESS
CVR56D	56
CVR66D	66
CVR76D	76
CVR96D	96

Each R-Series CounterView includes the actuator. All except CVR18D and CVRL18D require attachment of the actuator rod to the threaded unit.

D-M-E COUNTERVIEW REPLACEMENT ACTUATOR RODS

Inch Standard

ITEM NUMBER	ROUND CV ROD LENGTH
RCV23	0.5"
RCV28	1.0"
RCV33	1.5"
RCV38	2.0"
RCV43	2.5"
RCV83	6.5"

Metric Standard

ITEM NUMBER	ROUND CV ROD LENGTH
RCV56	8.38mm
RCV66	18.39mm
RCV76	28.37mm
RCV96	48.38mm

D-M-E, an essential resource to customers worldwide, offers the industry's broadest range of market-leading products, a global logistics infrastructure that ensures speed and accuracy, and a support organization with unsurpassed knowledge and expertise that assists customers when and where they need it. A complete line of mold bases, quick-change mold systems, mold components, mold making and molding equipment supplies, hot runner systems, control systems, cold runner systems for elastomers, and technical services helps customers achieve success every step of the way.



World Headquarters
D-M-E Company
 29111 Stephenson Highway
 Madison Heights, MI 48071
800-626-6653 *toll-free tel*
248-398-6000 *tel*
888-808-4363 *toll-free fax*
www.dme.net *web*
sales@dme.net *e-mail*

D-M-E of Canada, Ltd.
 6210 Northwest Drive
 Mississauga, Ontario
 Canada L4V 1J6
800-387-6600 *toll-free tel*
905-677-6370 *tel*
800-461-9965 *toll-free fax*
dme_canada@dme.net *e-mail*

D-M-E Europe
 D-M-E Belgium C.V.B.A.
 Industriepark Noord
 B-2800 Mechelen
 Belgium
32-15-215011 *tel*
32-15-218235 *fax*
sales@dmeeu.com *e-mail*