

C

MUD Quick-Change Systems from D-M-E

MUD

Quick-Change™ Components for Mold Frames & Inserts



Customize MUD frames and insert molds with a full range of components

MUD® Quick-Change frames and companion insert mold series are available with a full range of components. These components permit tailoring MUD frames and insert molds to every injection molding machine up to 500 tons. This makes the cost-saving benefits and time-saving advantages of the Master Unit Die Concept available to virtually every mold maker and plastic molder in the industry.

The components included in this brochure include all of the standard parts installed in the MUD basic Quick-Change frames and companion insert molds. U, H and Double H frame components include sprue bushings, locating rings and guide posts. Components for T style and standard style insert molds include leader pins and bushings, ejector plates and ear plates.

MUD Quick-Change Components for Mold Frames and Inserts | Customize MUD Frames & Insert Molds

MUD

U.S. 800-626-6653 ■ www.dme.net
Canada 800-387-6600 ■ Europe 32-15-215011

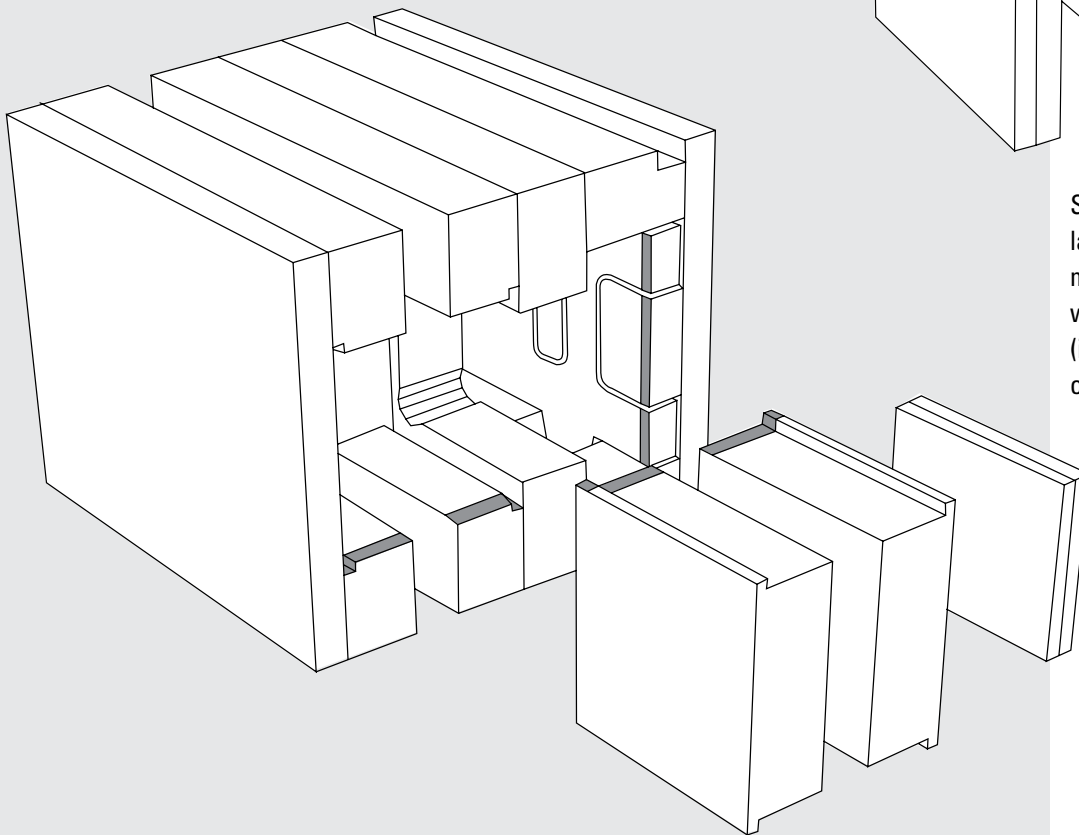
Quick-Change Components Frame & Insert Mold Tapered Leads

Easy alignment, faster mold changes with MUD tapered leads

D-M-E has an ongoing research and development program. One of the primary objectives of this program is to facilitate faster mold changes. MUD Quick-Change systems are predicated on making these mold changes as efficient as possible. One result of this program is the 5° tapered lead.

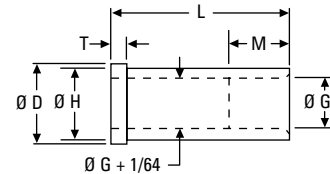
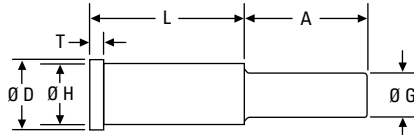
All MUD Quick-Change frame ear slots are now machined with these tapered leads. Seven-inch wide and larger companion insert molds are also machined with a tapered lead. The gray shading on the illustrations indicates the areas with this 5° tapered lead.

The result of this product improvement is easier alignment and faster installation of companion insert molds in MUD Quick-Change frames.



Seven-inch wide and larger companion insert molds are machined with a 5° tapered lead (indicated by gray shading on the illustrations).

Quick-Change Components Leader Pins, Bushings & Accessories



Shoulder Leader Pins

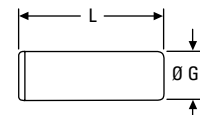
ITEM NO.	G ^{+0.000} / _{-0.005}	H ^{+0.005} / _{-0.000}	D ^{+0.00} / _{-0.10}	T ^{+0.00} / _{-0.03}	L ^{±.01}	A ^{±.01}
P2-585	.2495	.3750	.485	.125	.585	.500
P2-835	.2495	.3750	.485	.125	.835	.750
P2-1210	.2495	.3750	.485	.125	1.210	1.250
P2-1335	.2495	.3750	.485	.125	1.335	1.000
P2-1710	.2495	.3750	.485	.125	1.710	1.250
P2-2210	.2495	.3750	.485	.125	2.210	1.250
P3-585	.3750	.5005	.610	.125	.585	.750
P3-835	.3750	.5005	.610	.125	.835	.750
P3-1085	.3750	.5005	.610	.125	1.085	1.000
P3-1210	.3750	.5005	.610	.125	1.210	1.000
P3-1710-10	.3750	.5005	.610	.125	1.710	1.000
P3-1710-15	.3750	.5005	.610	.125	1.710	1.500
P3-2210	.3750	.5005	.610	.125	2.210	1.500
P3-2710	.3750	.5005	.610	.125	2.710	1.750
P5-585-6	.4990	.7510	.853	.187	.585	.625
P5-585-8	.4990	.7510	.853	.187	.585	.875
P5-835-6	.4990	.7510	.853	.187	.835	.625
P5-835-8	.4990	.7510	.853	.187	.835	.875
P5-1085	.4990	.7510	.853	.187	1.085	1.000
P5-1210	.4990	.7510	.853	.187	1.210	1.250
P5-1335	.4990	.7510	.853	.187	1.335	.750
P5-1710-12	.4990	.7510	.853	.187	1.710	1.250
P5-1710	.4990	.7510	.853	.187	1.710	1.750
P5-2210	.4990	.7510	.853	.187	2.210	1.750
P5-2710	.4990	.7510	.853	.187	2.710	1.750
P6-710	.6240	.8760	.985	.187	.710	.750
P6-1210-7	.6240	.8760	.985	.187	1.210	.750
P6-1210-12	.6240	.8760	.985	.187	1.210	1.250
P6-1710	.6240	.8760	.985	.187	1.710	1.250
P6-2210-12	.6240	.8760	.985	.187	2.210	1.250
P6-2210	.6240	.8760	.985	.187	2.210	1.750
P6-2710	.6240	.8760	.985	.187	2.710	1.750
P6-3210	.6240	.8760	.985	.187	3.210	1.750
P6-3710	.6240	.8760	.985	.187	3.710	1.750
P6-4210	.6240	.8760	.985	.187	4.210	2.500
P6-4710	.6240	.8760	.985	.187	4.710	2.500

Shoulder Bushings

ITEM NO.	G ^{+0.005} / _{-0.000}	H ^{+0.005} / _{-0.000}	D ^{+0.00} / _{-0.10}	T ^{+0.00} / _{-0.03}	L ^{±.01}	M ^{MIN}
B2-585	.2500	.3750	.485	.125	.585	—
B2-835	.2500	.3750	.485	.125	.835	.50
B2-1210	.2500	.3750	.485	.125	1.210	.50
B2-1335	.2500	.3750	.485	.125	1.335	.50
B2-1710	.2500	.3750	.485	.125	1.710	.50
B3-585	.3755	.5005	.610	.125	.585	—
B3-835	.3755	.5005	.610	.125	.835	.50
B3-1085	.3755	.5005	.610	.125	1.085	.50
B3-1210	.3755	.5005	.610	.125	1.210	.50
B3-1710	.3755	.5005	.610	.125	1.710	.50
B3-2210	.3755	.5005	.610	.125	2.210	.50
B3-2710	.3755	.5005	.610	.125	2.710	.50
B5-585	.5000	.7510	.853	.187	.585	—
B5-835	.5000	.7510	.853	.187	.835	—
B5-1085	.5000	.7510	.853	.187	1.085	.75
B5-1210	.5000	.7510	.853	.187	1.210	.75
B5-1335	.5000	.7510	.853	.187	1.335	.75
B5-1710	.5000	.7510	.853	.187	1.710	.75
B5-2210	.5000	.7510	.853	.187	2.210	.75
B5-2710	.5000	.7510	.853	.187	2.710	.75
B6-710	.6250	.8760	.985	.187	.710	—
B6-1210	.6250	.8760	.985	.187	1.210	.75
B6-1710	.6250	.8760	.985	.187	1.710	.75
B6-2210	.6250	.8760	.985	.187	2.210	.75
B6-2710	.6250	.8760	.985	.187	2.710	.75
B6-3210	.6250	.8760	.985	.187	3.210	.75
B6-3710	.6250	.8760	.985	.187	3.710	.75
B6-4210	.6250	.8760	.985	.187	4.210	.75
B6-4710	.6250	.8760	.985	.187	4.710	.75

Dowel Leader Pins *

ITEM NO.	G	L
P-25	0.250	1.25
P-37	0.375	1.50
P-50	0.500	1.50
P-62	0.625	2.00
P-75	0.750	2.00

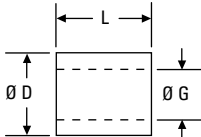


*Replacement leader pins for certain previously constructed insert molds.

MUD Quick-Change Components for Mold Frames & Inserts | Leader Pins, Bushings & Accessories

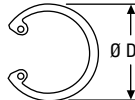


Quick-Change Components Components



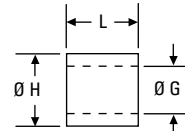
Spacers

ITEM NO.	G	D	L
SB2525	0.28	0.497	0.250
SB2550	0.28	0.497	0.500
SB3825	0.40	0.622	0.250
SB3850	0.40	0.622	0.500
SB3810	0.40	0.622	1.000
SB5025	0.53	0.863	0.250
SB5050	0.53	0.863	0.500
SB5010	0.53	0.863	1.000
SB6205	0.65	0.995	0.500
SB6210	0.65	0.995	1.000
SB6215	0.65	0.995	1.500



Snap Rings

ITEM NO.	PIN	D
MUD5000-50	Ø 0.250	0.55
MUD5000-62	Ø 0.375	0.69
MUD5000-86	Ø 0.500	0.96
MUD5000-100	Ø 0.625	1.11



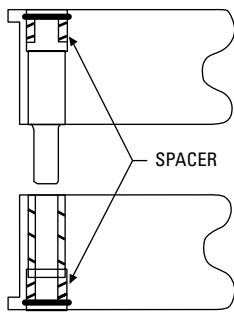
Straight Bushings*

ITEM NO.	G	H	L
MUD25-37	0.252	0.376	0.50
MUD37-50	0.377	0.501	0.50
MUD50-75	0.502	0.751	0.75
MUD62-87	0.627	0.876	1.00
MUD75-87	0.751	1.125	0.87
MUD75-13	0.751	1.125	1.38

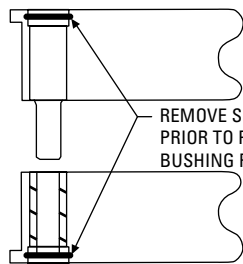
*Replacement bushings for certain previously constructed insert molds.



Shoulder Leader Pin and Bushing Assembly (see p. C 118)

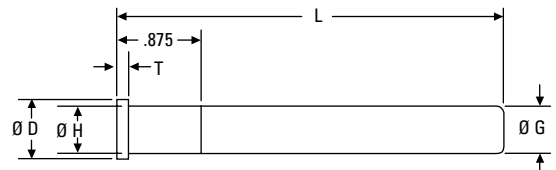


Shoulder leader pin and bushing **with** spacer



Shoulder leader pin and bushing **without** spacer

REMOVE SNAP RING
PRIOR TO PIN AND
BUSHING REMOVAL



Straight Leader Pins**

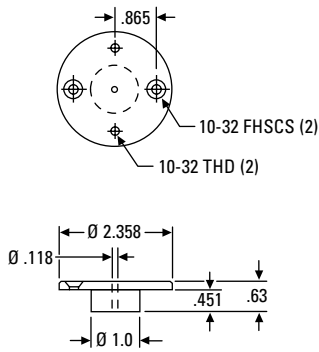
ITEM NO.	G	H	D	T	L
SP3-4000	0.374	0.3755	0.610	0.125	4.0
SP5-4000	0.499	0.5005	0.610	0.125	4.0
SP6-4000	0.624	0.6255	0.853	0.187	4.0
SP3-6000	0.374	0.3755	0.610	0.125	6.0
SP5-6000	0.499	0.5005	0.610	0.125	6.0
SP6-6000	0.624	0.6255	0.853	0.187	6.0

** Designed for stripper plate and three-plate molds.

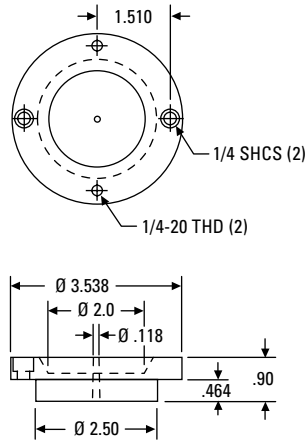


Quick-Change Components Sprue Bushings

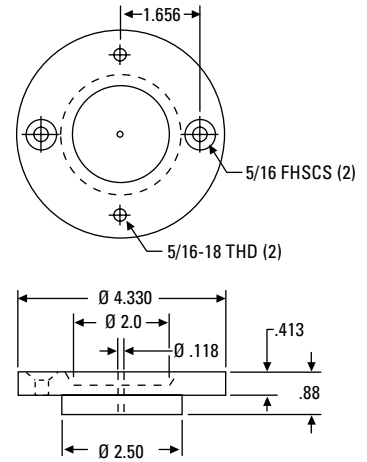
MUD Quick-Change Components for Mold Frames & Inserts | Sprue Bushings



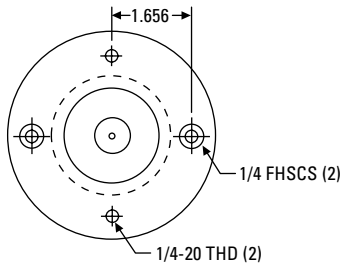
ITEM NO.
SB2310-63-001



ITEM NO.
SB3525-90-001

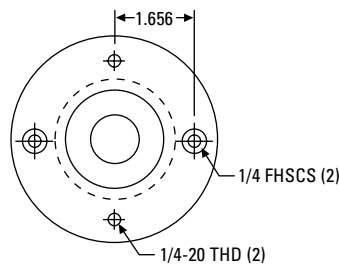


ITEM NO.
SB4325-88-001



ITEM NO.
SB2025-88

SB2025-88 sprue bushing supplied flat with 1/8" orifice or with 1/2" or 3/4" radius with 1/8", 5/32", 7/32" or 9/32" orifice.



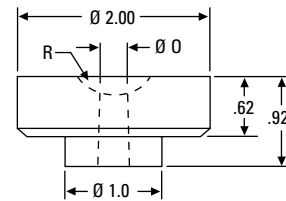
ITEM NO.
SB4325-60

SB4325-60 adapter ring is designed for frames having a 2-1/2" sprue opening to accept SB2010-92 sprue bushing.

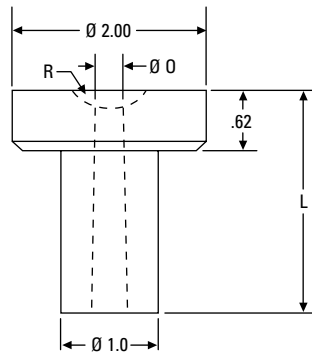
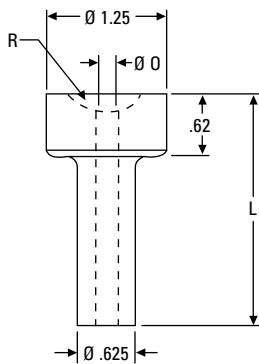
Ordering Information for Sprue Bushings

- Item number and description
- Orifice taper is 1° 11" per side





ITEM NO.
SB2010-92



Sprue Bushings

ITEM NO.	L
SB1262-19	1.90
SB1262-29	2.90

H Frame Sprue Bushings

ITEM NO.	L
SB2010-18	1.81
SB2010-23	2.31
SB2010-28	2.81
SB2010-33	3.31
SB2010-38	3.81
SB2010-43	4.31

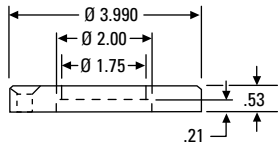
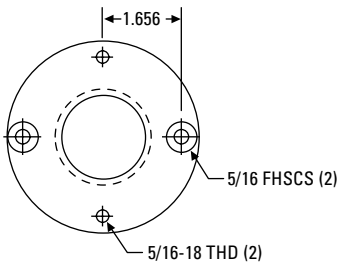
Ordering Information for Sprue Bushings

- Item number and description
- Specify "O" (orifice) available in 5/32", 7/32" and 9/32"
- Specify "R" (radius) available in 1/2" and 3/4"
- Taper is 1/2" per foot (included angle)



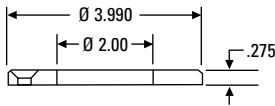
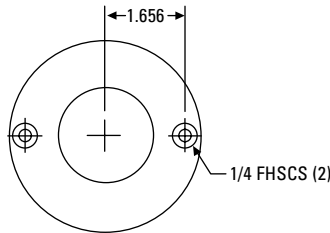
Quick-Change Components Top Locating Rings

MUD Quick-Change Components for Mold Frames & Inserts | Top Locating Rings



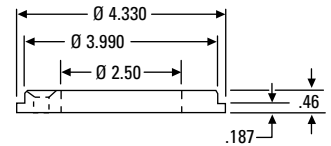
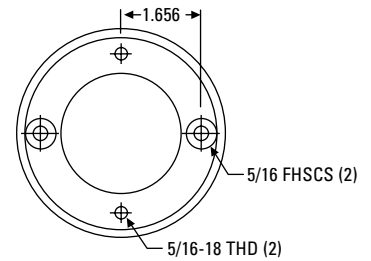
ITEM NO.

LR191R



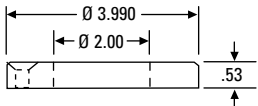
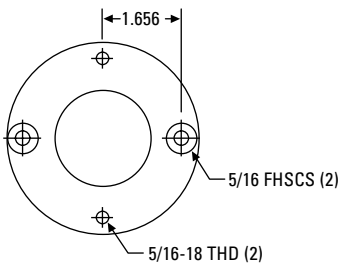
ITEM NO.

LR171



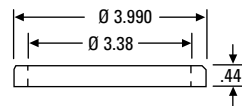
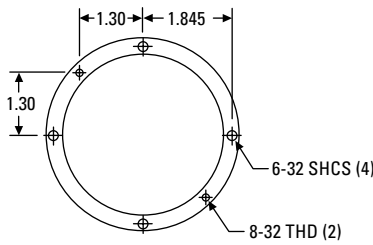
ITEM NO.

LR153



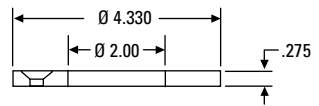
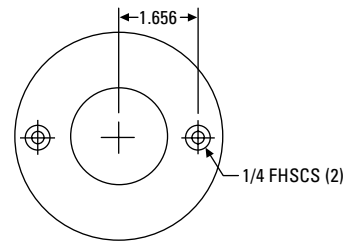
ITEM NO.

LR191



ITEM NO.

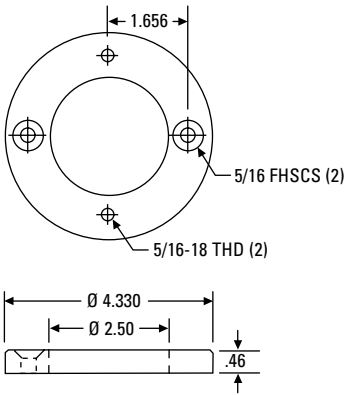
LR181



ITEM NO.

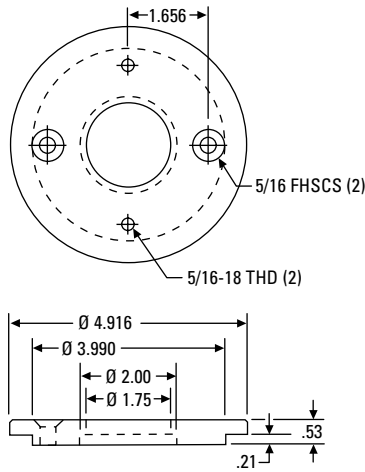
LR173





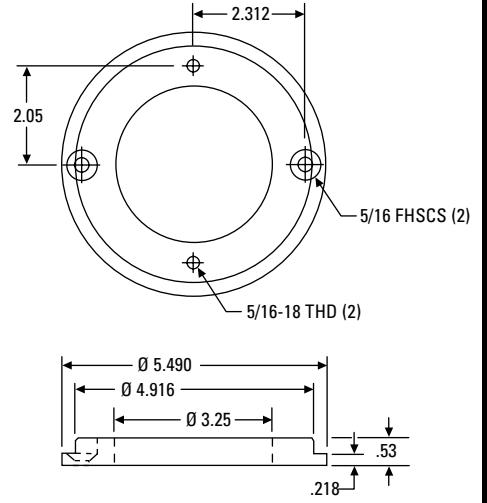
ITEM NO.

LR163



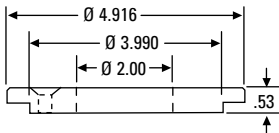
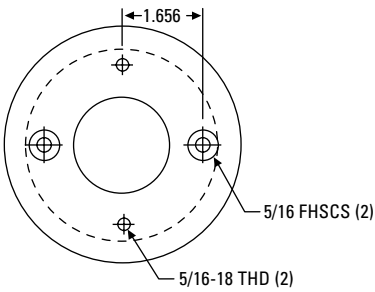
ITEM NO.

LR192R



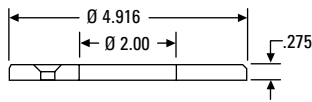
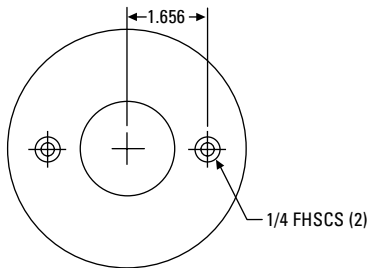
ITEM NO.

LR202



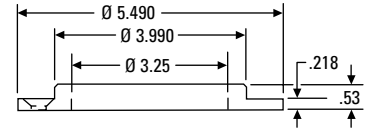
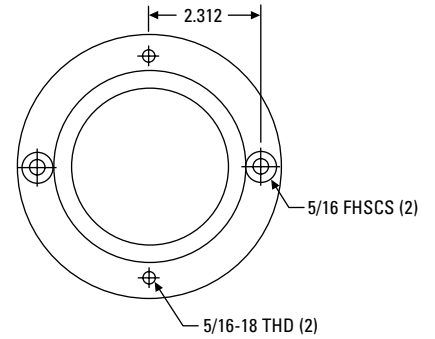
ITEM NO.

LR192



ITEM NO.

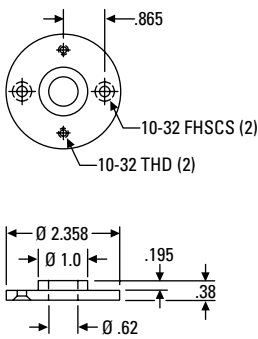
LR174



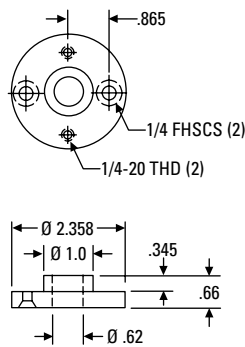
ITEM NO.

LR201

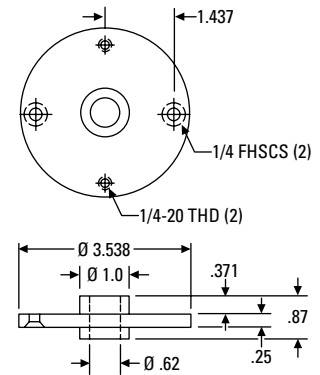
Quick-Change Components Bottom Locating Rings



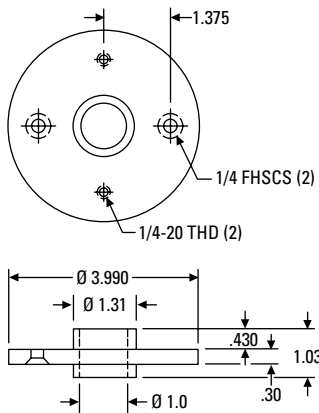
ITEM NO.	DESCRIPTION
LR135	Locating Ring
EX37M10	Knockout Rod CC



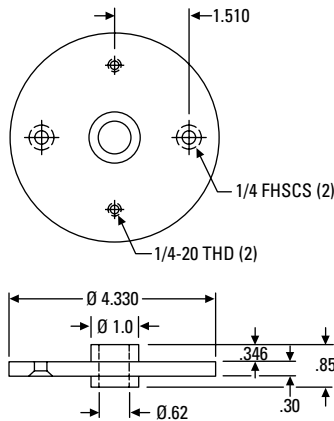
ITEM NO.	DESCRIPTION
LR172	Locating Ring
EX37M10	Knockout Rod CC



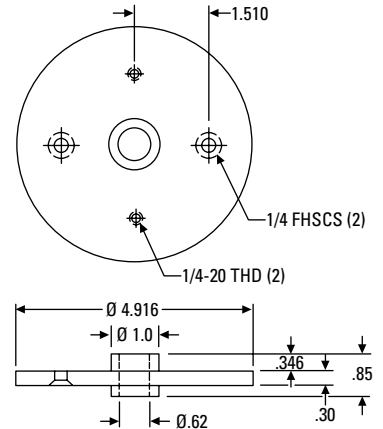
ITEM NO.	DESCRIPTION
LR142	Locating Ring
EX37M10	Knockout Rod CC



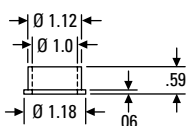
ITEM NO.	DESCRIPTION
LR182	Locating Ring
EX47M10	Knockout Rod CC



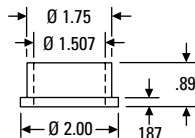
ITEM NO.	DESCRIPTION
LR165	Locating Ring
EX37M10	Knockout Rod CC



ITEM NO.	DESCRIPTION
LR166	Locating Ring
EX37M10	Knockout Rod CC



ITEM NO.	DESCRIPTION
LR168	Adapter bushing for 08/09UF and 84/90UF bottom locating rings.



ITEM NO.	DESCRIPTION
KOB-150	Bushing for standard mold base adapter KO rod (bronze).

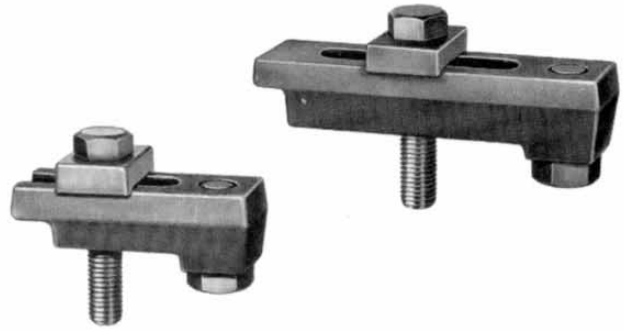
MUD Quick-Change Components for Mold Frames & Inserts | Bottom Locating Rings



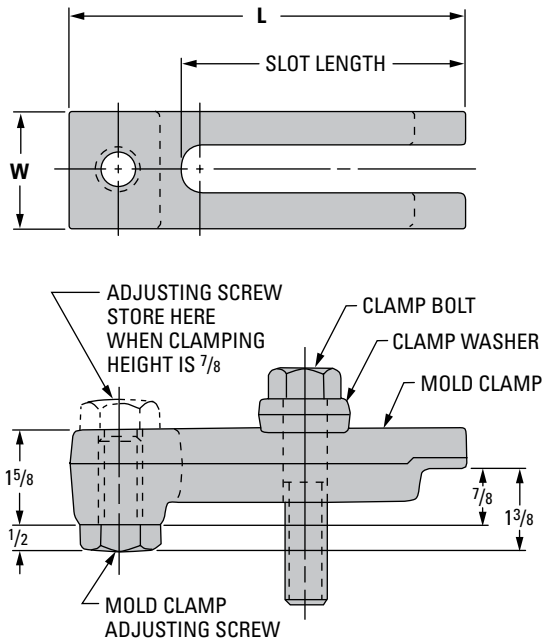
Quick-Change Components Mold Clamps

FOR PLASTIC MOLDS

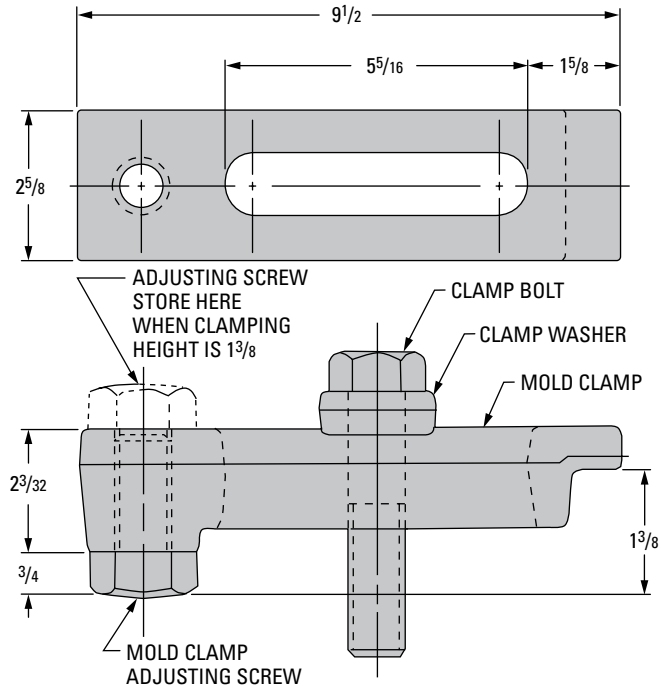
Forged from Hi-tensile steel and carbonitride hardened. The design features a hardened no-turn washer and a shape and range of sizes that permit universal application for any mold.



ITEM NO'S. MCA-4-4 TO MCA-6-7



ITEM NO. MCA-8-95



Mold Clamps for Plastic Molds – MCA

ITEM NUMBER	CLAMP DIMENSIONS			CLAMP SCREW SIZE (†) THD. x LENGTH	REPLACEMENT PARTS	
	L LENGTH	W WIDTH	SLOT LENGTH		CLAMP BOLT AND WASHER KIT	ADJUSTING SCREW
MCA-4-4	4 ³ / ₁₆	1 ⁵ / ₈	2 ¹³ / ₁₆	1/2-13 x 3"	MCK-4	MCAS-5
MCA-5-5	5 ³ / ₁₆	1 ⁷ / ₈	3 ³ / ₈	5/8-11 x 3 1/2"	MCK-5	MCAS-6
MCA-5-7	7	1 ⁷ / ₈	5	5/8-11 x 3 1/2"		
MCA-6-5	5 ³ / ₁₆	2	3 ³ / ₈	3/4-10 x 3 1/2"	MCK-6	MCAS-8
MCA-6-7	7	2	5	3/4-10 x 3 1/2"		
MCA-8-95	9 1/2	2 5/8	5 5/16	1-8 x 4 1/2"	MCK-8	MCAS-8

Mold Assembly consists of:

- 1 – Mold Clamp
- 1 – Clamp Washer
- 1 – Clamp Bolt
- 1 – Mold Clamp Adjusting Screw

QUANTITY DISCOUNTS:

Discounts apply to current Net Prices.
 60 to 99 Less 5%
 100 or more cases..... Less 10%

Standard sizes may be combined on one order for quantity discounts.

†NOTE:

Mold Clamp Screws supplied with assembly are of high-tensile strength alloy steel. Lengths shown will accommodate clamping ledges up to a maximum of 1.375. For Clamping ledges in excess of 1.375, use longer screws accordingly.

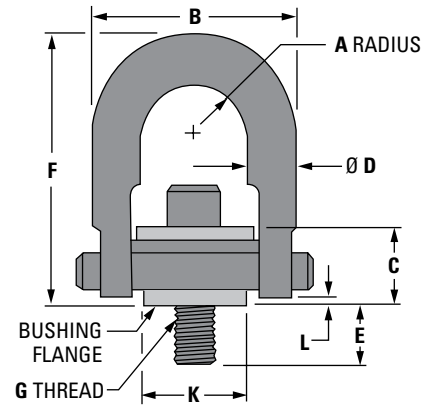
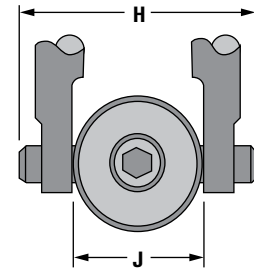
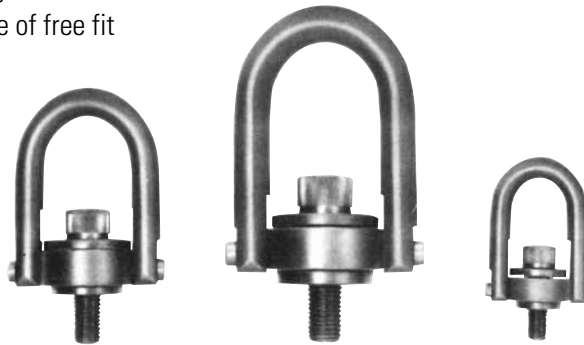


Hoist Rings – INCH Installation and Ordering Information

Installation Data

Tap workpiece for hoist ring bolt with axis vertical to mounting surface. Work surface should be flat and smooth to provide full 360° flush seating for the bushing flange. For installation in ferrous materials, the screw should be tightened to the full torque loading recommended in column TL below, +25% – 0. (SAFETY NOTE: Some loosening may develop after prolonged service in a permanent installation. It is advisable to periodically retighten the mounting bolt to maintain the specified torque value.) For maximum safety with soft metal workpieces such as aluminum, use extra length bolts with minimum effective thread engagement of 2 times thread diameter. The use of free fit spacers between the bushing flange and mounting surface is not recommended, as this will reduce the safe load rating on angularly applied loads. Hoist ring must be free to swivel 360° and pivot 180° at all times.

Material: Alloy steel (certified heat treatment), black oxide
Safety Factor: 5 times rated load in any direction
Range of Movement: 360° swivel; 180° pivot
Dimensions: Shown in inches (in)



NOTE: Additional hoist ring sizes and bolt lengths (including metric versions) are also available on request.

Hoist Rings – SHR (includes bolt and retaining ring)

ITEM NUMBER	RATED LOAD (LBS)	A RADIUS	B	C	Ø D	E EFFECTIVE THREAD PROJECTION	F	G	H CLEARANCE DIMENSION	J	K	L	TL** FOOT LBS	WEIGHT
SHR0001	800	7/16	1 5/8	41/64	3/8	9/16	2 5/8	5/16-18	2	1	3/4	3/32	7	5 OZ.
SHR0002	1,000	7/16	1 5/8	41/64	3/8	9/16	2 5/8	3/8-16	2	1	3/4	3/32	12	5 OZ.
SHR0003	2,500	7/8	3 1/4	1 5/32	3/4	3/4	4 3/4	1 1/2-13	3 5/8	2	1 1/2	3/32	28	2 LB. 5 OZ.
SHR0004	4,000	7/8	3 1/4	1 5/32	3/4	1	4 3/4	5/8-11	3 5/8	2	1 1/2	3/32	60	2 LB. 7 OZ.
SHR0005	5,000	7/8	3 1/4	1 5/32	3/4	1	4 3/4	3/4-10	3 5/8	2	1 1/2	3/32	100	2 LB. 9 OZ.
SHR0006	10,000	1 13/32	4 13/16	1 11/16	1	1 1/2	6 1/2	1"-8	5 1/8	3	2 5/16	17/64	230	7 LB.
SHR0007	15,000	1 3/4	6	2 1/8	1 1/4	1 7/8	8 3/4	1 1/4-7	6 1/2	3 3/4	3 1/4	11/32	470	14 LB.

**Recommended torque load +25% – 0

Replacement Bolt Kits – SHK (includes bolt and retaining ring)

ITEM NUMBER	USED WITH	SIZE	E
SHK0001	SHR0001	5/16-18 X 1 1/4	9/16
SHK0002	SHR0002	3/8-16 X 1 1/4	9/16
SHK0003	SHR0003	1/2-13 X 2	3/4
*SHK0004		1/2-13 X 2 1/4	1
SHK0005	SHR0004	5/8-11 X 2 1/4	1
*SHK0006		5/8-11 X 2 1/2	1 1/4
SHK0007	SHR0005	3/4-10 X 2 1/4	1
*SHK0008		3/4-10 X 2 3/4	1 1/2
SHK0009	SHR0006	1"-8 X 3 1/4	1 1/2
*SHK0010		1"-8 X 3 3/4	2
SHK0011	SHR0007	1 1/4-7 X 4	1 7/8



NOTES:

E = Effective Thread Projection

Bolts not marked with an asterisk () are identical to those supplied with hoist rings. Bolts marked with an asterisk are longer, to provide thread projection of twice the bolt diameter, recommended for use with softer metals.

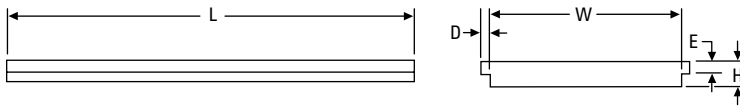
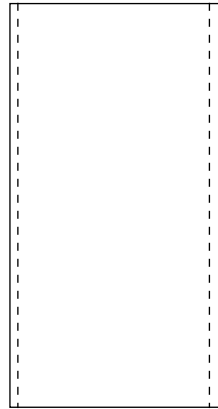
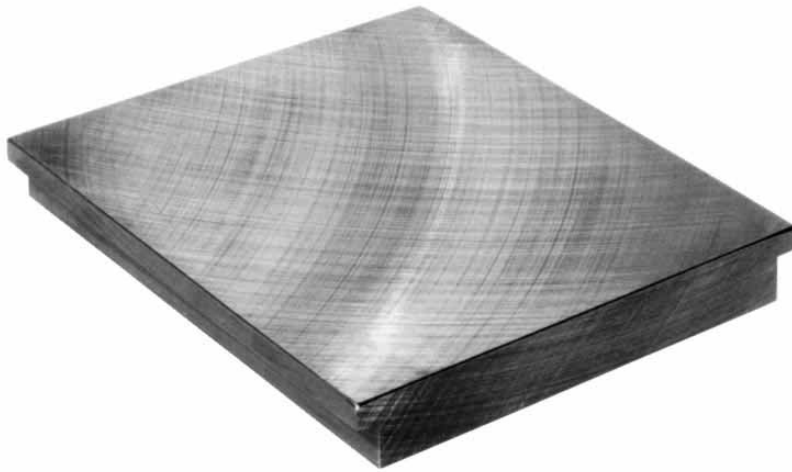
QUANTITY DISCOUNTS:

Discounts apply to current Net Prices. Ring and replacement bolts counted separately for quantity discounts. Different sizes may be combined.

25 to 49 Less 10%
 50 to 99 Less 13%
 100 or more Quoted by request



Quick-Change Components Ear Plates for T-Style Insert Molds



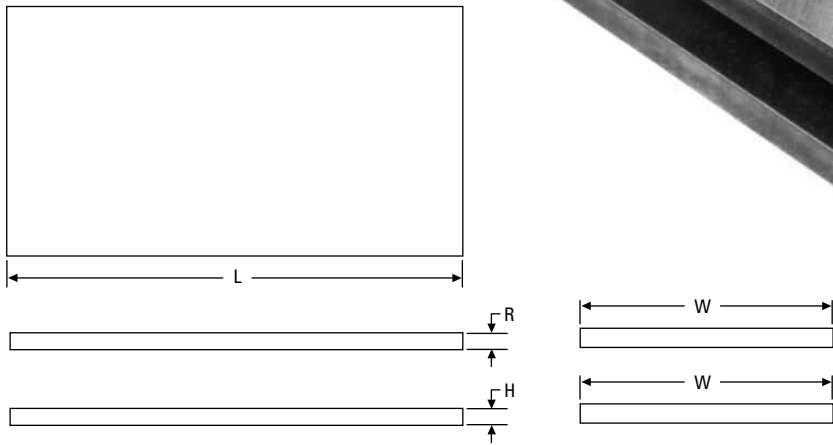
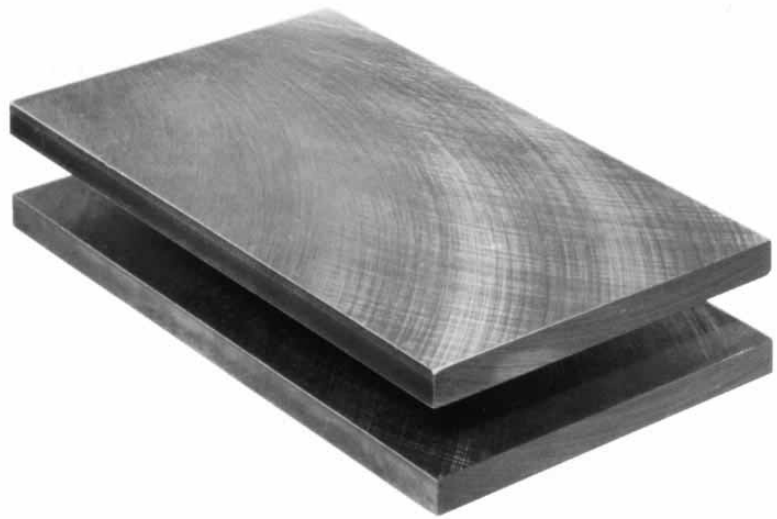
Ear Plates for T-Style Insert Molds

ITEM NO.	W	L	H	E	D
05/05EPU	3.248	3.750	0.450	0.184	0.175
07/07EPU	4.496	6.250	0.625	0.246	0.230
08/09EPU	4.996	8.000	0.750	0.246	0.230
08/10EPU	4.996	9.000	0.750	0.246	0.230
84/90EPU	6.496	8.000	0.750	0.246	0.230
09/07EPU	5.996	6.000	0.750	0.246	0.230
09/07EPE	5.996	6.000	0.750	0.246	0.230
10/12EPU	6.996	10.874	1.000	0.494	0.360
10/14EPU	6.996	12.874	1.000	0.494	0.360
10/16EPU	6.996	14.874	1.000	0.494	0.360
11/11EPU	7.996	10.000	1.000	0.494	0.360
12/08EPU	7.996	7.000	1.000	0.494	0.360
12/14EPU	7.994	12.874	1.000	0.494	0.360
12/16EPU	7.994	14.874	1.000	0.494	0.360
12/18EPU	7.994	16.874	1.000	0.494	0.360
12/20EPU	7.994	18.874	1.000	0.494	0.360
13/16EPU	8.994	14.874	1.000	0.494	0.360
13/18EPU	8.994	16.874	1.000	0.494	0.360
13/20EPU	8.994	18.874	1.000	0.494	0.360
13/22EPU	8.994	20.874	1.000	0.494	0.360
14/16EPU	9.994	14.874	1.000	0.494	0.360
14/18EPU	9.994	16.874	1.000	0.494	0.360
14/20EPU	9.994	18.874	1.000	0.494	0.360
14/22EPU	9.994	20.874	1.000	0.494	0.360
16/18EPU	10.994	15.874	1.500	0.744	0.450
16/21EPU	10.994	18.874	1.500	0.744	0.450
16/24EPU	10.994	21.874	1.500	0.744	0.450
16/27EPU	10.994	24.874	1.500	0.744	0.450
18/20EPU	11.994	17.874	1.500	0.744	0.450
18/26EPU	11.994	23.874	1.500	0.744	0.450

Ordering Information for Ear Plates for T-Style Insert Molds

- Item number and description
- First four digits of item number must match those of companion insert molds
- Item number is for a set of two (2) plates
- Steel grade: Prehard (240-330 BHN) unless otherwise specified

Quick-Change Components Standard Ejector Plate Sets



MUD Quick-Change Components for Mold Frames & Inserts | Standard Ejector Plate Sets

Standard Ejector Plate Sets for U Frame Series

ITEM NO.	R	H	W	L
05/05EJU	0.240	0.240	2.75	3.62
07/07EJU	0.360	0.360	3.87	6.00
08/09EJU	0.360	0.360	4.00	7.88
08/10EJU	0.360	0.360	4.00	8.88
84/90EJU	0.360	0.360	5.50	7.87
09/07EJE	0.360	0.360	5.00	5.88
10/12EJU	0.480	0.480	6.00	10.75
10/14EJU	0.480	0.480	6.00	12.75
10/16EJU	0.480	0.480	6.00	14.75
11/11EJU	0.480	0.480	7.00	9.88
12/08EJU	0.360	0.360	7.00	6.88
12/14EJU	0.480	0.480	7.00	12.75
12/16EJU	0.480	0.480	7.00	14.75
12/18EJU	0.480	0.480	7.00	16.75
12/20EJU	0.480	0.480	7.00	18.75
13/16EJU	0.480	0.480	8.00	14.75
13/18EJU	0.480	0.480	8.00	16.75
13/20EJU	0.480	0.480	8.00	18.75
13/22EJU	0.480	0.480	8.00	20.75
14/16EJU	0.480	0.480	9.00	14.75
14/18EJU	0.480	0.480	9.00	16.75
14/20EJU	0.480	0.480	9.00	18.75
14/22EJU	0.480	0.480	9.00	20.75
16/18EJU	0.600	0.600	9.75	15.75
16/21EJU	0.600	0.600	9.75	18.75
16/24EJU	0.600	0.600	9.75	21.75
16/27EJU	0.600	0.600	9.75	24.75
18/20EJU	0.600	0.600	10.75	17.75
18/26EJU	0.600	0.600	10.75	23.75

Standard Ejector Plate Sets for H Frame Series

ITEM NO.	R	H	W	L
07/07EJH	0.240	0.240	2.75	3.00
08/09EJH	0.360	0.360	4.00	3.00
10/12EJH	0.360	0.360	4.00	4.50
10/18EJH	0.360	0.360	4.00	7.50
11/14EJH	0.360	0.360	5.00	5.50
11/18EJH	0.360	0.360	5.00	7.50
12/11EJH	0.360	0.360	6.00	4.00
12/13EJH	0.360	0.360	6.00	5.00
12/15EJH	0.360	0.360	6.00	6.00
12/19EJH	0.360	0.360	6.00	8.00
13/13EJH	0.360	0.360	7.00	5.00
13/15EJH	0.360	0.360	7.00	6.00
13/17EJH	0.360	0.360	7.00	7.00
13/19EJH	0.360	0.360	7.00	8.00
13/23EJH	0.360	0.360	7.00	10.00
14/15EJH	0.360	0.480	8.00	6.00
14/17EJH	0.360	0.480	8.00	7.00
14/19EJH	0.360	0.480	8.00	8.00
14/21EJH	0.360	0.480	8.00	9.00
14/25EJH	0.360	0.480	8.00	11.00
15/15EJH	0.360	0.480	8.75	5.88
15/17EJH	0.360	0.480	8.75	6.88
15/19EJH	0.360	0.480	8.75	7.88
15/21EJH	0.360	0.480	8.75	8.88
15/25EJH	0.360	0.480	8.75	10.88
17/19EJH	0.480	0.600	9.75	7.88
17/26EJH	0.480	0.600	9.75	11.38
18/22EJH	0.480	0.600	10.75	9.38
18/26EJH	0.480	0.600	10.75	11.38
18/30EJH	0.480	0.600	10.75	13.38

Standard Ejector Plate Sets for Double H Frame Series

ITEM NO.	R	H	W	L
12/08EJD	0.240	0.240	2.75	3.00
16/09EJD	0.360	0.360	4.00	3.00
16/12EJD	0.360	0.360	4.00	4.50
16/18EJD	0.360	0.360	4.00	7.50
20/14EJD	0.360	0.360	5.00	5.50
22/19EJD	0.360	0.360	6.00	8.00
24/23EJD	0.360	0.360	7.00	10.00

Standard Ejector Plate Sets for Removable Center Bar Series

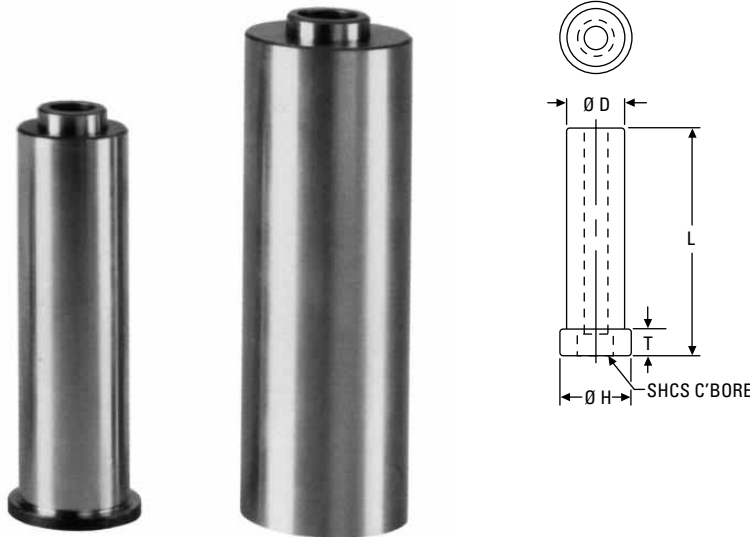
ITEM NO.	R	H	W	L
08/10EJB	0.360	0.360	4.00	3.88
84/90EJB	0.360	0.360	5.50	3.38
11/11EJB	0.480	0.480	7.00	3.88

Ordering Information for Standard Ejector Plate Sets

- Item number and description
- First four digits of item number must match those of companion insert molds
- Item number is for a set of two (2) plates
- Steel grade: Mild

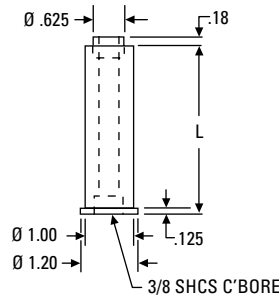
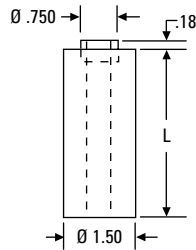
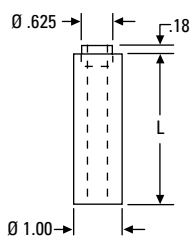


Quick-Change Components Guide Posts



Mold Retainer Pillars

ITEM NO.	L	D	H	T	SHCS
MRP-1025	2.501	.75	1.00	.350	5/16-18
MRP-1026	2.626	.75	1.00	.350	5/16-18
MRP-1037	3.751	1.00	1.25	.350	3/18-16
MRP-1041	4.126	1.00	1.25	.350	3/18-16
MRP-1035	3.501	1.00	1.25	.470	3/18-16
MRP-1040	4.001	1.00	1.25	.470	3/18-16



ITEM NO.	LENGTH
AGP120	2.501
AGP125	2.563
AGP128	2.876
AGP131	3.126
AGP134	3.438
AGP136	3.688

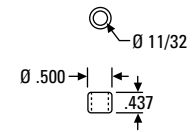
ITEM NO.	LENGTH
AGP234	3.438
AGP235	3.501
AGP236	3.688
AGP237	3.751
AGP243	4.376

ITEM NO.	LENGTH
CSP125	2.501
CSP127	2.751
CSP135	3.501
CSP140	4.001

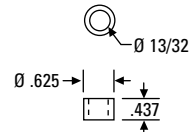
Furnished with PPAB-6.

Furnished with PPAB-7.

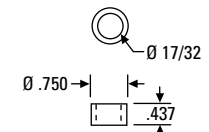
Furnished with PPAB-6.



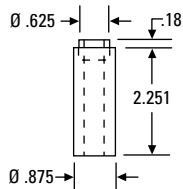
ITEM NO.
PPAB-5



ITEM NO.
PPAB-6

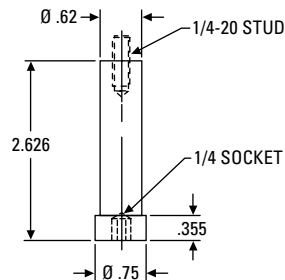


ITEM NO.
PPAB-7

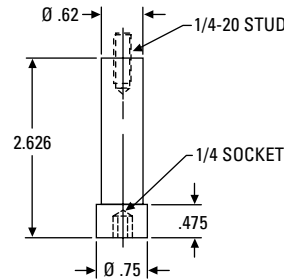


ITEM NO.
AGP875

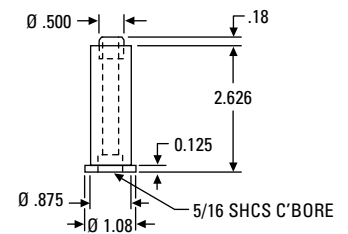
Furnished with PPAB-6.



ITEM NO.
CBP0809



ITEM NO.
CBP8490



ITEM NO.
AGP826

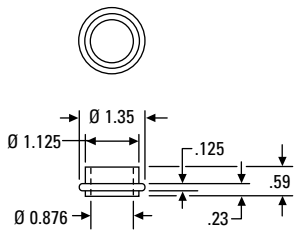
Insert mold guide post
furnished with PPAB-5.

MUD Quick-Change Components for Mold Frames & Inserts | Guide Posts



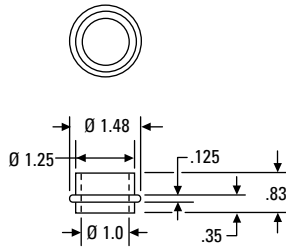
Quick-Change Components Guide Bushings

MUD Quick-Change Components for Mold Frames & Inserts | Guide Bushings



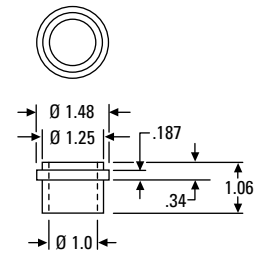
ITEM NO.
AGB360

Insert mold guide bushing.

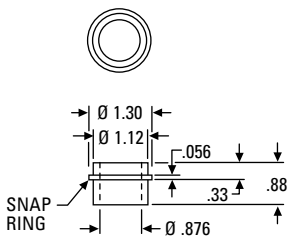


ITEM NO.
AGB480

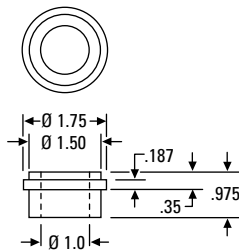
Insert mold guide bushing.



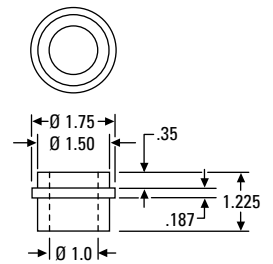
ITEM NO.
RCS0010



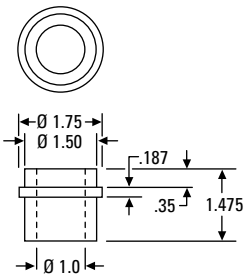
ITEM NO.
MUD2-0087



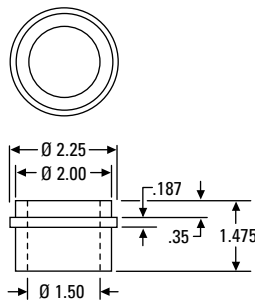
ITEM NO.
CB0010



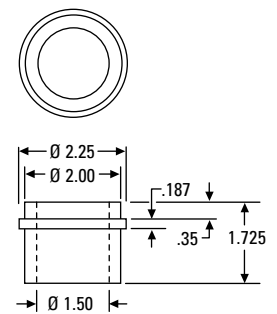
ITEM NO.
MUD2-0010-8



ITEM NO.
MUD2-0010-11



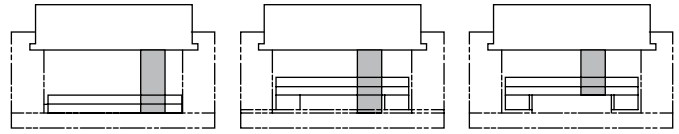
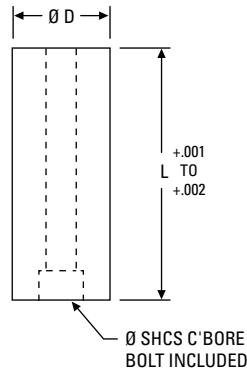
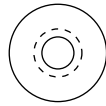
ITEM NO.
MUD2-0015-11



ITEM NO.
MUD2-0015-13



Quick-Change Components Insert Mold Pillar Posts



FRAME WITHOUT
EJECTOR PLATE

FRAME WITH EJECTOR
PLATE AND NO PAD

FRAME WITH EJECTOR
PLATE AND SUPPORT PAD

Insert Mold Pillar Posts

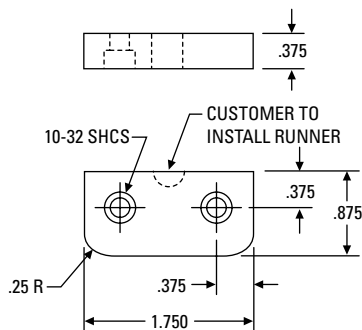
ITEM NO.	DIAMETER	LENGTH	BOLT SIZE
MPP1025	1.00	2.500	5/16
MPP1026	1.00	2.625	5/16
MPP1035	1.00	3.500	5/16
MPP1037	1.00	3.750	3/8
MPP1040	1.00	4.000	3/8
MPP1041	1.00	4.125	3/8
MPP1225	1.25	2.500	5/16
MPP1226	1.25	2.625	5/16
MPP1235	1.25	3.500	5/16
MPP1237	1.25	3.750	3/8
MPP1240	1.25	4.000	3/8
MPP1241	1.25	4.125	3/8
MPP1525	1.50	2.500	5/16
MPP1526	1.50	2.625	5/16
MPP1535	1.50	3.500	5/16
MPP1537	1.50	3.750	3/8
MPP1540	1.50	4.000	3/8
MPP1541	1.50	4.125	3/8

Bolt included with each pillar post.
Other sizes available on request.

D-M-E cold rolled steel pillar posts are precision ground to length for MUD Quick-Change systems. Each is predrilled and supplied with socket head cap screws for easy installation in insert molds.

Frames supplied with master ejector plates are supplied standard with pillar post pads. The pillar post pad is the same height as the height of the ejection. In cases where pillar post pads are not utilized, the pillar post will rest on the back clamp plate. All molds require pillar posts and the pillar post will be precision ground .001 to .002 higher than the height of ejection.

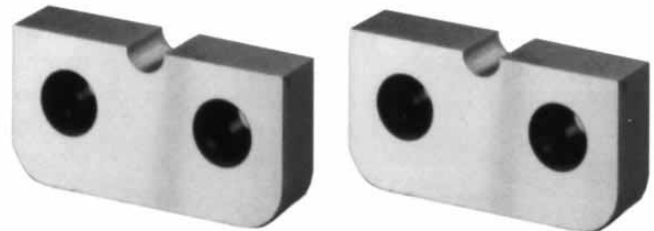
Quick-Change Components Hardened Runner Pads



ITEM NO.

09/07HRP

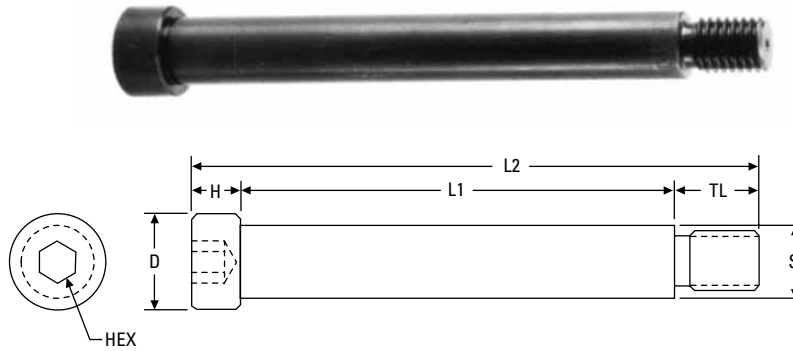
One required for each insert mold half.



D-M-E hardened runner pads are designed for installation in insert molds ordered for MUD Quick-Change shuttle frame applications (09/07UF, 09/07EB and 12/08UF). These pads allow the molding machine injection nozzle to contact the companion insert mold without damage.

Quick-Change Components

Shoulder Screws, Sprue Plugs & Rest Buttons



Frame Shoulder Screws

ITEM NO.	S	TL	L1	L2	H	D	HEX	THD
SS5022	0.498	0.63	2.250	3.19	0.312	0.750	1/4	3/8-16
SS5030	0.498	0.63	3.000	3.94	0.312	0.750	1/4	3/8-16
SS6230	0.623	0.75	3.000	4.13	0.375	0.875	5/16	1/2-13
SS6240	0.623	0.75	4.000	5.13	0.375	0.875	5/16	1/2-13
SS6245	0.623	0.75	4.500	5.63	0.375	0.875	5/16	1/2-13
SS7545	0.748	0.88	4.500	5.88	0.500	1.000	3/8	5/8-11
SS7555	0.748	0.88	5.500	6.88	0.500	1.000	3/8	5/8-11

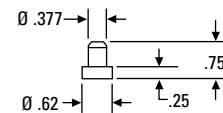
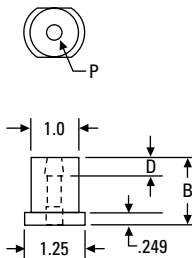
Shoulder screws are installed in H frames and Double H frames to align the bottom clamp plate and ejector rails with the support plate.



Sprue Puller Plugs

ITEM NO.	P	B	D
SPP25-13	0.250	1.377	0.336
SPP25-18	0.250	1.877	0.336
SPP25-23	0.250	2.377	0.336
SPP25-28	0.250	2.877	0.336
SPP31-13	0.312	1.377	0.367
SPP31-18	0.312	1.877	0.367
SPP31-23	0.312	2.377	0.367
SPP31-28	0.312	2.877	0.367
SPP31-33	0.312	3.377	0.367
SPP31-38	0.312	3.877	0.367
SPP38-13	0.375	1.377	0.430
SPP38-18	0.375	1.877	0.430
SPP38-23	0.375	2.377	0.430
SPP38-28	0.375	2.877	0.430
SPP38-33	0.375	3.377	0.430
SPP38-38	0.375	3.877	0.430

Sprue puller plugs are installed in the center section of H frame and Double H frame ejector halves. Each center section has a 1.000 hole to accept this plug. The plug has been machined to receive three pin and puller sizes for accommodating a range of sprue and runner sizes.



Rest Buttons

ITEM NO.

RB62

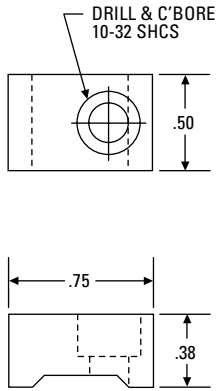
Rest buttons are installed in master ejector plates.

Quick-Change Components Insert Mold Holding Clamps

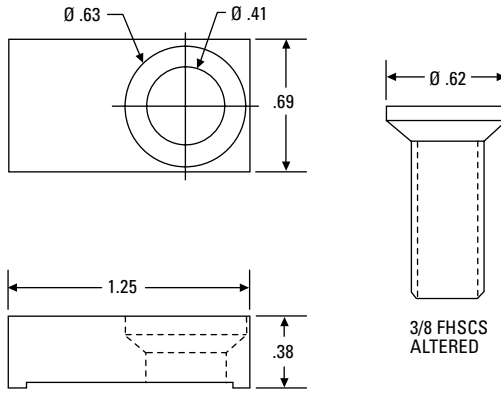


Insert Mold Holding Clamps

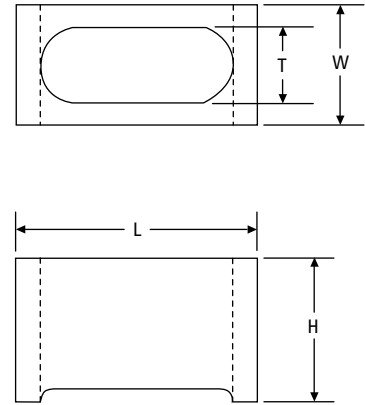
ITEM NO.	W	L	H	T
UC1032	(see drawing below left)			
UC3862	(see drawing below center)			
UC2520	0.50	1.00	0.50	0.27
UC3816	0.62	1.25	0.75	0.40
UC5013	1.00	1.88	1.00	0.53



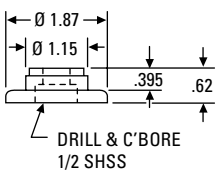
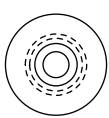
UC1032 insert mold holding clamp is designed for frames:
06/04 FAU 301
05/05 FAU 301
07/05 FAU 301
07/10 FAU 301
04/05 FAU 301



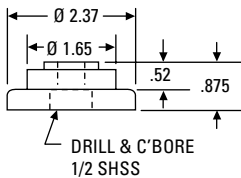
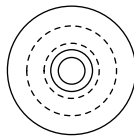
UC3862 insert mold holding clamp is designed for 09/07 UF 321 frame when clearance between machine safety gate and frame is minimal.



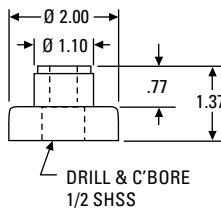
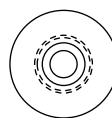
Quick-Change Components Mold Base Adapter Frame Rollers



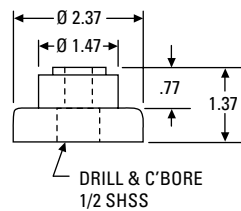
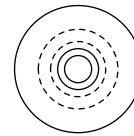
ITEM NO.
MBAR375-18



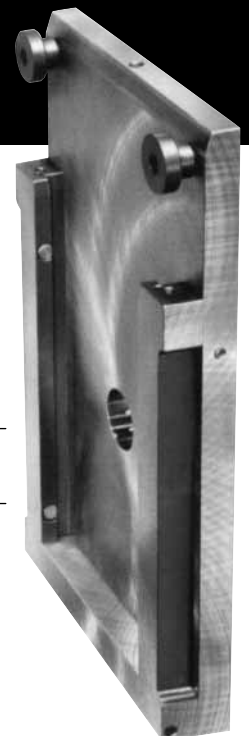
ITEM NO.
MBAR500-23



ITEM NO.
MBAR750-20



ITEM NO.
MBAR750-23



MUD Quick-Change Components for Mold Frames & Inserts | Holding Clamps & Frame Rollers

