

# 2-Stage, Internal Latch Locks & External Latch Locks

**15%  
OFF!**



## 2-Stage Ejectors

Precision control of 2-stage ejection

- Available in Top Last or Bottom Last
- Customizable stroke length
- First and second stage stroke are independent
- Control sequence & distance with collapsible cores or expandable cavity mold design

**View Product Details**   **Order Now**

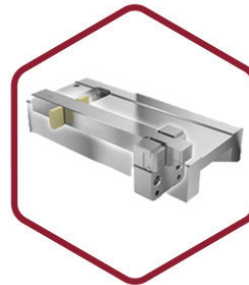
**15%  
OFF!**

## Internal Latch Locks

Allows control of the mold plate opening sequence on mold bases with stripper plates

- For floating plates including stripper plate molds and three plate molds
- Predetermined design guidelines with on-line CAD availability
- Puller bars may be used to delay stroke
- Sleeve can be added for guided ejection

**View Product Details**   **Order Now**



## External Latch Locks

Short on room inside your mold?

Control plate latching sequences from the outside with the DME External Latch Lock

- Once set adjustments cannot be accidentally changed or tampered with
- Size selection based on mold size
- Urethane bumpers provide shock absorption at the end of travel

**View Product Details**   **Order Now**



**Valid 4/12/17 - 6/12/17**

