

Granulator Knives

Replacement granulator knives, manufactured to precise tolerance to replace original equipment. Available in 2 grades of steel: OEM Steel: Standard 52100 steel formulation, which provides a good balance between wear and impact resistance. Recommended for beside-the-press-applications. Super Alloy: Premium grade D2 tool steel formulation, provides much longer life and is better suited to high usage cycles and tough materials. Greatly increases the time between sharpening. Ideal for heavy usage central grinding.



Make & Model	Length	Width	Thick-ness	Fly/Bed	Description	Qty/set	Part No.	Price Each	
								OEM	D2
ALLSTEEL									
6X6	6.000	1.375	0.687	F	Hook Fly 3 Holes	2-3	A6HF	\$85	\$128
6X6	6.000	1.937	0.500	B	Bed 2 Tapped Dowels	2	A6B	\$86	\$130
6X8	8.000	2.000	0.425	F	Fly 4 Holes	3	A8F	\$76	\$113
6x8	8.000	1.500	0.430	B	Bed 4 Open Slots	1-2	A8B	\$82	\$122
6x8	8.000	1.312	0.468	F	Hook Fly 4 Holes	3	A8HF	\$85	\$128
6x8	8.000	1.815	0.500	B	Bed 2 Tapped Dowels	2	A8BA	\$86	\$130
10x22 can use with A13F	8.490	2.840	0.625	F	Reverse Bevel 4 Holes		A9FB	\$82	\$205
10x17, 10x22, 12x17, 14x22, 10x9, 14x17, C124 can use with A13FC	8.500	2.850	0.625	F	Keen Edge 4 Holes	2	A9F	\$107	\$136
10x17, 10x22, 14x22, 10x9, 14x17, 12x17, can use with A13C	8.500	2.593	0.625	B	No Holes Double Cutting Edge With Groove	2	A8BD	\$107	\$136
8x10, 9x11	10.000	2.875	0.625	F	Reverse Bevel 5 Holes	2	A10F	\$104	\$134
8x10, 9x11	10.000	1.875	0.500	B	5 Slots	2	A10B	\$101	\$144
8x10, 9x11	9.990	1.875	0.500	B	5 Open Slots		A10BB	\$78	\$118
12x13, 1236, 1337, can use with A24F	11.500	3.312	0.562	F	Reverse Bevel 5 Holes Counterbored		A12FC	\$100	\$150
1236, 1337, can use with A24BB	11.500	2.375	0.562	B	5 Slots		A11BA	\$97	\$145
	12.000	4.187	0.580	F	4 Holes Counterbored		A12FD	\$104	\$156
11x13, 10x12, New Style	11.740	3.312	0.625	F	Reverse Bevel 5 Holes Counterbored	2	A12F	\$128	\$156
10x12, 11x13, New Style	11.750	2.375	0.625	B	5 Open Slots	2	A11B	\$128	\$156
10x12	11.500	3.312	0.625	F		2	A11F	\$97	\$148
10x12 (old)	11.535	2.375	0.591	B	5 Slots	2	A12B	\$97	\$148
10x13	11.500	2.500	0.562	F	Radial Rotor 4 Holes		A12FE	\$102	\$151
2449, 2436	12.000	3.445	0.875	B	4 Slots		A11BB	\$100	\$150
16x39, 14x22, 14x26, 14x51, 10x13, 1225, can use with A9FB	12.750	2.843	0.625	F	Reverse Bevel 6 Holes	9	A13F	\$138	\$173
16x39, 14x26, 14x22, 14x51	12.750	2.593	0.625	B	No Holes Double Cutting Edge	6	A13B	\$138	\$173
14X26, 14X22, 14X26, 14X51, 10X13 can use with A9F	12.750	2.781	0.625	F	Keen Edge 6 Holes		A13FC	\$107	\$160
14x26, 14x22, 10x13, can use with A8BD	12.750	2.562	0.625	B	No Holes Double Cutting Edge	6	A13C	\$174	\$260
14x22	10.733	2.812	0.625	F	Reverse Bevel 2 Counterbored Holes	3	A11FB	\$96	\$145

Granulator Knives



Make & Model	Length	Width	Thick-ness	Fly/Bed	Description	Qty/set	Part No.	Price Each	
								OEM	D2
ALLSTEEL (cont...)									
12x14, 1337, 1236, can use with A11BA	23.875	2.375	0.562	B	9 Slots	2	A24BB	\$217	\$325
16x39, 10x13	12.750	2.875	0.625	B	6 Slots		A13BA	\$132	\$198
10x18, 11x19, 12x18	18.000	3.312	0.580	F	Reverse Bevel 7 Holes Counterbored	2	A18F	\$170	\$240
10x18, 11x19, 12x18	18.000	2.375	0.625	B	7 Slots	2	A18B	\$170	\$240
7x18, 9x36	18.000	1.875	0.500	F	Radial Rotor 6 Holes	5	A19F	\$142	\$212
7x18	18.000	1.875	0.937	F	Hook Fly 6 Holes Recessed To 1/2	5	A19HF	\$216	\$280
7x18, 9x36	18.000	2.812	0.750	B		2	A36B	\$169	\$253
12x36	18.000	2.875	0.875	F	Radial Rotor 9 Slots	10	A17F	\$240	\$304
12x36	18.000	2.875	1.250	F	Hook Fly 9 Holes	10	A18HF	\$184	\$276
12x36	18.000	3.875	1.125	B	6 Slots	4	A18BA	\$184	\$276
9x36	17.990	2.875	0.500	F	Radial Rotor 6 Holes	5	A36F	\$152	\$217
	18.000	3.500	0.875	B	6 Slots		A18BB	\$266	\$374
9x36	18.000	2.361	1.125	F	Hook Fly 6 Holes		A36HF	\$240	\$326
24x36	18.000	3.312	0.875	B	6 Slots		A17BA	\$144	\$217
24x36	18.000	3.875	0.687	F	Keen Edge 6 Holes Countersunk		A17FA	\$152	\$228
24x36	17.970	3.875	0.687	F	Keen Edge 6 Holes Counterbored		A18FA	\$152	\$228
8x20	20.000	2.375	1.125	F	Hook Fly 7 Holes (recessed to 5/8")	5	A20F	\$294	\$368
8x20	20.000	3.375	0.875	B	7 Slots	2	A20B	\$196	\$293
15x21	20.562	3.215	0.562	F	7 Holes	3	A20FA	\$200	\$302
15x21	21.208	2.750	0.531	B	7 Slots	2	A21B	\$199	\$300
1224, HOG	24.000	2.875	1.375	F	Hook Fly 9 Holes		A24HFA	\$203	\$299
12x24, 1236, 1337, 12x48, 13x49, can use with A12FC	23.812	3.312	0.562	F	Reverse Bevel Counterbored Same as A23F except angle location		A24F	\$217	\$325
12x24	23.985	2.750	1.250	F	Hook Fly 9 Holes	5	A24HFB	\$292	\$437
12x24	24.000	3.875	1.125	B	Open Slots	2	A24BA	\$320	\$480
12x24	23.990	2.875	1.370	F	Hog Hook Fly 9 Holes		A24HFC	\$215	\$320
9x24	24.000	2.375	0.625	F	Radial Rotor 9 Holes	5	A25F	\$408	\$510
9x24, 13x25	24.000	2.375	1.125	F	Hook Fly 9 Holes (Recessed to 5/8")	5	A25HF	\$352	\$440
9x24, 13x25	24.000	3.375	0.875	B	9 Slots	2	A23B	\$234	\$352
13x25	24.500	2.735	0.625	F	High Shear 12 Holes		A24FB	\$211	\$317
13x49, 13x25, 12x48	23.812	3.312	0.562	F	9 Holes Same as A24F except angle location	8	A23F	\$228	\$342
13x49, 12x48	23.875	2.375	0.562	B	9 Slots	4	A23BC	\$228	\$328
	23.960	3.875	1.125	B	9 Slots		A23BD	\$461	\$510
1422,	10.750	2.500	1.125	B	3 Slots Single Bevel	2	A11BC	\$90	\$134

B

featuring the best of:

235

Northern Supply (800-365-6565) • Nickerson Machinery (800-821-9534) • OHS (Ontario-888-809-7050/Quebec-888-475-9224)

Granulator Knives

Replacement granulator knives, manufactured to precise tolerance to replace original equipment. Available in 2 grades of steel: OEM Steel: Standard 52100 steel formulation, which provides a good balance between wear and impact resistance. Recommended for beside-the-press-applications. Super Alloy: Premium grade D2 tool steel formulation, provides much longer life and is better suited to high usage cycles and tough materials. Greatly increases the time between sharpening. Ideal for heavy usage central grinding.



Make & Model	Length	Width	Thick-ness	Fly/Bed	Description	Qty/set	Part No.	Price Each	
								OEM	D2
ALLSTEEL (cont...)									
1422,	10.733	2.865	0.625	F	2 Counterbored Holes Keen Edge		A11FC	\$96	\$145
30x49	23.990	2.875	0.875	F	Radial Rotor 9 Holes	5	A24FA	\$208	\$346
30x49	11.990	3.440	0.875	B	4 Slots	8	A12BE	\$100	\$184
	23.875	2.750	0.562	B	9 Slots		A24BC	\$230	\$346
30x49	23.990	2.875	0.875	F	9 Holes Keen Edge		A24FC	\$164	\$246
14x26	12.250	2.850	0.625	F	Right Hand 6 Holes Keen Edge		A13FR	\$107	\$160
14x26	12.250	2.850	0.625	F	Left Hand 6 Holes Keen Edge		A13FL	\$107	\$160
6P6	6.000	1.750	0.313	B	5 Open Slots Single Bevel		A6BA	\$53	\$79
AMACOIL									
8x8, GU0808, GU88	7.625	2.375	0.375	F	Keen Edge 5 Holes	2-3	AM7F	\$68	\$102
8x8, GU0808, GU88, POLYMER A88	7.875	1.750	0.375	B	3 Slots	2	AM8B	\$103	\$124
AG-88, GU808, GU0808	7.785	2.375	0.375	F	High Shear 5 Holes	3	AM8F	\$68	\$103
AG-1010	9.625	2.625	0.500	F	Reverse Bevel 6 slots		AM10FA	\$104	\$118
	9.973	2.750	0.500	F	6 Holes High Shear		AM10FB	\$92	\$139
AG-1010	9.610	2.750	0.500	F	Reverse Bevel 6 Holes	2	AM9F	\$104	\$118
AG-1010	9.610	2.750	0.500	F	6 Holes Keen edge		AM10F	\$104	\$118
HMG1010, 1010-A	9.625	3.500	0.500	F	Keen Edge 2 Slots	3	AM9FA	\$128	\$154
AG/HMG1010, 1010-A	9.875	2.000	0.500	B	4 Slots	2	AM10B	\$104	\$118
	9.984	2.750	0.500	F	High Shear 6 Slots		AM9FC	\$86	\$130
GU1421	11.750	3.880	0.625	F	High Shear 4 Holes	8	AM12FB	\$119	\$148
GU1421	20.500	3.875	0.625	F	High Shear 5 Holes	5	AM20F	\$179	\$224
GU421	10.437	2.505	0.625	B	4 Slots	4	AM10BA	\$104	\$154
GU1427, 1627	13.312	3.875	0.625	F	High Shear 3 Holes	10	AM13F	\$119	\$150
GU1427, 1627	14.625	3.875	0.625	F	High Shear 5 Holes	8	AM14F	\$143	\$196
GU1427, 1627	13.437	2.500	0.625	B	5 Slots	2-4	AM14B	\$157	\$202
GU1415	14.865	2.505	0.625	B	5 Slots	2	AM15B	\$131	\$198
GU1415	14.062	4.500	0.593	F	High Shear 4 Holes		AM14FB	\$167	\$250
GK1000	20.625	3.750	0.937	F	Keen Edge 4 Slots	10	AM21F	\$284	\$371
	20.615	3.750	0.937	F	4 Slots 5 Tapped Holes Keen Edge		AM21FA	\$239	\$359
	14.625	3.875	0.625	F	5 Open Slots		AM15F	\$160	\$240
HMG2652	25.250	5.077	1.000	F		10	AM25F	\$286	\$428
HMG2652, 2652	25.938	2.995	1.000	B	9 Slots Single Bevel 2 Tapped Dowels	4	AM26B	\$264	\$396

Granulator Knives



Make & Model	Length	Width	Thick-ness	Fly/Bed	Description	Qty/set	Part No.	Price Each	
								OEM	D2
BALL & JEWEL									
	11.500	5.375	0.875	F	Keen Edge 2 Holes Counterbored		B11F	\$118	n/a
M68, M88, M75, HAF685SC, DK88, M100, 4219M	7.990	2.750	0.500	F	Keen Edge 2 Holes Countersunk	3	B8FCS	\$96	\$97
M68, M88, M75, HAF685SC, DK88, M100, 4219M	8.000	2.750	0.500	F	Keen Edge 2 Holes Counterbored	3	B8FCB	\$96	\$126
HAF685C, M68, M75, M88, DK88, M100, 4219M	8.000	2.000	0.500	B	3 Slots	2	B8B	\$102	\$126
301-3 STD. IDEAL	9.125	2.125	0.500	F	2 Holes Counterbored	3	B9F	\$70	\$106
301-3 STD. IDEAL	9.562	1.625	0.375	B	4 slots	4	B9B	\$61	\$91
MD810, M810, M110	10.000	2.750	0.500	F	Keen Edge 2 Holes Counterbored	3	B10F	\$101	\$128
MD810	10.000	2.000	0.500	B	3 Slots	2	B10B	\$101	\$128
10"	9.990	2.750	0.500	F	Reverse Bevel	3	B10FCS	\$70	\$104
MB150	11.990	3.480	0.750	F	4 Holes Counterbored		B12FF	\$88	\$134
MB150	12.000	2.750	0.750	B	4 Slots Counterbored		B12BB	\$132	\$202
MD812, IAF812P, HAF812SC, HAF812P, DK812, M200	12.000	2.750	0.625	F	Keen Edge 2 Holes Countersunk	3	B12FCS	\$128	\$157
MD812, IAF812P, HAF812SC, HAF812P, M200, DK812	12.000	2.750	0.625	F	Keen Edge 2 Holes Counterbored	3	B12FCB	\$128	\$157
MD812, M200, IAF812D, M812, HAF812SC, LB1212, DK812, DK1212	12.000	2.000	0.625	B	4 Slots	2	B12B	\$128	\$157
MD1212, BP1212S, MA1212X, 1212SX	12.000	2.875	0.750	F	Keen Edge 2 Holes Counterbored	3	B12FA	\$130	\$163
MD1212, BP1212S, 1212SX, MB1212X	12.000	2.062	0.750	B	4 Slots	2	B12BA	\$149	\$178
12", HAF812SCSX, CG812SCX	11.956	2.125	0.500	F	Keen Edge 3 Holes Counterbored Slanted Right	3	B12FD	\$73	\$91
12", HAF812SCSX, CG812SCX	11.875	2.250	0.500	B	3 Slots Double Edge	2	B12BC	\$76	\$97
	12.031	2.500	0.625	F	Keen Edge 2 Holes Counterbored		B12FE	\$127	\$192
1014,	14.000	2.875	0.750	F	Keen Edge 3 Holes Counterbored	3	B14F	\$107	\$160
1014,	14.000	2.875	0.750	B	4 Slots 2 Tapped Dowels	2	B14B	\$118	\$176
MD1216, CG1216SCSX, HAF1216C	16.000	2.880	0.750	F	Keen Edge 3 Holes Counterbored	3	B16FCB	\$178	\$221
M300, DK1216, M816, LB1216	16.000	2.875	0.750	F	Keen Edge 3 Holes Countersunk	3	B16FCS	\$178	\$221
M816, M300, LB1216, CG1216SCSX, HAF1216C, MD1216	16.000	2.062	0.750	B	5 Slots 2 Tapped Dowels	2	B16B	\$196	\$245

B

featuring the best of:

237

Northern Supply (800-365-6565) • Nickerson Machinery (800-821-9534) • OHS (Ontario-888-809-7050/Quebec-888-475-9224)

Granulator Knives

Replacement granulator knives, manufactured to precise tolerance to replace original equipment. Available in 2 grades of steel: OEM Steel: Standard 52100 steel formulation, which provides a good balance between wear and impact resistance. Recommended for beside-the-press-applications. Super Alloy: Premium grade D2 tool steel formulation, provides much longer life and is better suited to high usage cycles and tough materials. Greatly increases the time between sharpening. Ideal for heavy usage central grinding.



Make & Model	Length	Width	Thick-ness	Fly/Bed	Description	Qty/set	Part No.	Price Each	
								OEM	D2
BALL & JEWEL (cont...)									
1216, SPL	16.062	2.750	0.625	B	No Holes 2 Tapped Dowels	2	B16BB	\$138	\$206
MB520	17.125	3.312	0.750	B	8 Tapped Holes Holder		B17BB	\$138	\$206
MB250	17.000	3.687	0.750	F		2	B17F	\$139	\$210
MB250	17.000	2.750	0.750	B	4 Holes 2 Tapped Dowels	2	B17B	\$145	\$218
451,	19.990	3.125	0.500	F	Reverse Bevel 3 Holes		B20FB	\$156	\$232
CG1620SX, CG1620SCSX	20.000	2.750	0.750	B	6 Slots 2 Tapped Dowels Double Cutting Edge	2	B20BH	\$169	\$212
CG1620SX, CG1620SCSX	19.890	2.875	0.750	F	Keen Edge 4 Holes Counterbored Slanted Left		B20FL	\$181	\$227
CG1620SX, CG1620SCSX	19.890	2.875	0.750	F	Same as B20FL But Slanted Right		B20FR	\$181	\$227
CG1620SX, CG1620SCSX, (Can Use B20BH)	19.935	2.750	0.750	B	6 Slots 4 Tapped Dowels Double Cutting Edge	2	B19B	\$120	\$173
MD1640	20.000	4.000	0.875	B	2 Tapped Dowels	4	B20BJ	\$192	\$288
M400, M820, MD1620, MD1640	20.000	2.625	0.750	F	Keen Edge 3 Holes Countersunk	3	B20FE	\$167	\$251
M400, M820, MD1620	20.062	1.875	0.750	B	6 Slots	2	B20BD	\$194	\$292
	21.000	3.625	0.875	B	8 Slots 2 Tapped Dowels		B21BC	\$246	\$370
NO.1/2	20.062	3.250	0.500	F	Keen Edge 3 Holes	4	B21F	\$155	\$232
NO.1/2	20.375	2.375	0.437	B	2 Tapped Dowels	6	B21BD	\$178	\$268
	19.990	3.500	0.875	B	Keen Edge 6 Slots		B19BA	\$208	\$311
MD1220, MD1620	20.000	2.875	0.750	F	Keen Edge 3 Holes Counterbored	3	B20F	\$181	\$227
MD1620, MD1220	20.052	2.125	0.750	B	6 Slots 2 Tapped Dowels	2	B20BA	\$197	\$244
20", 1040, GK10022	20.062	2.875	0.750	F	Keen Edge 4 Holes Counterbored	3	B20FA	\$136	\$203
	21.000	4.250	0.875	B	8 Slots 2 Tapped Dowels	4	B21BE	\$246	\$392
NO.1	23.500	3.375	0.560	F	Reversed Bevel 3 Holes Counterbored		B23F	\$200	\$263
NO.1	23.875	2.507	0.531	B	2 Tapped Dowels	6	B23B	\$206	\$258
AS-24 STEEL	23.990	3.500	0.750	F	Keen Edge 9 Holes	5	B24F	\$216	\$325
STEELMSTR 24	24.000	4.000	0.875	B	9 Slots 2 Tapped Dowels	2	B24B	\$248	\$373
M500	23.990	2.875	0.750	F	Keen Edge 3 Holes Countersunk	3	B24FD	\$227	\$282
	24.052	2.875	0.750	F	Keen Edge 3 Holes Countersunk		B24FF	\$216	\$325
M500	24.062	2.000	0.750	B	6 Slots 3 Tapped Dowels	2	B24BB	\$230	\$346
M500, LT-1248-X	23.990	2.875	0.750	F	3 Holes Counterbored		B24FG	\$227	\$282

Granulator Knives



Make & Model	Length	Width	Thick-ness	Fly/Bed	Description	Qty/set	Part No.	Price Each	
								OEM	D2
BALL & JEWEL (cont...)									
NO.1.500, 5/SET	25.250	3.750	0.562	F	Reverse Bevel 3 Holes Counterbored	5	B25F	\$209	\$434
NO.1.500	25.375	3.250	0.500	B	No Holes 2 Tapped Dowels	6	B25BA	\$230	\$466
HD1652, HD1626	25.875	2.875	0.750	F	Keen Edge 7 Holes Counterbored		B26FE	\$252	\$374
HD1626	25.875	3.500	0.750	F	10 Holes	3-10	B26FC	\$252	\$374
HD1626	26.000	4.000	0.875	B	10 Slots 2 Tapped Dowels	4	B26BD	\$281	\$421
MD1626, 2026, MD1260, 5KN ROTOR	25.870	2.875	0.718	F	4 Holes (Alternate B26FF)	3	B26FA	\$252	\$374
MD1626, 2026, MD1260, CG2026SX	26.000	4.000	0.843	B	7 Slots 2 Tapped Dowels	2	B26B	\$262	\$323
HD1626	25.875	3.500	0.750	F	10 Holes	1	B26FB	\$252	\$374
HD1626	26.000	4.000	0.875	B	10 Slots 2 Tapped Dowels	1	B26BE	\$250	\$374
CG2026SX, HD1626	25.865	2.875	0.750	F	4 Holes Counterbored (see B26FB)		B26FF	\$244	\$307
	25.865	2.875	0.750	F	4 Holes Countersunk Keen Edge		B26FG	\$260	\$365
2-28,	26.740	5.250	0.875	F	3 Holes Counterbored Reverse Bevel		B26FD	\$342	\$456
2-28,	26.750	5.250	0.875	F	3 Holes Keen Edge	5	B26F	\$391	\$539
2-28,	26.875	4.750	0.875	B	2 Tapped Dowels	6	B26BA	\$314	\$420
1632,	31.875	2.875	0.750	F	Keen Edge 5 Holes Counterbored	3	B32F	\$280	\$408
1632,	32.000	4.000	0.875	B	5 Slots 2 Tapped Dowels		B32B	\$336	\$504
HDB 303SX	30.000	4.000	0.875	B	8 Slots	2	B30B	\$336	\$505
MD1640	19.990	2.625	0.750	F	Keen Edge 3 Holes Counterbored	3	B20FF	\$167	\$251
MD1640	24.000	2.750	0.750	B	6 Slots Single Bevel		B24BC	\$265	\$398
	23.563	3.625	0.750	F	6 Counterbored Holes Keen Edge		B24FH	\$253	\$380
CONAIR									
MGK400	6.650	2.580	0.470	F	Keen Edge 2 Slots		CR7F	\$95	\$130
MC-32	8.000	4.313	1.094	F	Reverse Bevel 2 Holes Counterbored	12	CR8F	\$244	\$365
MGK400.175	8.885	2.500	0.470	F	2 Slots High Shear		CR9F	\$86	\$130
MGK400.175	8.875	2.400	0.500	B	2 Slots		CR9BA	\$76	\$113
9X10, H6910, W450, (9723-15901)	9.000	2.500	0.875	F	Keen Edge 2 Holes Counterbored		CR9FA	\$77	\$115
9X10, H6910, W450	9.250	2.000	0.437	B	3 Slots	1	CR9B	\$73	\$110
8X10	9.500	2.000	0.500	F	Keen Edge 3 Holes Counterbored		CR10F	\$86	\$134
8X10	9.937	2.000	0.500	B	3 Slots		CR10B	\$85	\$127
12X14, 12X24, 712978	12.000	2.875	1.000	F	Keen Edge 2 Holes Counterbored	3	CR12F	\$113	\$169

B

featuring the best of:

239

Northern Supply (800-365-6565) • Nickerson Machinery (800-821-9534) • OHS (Ontario-888-809-7050/Quebec-888-475-9224)

Granulator Knives

Replacement granulator knives, manufactured to precise tolerance to replace original equipment. Available in 2 grades of steel: OEM Steel: Standard 52100 steel formulation, which provides a good balance between wear and impact resistance. Recommended for beside-the press-applications. Super Alloy: Premium grade D2 tool steel formulation, provides much longer life and is better suited to high usage cycles and tough materials. Greatly increases the time between sharpening. Ideal for heavy usage central grinding.



Make & Model	Length	Width	Thick-ness	Fly/Bed	Description	Qty/set	Part No.	Price Each	
								OEM	D2
CONAIR (cont...)									
12X14, 12X24, 712978	12.250	1.937	0.500	B	5 Holes	2	CR12BB	\$103	\$155
12X14	12.250	1.937	0.500	B	5 Slots		CR12BE	\$84	\$128
1412,	12.250	2.938	0.500	B	5 Slots		CR12B	\$84	\$126
14X20	20.000	2.875	1.000	F	Keen Edge 3 Holes Counterbored	3	CR20F	\$149	\$224
14X20	20.187	1.938	0.500	B	8 Slots	2	CR20B	\$104	\$179
16X24	12.052	1.937	0.500	B	2 Tapped Dowels		CR12BC	\$89	\$133
16X24	24.021	3.500	1.125	F	4 Holes Counterbored		CR24F	\$282	\$424
	24.021	3.500	1.125	F	Keen Edge 4 Holes Counterbored		CR24FB	\$282	\$424
G1630	29.500	3.445	1.102	F	4 Holes Counterbored		CR29F	\$360	\$512
G1630	30.187	3.000	0.500	B	12 Slots		CR30B	\$258	\$385
G1630	30.187	3.000	0.500	B	12 Slots Single Bevel		CR30BA	\$314	\$472
CUMBERLAND									
Chopper	4.156	1.250	0.375	B	2 Holes Tapped		CE4BA	\$40	\$84
# 0	4.500	1.500	0.375	F	Radial Rotor 3 Holes	3	CE4F	\$52	\$72
# 0	4.500	2.125	0.500	B	3 Slots	2	CE4B	\$52	\$72
24M	7.250	2.320	0.500	B	4 Slots		CE7BA	\$64	\$96
24M	7.000	2.750	0.500	F	3 Holes Counterbored		CR7FA	\$74	\$114
24M	24.365	3.312	0.625	B	7 Slots Reverse Bevel		CB24BC	\$287	\$394
#.500	7.500	1.500	0.375	F	Radial Rotor 4 Holes	2-3	CE7F	\$32	\$48
#.500	7.500	2.750	0.625	B	4 Slots	2	CE7B	\$59	\$89
184 SPL, 1010 Auger	9.938	2.750	0.500	F	Keen Edge 3 Holes Counterbored 2 Degree Angle Right Side		C10FA	\$64	\$95
184 SPL, 1010 Auger	10.250	2.375	0.500	B	3 Slots 2 Open Slots		C10BA	\$61	\$92
184 SPL, 1010 Auger	9.895	2.750	0.500	F	Reverse Bevel		C10FB	\$64	\$95
184 SPL, 1010 Auger	9.895	2.750	0.500	F	(C10FA with both ends angled)		C10FC	\$68	\$97
10,	9.750	2.750	0.625	B	4 Slots	2	C10B	\$83	\$119
10,	9.937	2.000	0.375	F	Keen Edge 4 Holes		C10F	\$58	\$80
185, 710, 810, 1, 190, 184	10.000	2.839	0.500	F	Keen Edge 3 Holes Counterbored	2	CA10FB	\$74	\$114
810, 184, 710	9.990	2.739	0.500	F	Keen Edge 3 Holes Counterbored		C10FD	\$74	\$114
185, 710, 810, 1, 190, 184	10.250	2.062	0.500	B	3 Slots 2 Open Holes	2	CA10B	\$59	\$88
185, 710, 810, 1, 190, 184	10.000	2.750	0.500	F	Reverse Bevel 3 Counterbored Holes	2	CA10FA	\$59	\$89
185, 710, 810, 1, 190, 184	10.250	2.250	0.500	B	3 Slots 2 Open Holes	2	C11B	\$59	\$88

Granulator Knives



Make & Model	Length	Width	Thick-ness	Fly/Bed	Description	Qty/set	Part No.	Price Each	
								OEM	D2
CUMBERLAND (cont...)									
185, 710, 810, 1, 190, 184	9.740	2.839	0.500	F	Keen Edge 3 Holes Counterbored		CA10FC	\$59	\$89
185, 710, 810, 1, 190, 184	10.250	2.063	0.500	B	3 Slots 2 Open Holes		CA10BA	\$59	\$88
#1.500, Chevron	10.500	2.125	0.500	F	Radial Rotor 5 Holes	5	CE10F	\$38	\$59
#1.500, Chevron	10.500	2.531	0.625	B	5 Slots	2	CE10B	\$78	\$116
812 (NEW)	11.875	2.375	0.437	F	Reverse Bevel 3 Holes 3 Degree Angle Right Side		C12FF	\$85	\$101
812 (NEW)	11.875	2.375	0.438	F	Keen Edge 3 Holes		C12FG	\$78	\$92
812 (NEW)	12.062	1.938	0.500	B	3 Slots Double Cutting Edge		CA12C	\$78	\$128
284, 285	12.000	2.750	0.500	F	Keen Edge 4 Holes Counterbored (Same as C11FA except for angle)		C11F	\$78	\$118
284, 285	12.000	2.839	0.500	F	Keen Edge 4 Holes Counterbored (Same as C11F Except 4 Degree Angle Right Shear)		C11FA	\$78	\$128
284, 285	12.000	2.839	0.500	F	Keen Edge 4 Holes Counterbored (Same as CA12FC Except Hole Size .625)	3	C12F	\$78	\$118
284,	12.000	2.839	0.500	F	Reverse Bevel 4 Holes Counterbored 4 Degree Right Side		C12FH	\$86	\$130
284,	12.240	2.750	0.500	B	4 Slots 2 Open Slots No Bevel		C12BA	\$72	\$109
284,	11.943	2.750	0.500	F	4 Counterbored Holes Reverse Bevel		C11FB	\$86	\$130
284, 285, 2 UC	11.943	2.750	0.500	F	Reverse Bevel 4 Holes Counterbored (Same as CA12FC Except 4° Angle Right Side)	3	C12FK	\$78	\$118
284, 285, 1012, Use For 2 KN Rotor (See C12B For 3KN Rotor)	12.240	2.750	0.500	B	4 Slots 2 Open Holes Notches Centered	2	C12BF	\$72	\$109
284, 285, 1212, Gran 2KN Use With 3KN Rotor	12.240	2.570	0.500	B	4 Slots 2 Open Holes		C12B	\$72	\$109
284, 285, 1212	11.935	2.741	0.375	F	Reverse Bevel 4 holes 4 degrees right side		C12FM	\$77	\$114
	11.937	2.750	0.375	F	Reverse Bevel 4 Holes 4 Degree Right Side		C12FJ	\$76	\$112
812, 1012, 2, 290, 780	12.000	2.750	0.500	F	Reverse Bevel 5 Holes Counterbored	2	CA12FA	\$78	\$118

B

featuring the best of:

241

Northern Supply (800-365-6565) • Nickerson Machinery (800-821-9534) • OHS (Ontario-888-809-7050/Quebec-888-475-9224)

Granulator Knives

Replacement granulator knives, manufactured to precise tolerance to replace original equipment. Available in 2 grades of steel: OEM Steel: Standard 52100 steel formulation, which provides a good balance between wear and impact resistance. Recommended for beside-the press-applications. Super Alloy: Premium grade D2 tool steel formulation, provides much longer life and is better suited to high usage cycles and tough materials. Greatly increases the time between sharpening. Ideal for heavy usage central grinding.



Make & Model	Length	Width	Thick-ness	Fly/Bed	Description	Qty/set	Part No.	Price Each	
								OEM	D2
CUMBERLAND (cont...)									
812, 1012, 2, 290, 780, 285	12.000	2.843	0.500	F	Keen Edge 5 Holes Counterbored	2	CA12FB	\$78	\$118
812, 1012, 2, 290, 780	12.000	2.750	0.500	F	Reverse Bevel 4 Holes Counterbored (Same as C12FI Except No Angle)	3	CA12FC	\$85	\$128
1212, PI	12.188	2.750	0.511	F	Double Cutting Edge 4 Slots		C13FA	\$109	\$152
812, 1012, 2, 290, 780, 6B	11.965	2.000	0.500	B	4 Slots		CA12BA	\$102	\$152
812, 1012, 2, 290, 780	12.000	2.828	0.500	F	Keen Edge 4 Holes Counterbored (Same as C12F except hole size .593)	3	CA12FD	\$78	\$118
	12.240	2.125	0.500	B	4 Slots 2 Open Slots notches not centered		CA12BB	\$104	\$156
812, 1012, 2, 290, 780	12.000	2.062	0.500	F	Radial Rotor 5 Holes	3	C12FB	\$78	\$118
812, 1012, 2, 285, 290, 780, (3KN), 2UC	12.250	2.125	0.500	B	4 Slots	2	CA12B	\$80	\$121
78, 780	12.450	2.375	0.500	B	5 Slots		C12BC	\$104	\$156
384, 1215	15.250	2.750	0.437	F	Keen Edge 4 Holes		C16FD	\$133	\$200
384, 1215	15.500	2.562	0.500	B	5 Slots 2 Notches		C16BD	\$139	\$209
484, SPL	7.968	3.281	0.500	F	Right Hand Keen Edge 2 Holes Counterbored (Hole to Back 1.406)		C7FR	\$91	\$136
484, SPL	7.969	3.281	0.500	F	Left Hand Keen Edge 2 Holes Counterbored (Hole to Back 1.406)		C7FL	\$91	\$136
484, SPL	7.969	3.281	0.500	F	Left Hand Keen Edge 2 Holes Counterbored (Hole to Back 1.308)		C7FLA	\$91	\$136
484 SPL, Chevron	8.093	2.750	0.500	B	2 Slots		C8BA	\$54	\$80
484,	15.927	3.218	0.500	F	Reverse Bevel 4 Holes Counterbored Slant Right .562 H		C16FE	\$85	\$128
484, See C15F Fly	16.250	2.750	0.500	B	5 Slots No Bevel	2	CA16BA	\$94	\$128
484,	15.927	3.375	0.500	F	Keen Edge 4 Holes Counterbored Slant Right .656 H		C15F	\$102	\$152
484-3KN	15.937	3.268	0.500	F	Knife Reverse Bevel 4 Holes Counterbored		C16FF	\$96	\$144

Granulator Knives



Make & Model	Length	Width	Thick-ness	Fly/Bed	Description	Qty/set	Part No.	Price Each	
								OEM	D2
CUMBERLAND (cont...)									
484 Twinshear	7.947	3.250	0.500	F	Rt. Hand Reverse Bevel 2 Holes Counterbored (Angle Right)		C8FR	\$59	\$89
484 Twinshear	7.947	3.250	0.500	F	Left Hand Reverse Bevel 2 Holes Counterbored (Angle Left)		C8FL	\$59	\$89
816, 1016, 3	16.000	2.750	0.500	F	Reverse Bevel 6 Holes Counterbored C-C 2.750, C-B 1.125	2	C16FA	\$116	\$175
816, 1016, 3	16.000	2.839	0.500	F	Keen Edge 6 Holes Counterbored C-C 2.687 C-B 1.312	2	C16F	\$116	\$175
816, 1016, 3	16.250	2.125	0.500	B	5 Slots	2	C16B	\$109	\$163
1216,	16.052	3.171	0.500	F	Keen Edge 4 Holes Counterbored	3	C16FB	\$95	\$142
1216, see CA16B	16.177	2.500	0.500	B	5 Slots 2 Open Holes	2	C16BA	\$86	\$152
1216,	16.250	2.500	0.500	B	5 Slots 2 Open Holes	2	C16BB	\$112	\$168
1416, 4, 490, 485	16.000	3.250	0.500	F	Reverse Bevel 4 Holes Counterbored	3	CA16FC	\$95	\$142
1416, 4, 490, 485, 1216	16.000	3.312	0.500	F	Keen Edge 6 Holes Counterbored C-C 2.687, C-B 1.312	2	CA16FB	\$95	\$142
1416, 4, 490, 485	16.000	3.250	0.500	F	Reverse Bevel 6 Holes Counterbored C-C 2.687, C-B 1.312	2	CA16FA	\$95	\$142
1416, 4, 490, 485	16.000	3.312	0.500	F	Keen Edge 4 Holes Counterbored	3	CA16FD	\$95	\$142
4, 6	2.000	3.313	0.500	F	2 Holes Counterbored	32	C2F	\$34	\$50
1416, 4, 490, 485, 1216	16.250	2.812	0.500	B	5 Slots 2 Open Holes Longer Slots (2.750 C-C) Use C16BA	2	CA16B	\$86	\$131
	16.250	2.812	0.500	B	5 Slots 2 Open Holes	2	CA16BB	\$112	\$167
18,	17.750	1.875	0.500	F	Radial Rotor 6 Holes	5	CC17F	\$88	\$132
18,	18.000	2.875	0.625	B	6 Slots 2 Tapped Dowels	2	CC17B	\$103	\$155
584, Chevron, Twinshear	9.897	3.312	0.500	F	Keen Edge Right Hand 3 Holes Counterbored	3	C10FR	\$62	\$94
584, Chevron, Twinshear	9.897	3.312	0.500	F	Keen Edge Left Hand 3 Holes Counterbored	3	C10FL	\$62	\$94
584, Chevron	10.062	2.750	0.500	B	3 Slots	3	CA10BB	\$71	\$106
584, 585	20.000	3.125	0.500	F	Reverse Bevel 7 Holes Counterbored		CA20FD	\$112	\$168
584, 585 (R/B is CA20FH)	19.990	3.220	0.500	F	Keen Edge 5 Holes Counterbored (Angle Right)	3	CA20FE	\$132	\$200
584, 585	20.250	2.750	0.500	B	With 7 Slots 3 Notches		CA20BB	\$121	\$182

B

featuring the best of:

243

Northern Supply (800-365-6565) • Nickerson Machinery (800-821-9534) • OHS (Ontario-888-809-7050/Quebec-888-475-9224)

Granulator Knives

Replacement granulator knives, manufactured to precise tolerance to replace original equipment. Available in 2 grades of steel: OEM Steel: Standard 52100 steel formulation, which provides a good balance between wear and impact resistance. Recommended for beside-the press-applications. Super Alloy: Premium grade D2 tool steel formulation, provides much longer life and is better suited to high usage cycles and tough materials. Greatly increases the time between sharpening. Ideal for heavy usage central grinding.



Make & Model	Length	Width	Thick-ness	Fly/Bed	Description	Qty/set	Part No.	Price Each	
								OEM	D2
CUMBERLAND (cont...)									
584,	20.250	2.750	0.500	B	7 Slots No Bevel		CA20BA	\$112	\$168
584,	20.000	3.220	0.375	F	5 Holes Reverse Bevel Short On Right Side		CA20FF	\$100	\$149
584, 585	20.240	2.750	0.500	B	7 Slots No Bevel	2-3	CA20BE	\$112	\$168
584, 585	20.000	3.187	0.500	F	Keen Edge 7 Holes Counterbored		CA20FG	\$112	\$168
584, 585	20.240	2.750	0.500	B	Keen Edge 7 Slots		CA20BC	\$116	\$175
584, 585	20.000	3.220	0.500	F	Reverse Bevel 5 Holes Counterbored Angle Rt. (Same as CA20FE Keen Edge)		CA20FH	\$132	\$200
X1000	20.000	4.291	0.750	F	Left Hand Reverse Bevel 4 Holes	3	CA20AL	\$240	\$440
X1000	20.000	4.291	0.750	F	Rt. Hand Reverse Bevel 4 Holes	3	CA20AR	\$240	\$440
1220, 1420, 5, 14 X12	20.000	2.967	0.620	F	Reverse Bevel 7 Holes Counterbored		CA20FK	\$112	\$168
1220, 1420, 5, 14 X 12	20.000	3.050	0.870	B	7 Slots 2 Tapped Holes		CA20BD	\$121	\$168
1220, 1420, 5, 14 X 12	20.000	3.000	0.500	F	Reverse Bevel 7 Holes Counterbored	2	CA20FA	\$112	\$168
1220, 1420, 5, 14 X 12, 585	19.990	3.220	0.500	F	Reverse Bevel 5 Holes Counterbored	2	CA20FB	\$132	\$200
1220, 1420, 5, 14 X 12	20.250	2.812	0.500	B	7 Slots 3 Open Holes	2	CA20B	\$116	\$176
1420, 585, 5, 1220, 14 X 12	20.000	3.250	0.500	F	Keen Edge 5 Holes Counterbored		CA20FC	\$132	\$200
1220, 1420, 5, 14 X12	20.000	3.312	0.500	F	Keen Edge 5 Holes Counterbored	6-10 -14	CA20FJ	\$112	\$168
20,	20.000	2.312	0.625	F	Keen Edge		C20A	\$154	\$154
20,	20.000	2.320	0.625	F	Radial Rotor 7 Holes	3-5-7	CC20F	\$154	\$232
20,	19.970	3.375	0.875	B	7 Slots 2 Tapped Holes (15 Bevel)		CC20B	\$112	\$168
	19.970	3.375	0.875	B	7 Slots 2 Tapped Holes (8 Bevel)		CC20BA	\$112	\$168
20, 1837	20.000	2.031	1.250	F	Hook Fly 7 Holes		C20FE	\$230	\$346
20, (Old)	20.000	3.250	0.625	F	7 Holes		CC20FA	\$169	\$254
18, 37, 20	28.750	3.312	0.656	F	Reverse Bevel 4 Holes		C29F	\$158	\$232
1524-24	24.000	2.812	0.625	F	Radial Rotor 8 Holes (15 Degree)	3-5	CB24FA	\$148	\$222
1524-24	24.375	3.312	0.625	B	7 Slots 2 Tapped Dowels 3/4" Slot	2	CB24BC	\$169	\$256

Granulator Knives



Make & Model	Length	Width	Thick-ness	Fly/Bed	Description	Qty/set	Part No.	Price Each	
								OEM	D2
CUMBERLAND (cont...)									
	24.000	3.344	0.625	F	Radial Rotor 5 Holes Counterbored		CB24FC	\$148	\$222
1524-24 #80, 24B-MED	24.000	3.250	0.625	F	Reverse Bevel 5 Holes Counterbored	3-5	C23FE	\$169	\$256
1524-24, #80	24.000	3.343	0.625	F	Keen Edge 5 Holes Counterbored	3-5	CB24F	\$169	\$148
1524,	23.990	2.812	0.625	F	Radial Rotor 8 Holes (8 Degree)	3-5	CB24FD	n/a	\$222
1524,	24.365	3.312	0.625	B	7 Slots 2 Tapped Dowels 3/4 Slot 8 Degree		CB24B	\$148	\$222
1524,	24.365	3.312	0.625	B	7 Slots 2 Tapped Dowels 7/8" Slot	2	CB24BA	\$162	\$244
#80, #80-85	25.000	2.875	0.500	B	7 Slots		C24B	\$170	\$257
1524, #80, #80-85	24.000	3.250	0.625	F	Reverse Bevel 5 Holes		CB24FB	\$148	\$222
24B	24.000	3.625	0.875	F	Reverse Bevel 5 Holes Counterbored		C24FC	\$148	\$222
24B	24.375	3.000	0.625	B	7 Slots 2 Tapped Dowels		C25B	\$169	\$256
24 HS Rotor	24.000	3.625	0.875	F	Reverse Bevel 5 Holes Counterbored		C24FF	\$206	\$312
2415, HOG	24.365	3.812	0.625	B	7 Slots 2 Tapped Dowels		C24BA	\$252	\$378
2415, HOG	12.000	2.785	0.500	F	4 Holes Counterbored Reverse Bevel		C12FC	\$100	\$152
24 RR, 1524	24.000	2.750	1.125	F	Hook Fly 8 Holes Radial Rotor		C24FE	\$364	\$546
1426-l	13.160	3.437	0.625	F	Reverse Bevel Left Hand 3 Holes Counterbored	3	C13FL	\$112	\$168
1426-l, 1-5 CUT/BLWR	13.170	3.437	0.625	F	Reverse Bevel Rt. Hand 3 Holes Counterbored	3	C13FR	\$112	\$168
1426-l	13.170	3.437	0.625	F	Keen Edge Left Hand 3 Holes Counterbored		C13FLA	\$112	\$163
1426-l	13.170	3.437	0.625	F	(Same as C13FLA) Keen Edge Right Hand 3 Holes Counterbored		C13FRA	\$112	\$163
1426-l	13.177	2.531	0.500	B	3 Slots	4	CA13BA	\$109	\$144
1426-l	13.063	2.750	0.510	B	3 Slots No Bevel		CA13BB	\$114	\$172
684, 1426	13.093	3.250	0.500	F	Rt. Hand Reverse Bevel 3 Holes Counterbored	2	C13FAR	\$132	\$200
684, 1426	13.093	3.250	0.500	F	Left Hand Reverse Bevel 3 Holes Counterbored	2	C13FAL	\$132	\$200
684, 1426, 284	13.187	3.250	0.500	F	Right Hand Keen Edge 3 Holes Counterbored	3	CA13FR	\$132	\$200
684, 1426, 284	13.175	3.250	0.500	F	Left Hand Keen Edge 3 Holes Counterbored	3	CA13FL	\$132	\$200

B

featuring the best of:

245

Northern Supply (800-365-6565) • Nickerson Machinery (800-821-9534) • OHS (Ontario-888-809-7050/Quebec-888-475-9224)

Granulator Knives

Replacement granulator knives, manufactured to precise tolerance to replace original equipment. Available in 2 grades of steel: OEM Steel: Standard 52100 steel formulation, which provides a good balance between wear and impact resistance. Recommended for beside-the-press-applications. Super Alloy: Premium grade D2 tool steel formulation, provides much longer life and is better suited to high usage cycles and tough materials. Greatly increases the time between sharpening. Ideal for heavy usage central grinding.



Make & Model	Length	Width	Thick-ness	Fly/Bed	Description	Qty/set	Part No.	Price Each	
								OEM	D2
CUMBERLAND (cont...)									
684 Special	13.175	3.250	0.500	F	Keen Edge 35 Counterbored Left Hand Slots		CA13LA	\$161	\$241
684 Special	13.175	3.250	0.500	F	Keen Edge 35 Counterbored Right Hand Slots		CA13RA	\$161	\$241
684, 1426	13.175	2.781	0.500	B	3 Slots No Bevel	4	CA13B	\$112	\$168
1426, HOG, 3250	25.125	3.812	0.875	B	6 Slots 2 Tapped Dowels 2 Holes		C26B	\$200	\$301
3250,	11.250	4.312	1.250	F	Keen Edge 4 Holes Counterbored	25	C12BB	\$144	\$210
2815H, 28H	5.365	4.023	1.187	F	Reverse Bevel 2 Holes Counterbored		C6F	\$104	\$136
1836, 1836 I	11.990	3.793	0.500	F	Reverse Bevel 3 Holes	9	C12FL	\$96	\$152
1836, 1836 I	12.130	3.870	0.500	B	Double 4 Slots Cutting Edge	6	C12BD	\$109	\$160
1836,	31.500	4.000	1.125	F	Low Shear 10 Holes	9	C32F	\$308	\$460
1836,	32.000	4.500	1.125	B	10 Open Slots	6	C32B	\$420	\$624
1828-28	13.990	2.703	1.100	F	Hook Fly 5 Holes		C14F	\$160	\$240
1828-28	13.937	3.312	0.500	F	Radial Rotor 5 Slots	6	CB28FA	\$121	\$184
	27.990	4.291	0.750	F	Reverse Bevel 5 Holes Counterbored	3-5	C28FB	\$204	\$306
1828-28	28.000	4.339	0.750	F	Keen Edge 5 Holes (Most Popular)	3-5	CB28F	\$222	\$336
1828-28	18.500	4.219	0.750	F	Reverse Bevel 6 Holes		C19FA	\$145	\$218
1828-28, 28B	28.312	3.812	0.875	B	8 Slots 3 Tapped Dowels (Most Popular)	2	CB28B	\$232	\$312
	18.522	4.125	1.125	F	Reverse Bevel 4 Holes Counterbored		C19FB	\$186	\$278
1828-28, 28B	28.000	4.338	1.125	F	Reverse Bevel 5 Holes Counterbored		C28FC	\$379	\$569
1828-28	13.990	3.312	1.100	F	Hook Fly 5 Holes		C14HF	\$160	n/a
24H	20.875	3.312	1.187	F	5 Holes Counterbored Reverse Bevel		C20FG	\$418	\$632
24H	20.875	3.312	1.187	F	Reverse Bevel 5 Holes Counterbored Notched		C20FJ	\$475	\$608
24T	6.250	2.875	0.500	F	Keen Edge 2 Holes Right Hand		C6FR	n/a	\$84
24T	6.250	2.875	0.500	F	Keen Edge 2 Holes Left Hand		C6FL	n/a	\$84
24T	25.000	2.834	0.500	F	Keen Edge 6 Holes		C25F	\$276	\$420
24T	26.413	2.795	0.500	B	6 Slots 2 Tapped Dowels		C27B	\$288	\$444

Granulator Knives



Make & Model	Length	Width	Thick-ness	Fly/Bed	Description	Qty/set	Part No.	Price Each	
								OEM	D2
CUMBERLAND (cont...)									
24x28	14.133	3.307	0.593	B	Right Hand 4 Slots 2 Tapped Holes		C14BR	\$180	\$270
24x28	14.133	3.307	0.593	B	Left Hand 4 Slots 2 Tapped Holes		C14BL	\$180	\$270
24x28 CHEVRON	14.082	4.238	0.750	F	Reverse Bevel 3 Holes LH Counterbored		C14FAL	\$149	\$223
24x28	14.156	4.238	0.750	F	High Shear Left Hand 3 Holes Counterbored Slants Left	3	C15FAL	\$149	\$223
24x28 (See C14FAR)	14.156	4.238	0.750	F	High Shear Right Hand 3 Holes Counterbored Slants Left	3	C15FAR	\$149	\$223
24x28 CHEVRON	14.082	4.238	0.750	F	Reverse Bevel Rt. Hand 3 Holes Counterbored Slants Right		C14FAR	\$149	\$223
24x28	14.000	4.238	0.750	F	Reverse Bevel 3 Holes Counterbored Rt. Hand		C14FBR	\$162	\$244
24x28	14.000	4.238	0.750	F	Reverse Bevel 3 Holes Counterbored Left Hand		C14FBL	\$149	\$244
#30	15.000	2.875	0.625	F	Radial Rotor 5 Holes	6-10	CC15FB	\$89	\$101
#30	15.032	2.781	1.125	F	Hook Fly 5 Holes		C16HF	\$245	\$367
#30	15.062	4.250	0.750	F	Keen Edge 5 Holes Counterbored	6-10	CC15F	\$122	\$150
#30	15.062	2.875	0.750	F	Keen Edge 5 Holes Countersunk	4	CC15FA	\$122	\$150
#30	15.187	3.812	0.875	B	5 Slots 2 Tapped Dowels	4	CC15B	\$137	\$208
#30	15.187	3.812	0.875	B	5 Slots 2 Tapped Holes		CC15BA	\$137	\$208
30,	15.748	3.268	0.669	F	Keen Edge 4 Holes Counterbored		CC15BB	\$149	\$223
30T	15.313	3.303	0.671	F	Keen Edge 4 Holes Counterbored		CC15BC	\$112	\$167
	16.000	2.763	0.617	B	4 Slots		CC15BD	\$134	\$202
30T	16.250	2.812	0.500	B	5 Slots		CA17B	\$112	\$167
30T, 56T	28.500	3.312	0.688	F	Reverse Bevel Left Hand 6 Holes Counterbored		C28FBL	\$269	\$402
30T, 56T	28.500	3.312	0.688	F	Reverse Bevel Rt. Hand 6 Holes Counterbored		C28FBR	\$269	\$402
4284,	15.927	3.218	0.375	F	4 Holes Slant On Rt. Side Reverse Bevel		C16FG	\$89	\$96
30T, 56T	28.490	3.307	0.687	F	Keen Edge Right Hand 6 Holes Counterbored		C28FAR	\$269	\$402
30T, 56T	28.500	3.307	0.687	F	Keen Edge Left Hand 6 Holes Counterbored		C28FAL	\$269	\$402
30T, 56T	29.000	2.750	0.625	B	6 Slots 2 Tapped Dowels		C29B	\$212	\$316

B

featuring the best of:

247

Northern Supply (800-365-6565) • Nickerson Machinery (800-821-9534) • OHS (Ontario-888-809-7050/Quebec-888-475-9224)

Granulator Knives

Replacement granulator knives, manufactured to precise tolerance to replace original equipment. Available in 2 grades of steel: OEM Steel: Standard 52100 steel formulation, which provides a good balance between wear and impact resistance. Recommended for beside-the press-applications. Super Alloy: Premium grade D2 tool steel formulation, provides much longer life and is better suited to high usage cycles and tough materials. Greatly increases the time between sharpening. Ideal for heavy usage central grinding.



Make & Model	Length	Width	Thick-ness	Fly/Bed	Description	Qty/set	Part No.	Price Each	
								OEM	D2
CUMBERLAND (cont...)									
56T	28.937	2.720	0.625	B	Right Hand 6 Slots 2 Tapped Dowels		C29BR	\$510	\$744
56T	28.937	2.765	0.625	B	Left Hand 6 Slots 2 Tapped Dowels		C29BL	\$510	\$744
56T	19.312	2.765	0.619	B	4 Slots 2 Tapped Holes No Bevel		C20B	\$198	\$296
1837,	18.500	3.312	0.500	F	(No Bevel) 6 Slots	6-10 -14	C19FC	\$149	\$223
	18.500	3.750	0.750	F	Radial Rotor 6 Holes		C19RR	\$168	\$252
1837,	18.490	3.312	0.500	F	6 Slots 8 Bevel	6-10 -14	C19FD	\$149	\$223
	18.552	4.312	1.125	F	Right Hand 4 Holes Counterbored Reverse Bevel		C18RB	\$186	\$278
1837-37, 8185, (3KN ROTOR), 37H, 37B	18.562	4.239	0.750	F	Right Hand Keen Edge 4 Holes Counterbored	5-6 -10	C18FAR	\$158	\$240
1837-37, 8185, (3KN ROTOR), 37H, 37B	18.562	4.239	0.750	F	Left Hand Keen Edge 4 Holes Counterbored	5-6 -10	C18FAL	\$158	\$240
1837-37, 37H, 8185	18.562	4.234	0.750	F	Reverse Bevel 4 Holes Counterbored Rt. Hand (Bigger CB)		C18FBR	\$158	\$240
1837-37	17.625	4.239	0.750	F	Reverse Bevel 4 Holes Counterbored		C18FA	\$132	\$200
1837-37, 37H, 8185	18.562	4.234	0.750	F	Reverse Bevel 4 Holes Counterbored Left Hand (Bigger CB)		C18FBL	\$158	\$240
37,	18.562	4.340	0.750	F	Low Shear 4 Holes Counterbored		CB18FD	\$157	\$230
1837,	18.500	2.547	1.016	F	Hook Fly 6 Holes		CB18HF	\$208	\$312
1737-37, 37H, 37B	18.750	3.812	0.875	B	5 Slots 2 Tapped Dowels (33 Degree Downstroke)	4-5 -6-10	CB18BA	\$162	\$224
	12.140	2.240	0.500	B	4 Slots Open 50 Degree Bevel		C12BE	\$114	\$170
1837-37	18.740	3.812	0.875	B	Reverse Bevel 5 Slots 2 Tapped Dowels Downstroke		CB18B	\$155	\$233
37B, 37, HOG	18.552	4.312	1.125	F	Left Hand 4 Holes Counterbored Reverse Bevel	6	CB18FL	\$264	\$400

Granulator Knives



Make & Model	Length	Width	Thick-ness	Fly/Bed	Description	Qty/set	Part No.	Price Each	
								OEM	D2
CUMBERLAND (cont...)									
	18.562	4.320	1.125	F	Left Hand, 4 Counterbored Holes, Reverse Bevel		CB19FL	\$230	\$346
	18.562	4.320	1.125	F	Right Hand, 4 Holes Counterbored Reverse Bevel		CB19FR	\$230	\$346
37B	18.552	4.312	1.125	F	Reverse Bevel Rt. Hand 4 Holes Counterbored		CB18FR	\$264	\$400
37, HOG	7.250	3.687	1.187	F	3 Holes Counterbored		C7FA	\$132	\$200
37, HOG	18.740	4.253	0.875	B	5 Slots 2 Tapped Dowels (8 Degree Upstroke)		C18BD	\$144	\$216
1462, 37H	7.250	3.700	1.186	F	Reverse Bevel 3 Holes Counterbored		C7FB	\$133	\$184
1462, 37H	18.688	3.750	0.875	B	Reverse Bevel 5 Slots Tapped Dowels Downstroke		CB18BF	n/a	\$352
1462, 37H	18.688	4.250	0.875	B	5 Slots Tapped Dowels Downstroke		CB18BB	\$246	\$344
37F	33.865	3.615	1.375	F	Hook Fly 8 Holes Counterbored	8	C34HF	\$552	\$828
37,	18.562	4.340	0.750	F	4 Holes Counterbored Reverse Bevel		CB18FC	\$264	\$400
3715,	7.240	3.953	1.187	F	3 Holes Counterbored		C7FC	\$972	\$146
	18.740	4.250	0.875	B	5 Slots 2 Tapped Dowels		CB18BC	\$158	\$238
3715H	18.750	3.468	0.875	B	6 Slots 2 Tapped Dowels		CB18BD	\$160	\$239
1462	30.630	4.250	1.093	F	Reverse Bevel Rt. Hand 6 Holes Counterbored		CB31F	\$371	\$557
1462,	15.968	4.250	0.787	B	5 Slots 2 Tapped Dowels		C15B	\$119	\$179
43,	21.500	3.000	0.813	F	Radial Rotor 6 Holes	6	CC21FA	\$104	\$156
43,	21.687	3.812	0.875	B	6 Slots 2 Tapped Holes		CC21B	\$104	\$196
5018,	8.110	3.687	1.187	F	3 Holes	36	C8F	\$144	\$216
	25.000	3.165	0.500	F	No Bevel 8 Slots (RC 59-61)		C25FA	\$172	\$257
50H	8.125	3.687	1.187	F	Reverse Bevel 3 Holes Counterbored		C8FA	\$143	\$216
50F	25.187	3.812	1.375	B	6 Slots 2 Tapped Holes		C25BC	\$262	\$496
50F	23.000	3.312	1.187	F	Left Hand Reverse Bevel 5 Holes Counterbored		C23FAL	\$280	\$420
50F	23.000	3.312	1.187	F	Rt. Hand Reverse Bevel 5 Holes Counterbored		C23FAR	\$280	\$420
12x24	23.000	2.812	0.625	F	Keen Edge 9 Holes		C23FB	\$169	\$374
12x24	23.937	3.125	0.875	B	8 Slots 2 Tapped Dowels		C23BB	\$292	\$438
50F	23.000	3.312	1.187	F	C23FAL notched		C23FNL	\$427	\$598
50F	23.000	3.312	1.187	F	C23FAR notched		C23FNR	\$427	\$598

B

featuring the best of:

249

Northern Supply (800-365-6565) • Nickerson Machinery (800-821-9534) • OHS (Ontario-888-809-7050/Quebec-888-475-9224)

Granulator Knives

Replacement granulator knives, manufactured to precise tolerance to replace original equipment. Available in 2 grades of steel: OEM Steel: Standard 52100 steel formulation, which provides a good balance between wear and impact resistance. Recommended for beside-the press-applications. Super Alloy: Premium grade D2 tool steel formulation, provides much longer life and is better suited to high usage cycles and tough materials. Greatly increases the time between sharpening. Ideal for heavy usage central grinding.



Make & Model	Length	Width	Thick-ness	Fly/Bed	Description	Qty/set	Part No.	Price Each	
								OEM	D2
CUMBERLAND (cont...)									
2050-50	25.000	4.250	0.750	F	Reverse Bevel 5 Holes Counterbored	6-10 -14	CB25F	\$178	\$266
2050-50, 50T	25.000	3.312	0.500	F	8 Slots Radial Rotor No Bevel	6-10 -14	CB25FA	\$185	\$200
2050-50	25.000	4.312	0.750	F	Keen Edge 5 Holes Counterbored	6-10 -14	CB25FD	\$227	\$344
2050-50, 50B, 50H, 50T	25.187	3.812	0.875	F	6 Slots (Upstroke) 2 Tapped Dowels (Use with K26500) Keen Edge Style	4	CB25B	\$185	\$280
	25.000	4.588	1.125	F	5 Holes Counterbored Reverse Bevel		CB25RBA	\$428	\$552
2050,	25.125	3.810	0.880	B	6 Slots 2 Tapped Dowels	4	CB25BA	\$184	\$232
50,	25.000	4.465	0.625	F	Keen Edge 5 Holes Counterboard Rt. Hand		C25FAR	\$259	\$389
50,	25.000	4.465	0.625	F	Keen Edge 5 Holes Counterboard		C25FAL	\$259	\$389
2050B, 50B	25.000	4.375	1.125	F	Reverse Bevel 5 Holes Counterbored High Shear Rotor		C24FD	\$418	\$632
2050-50, 50H	25.146	3.815	0.875	B	(Downstroke) 6 Slots 2 Tapped Dowels (Use with CB25B) Reverse Bevel Style		C24BB	\$180	\$271
50B	25.000	4.320	1.125	F	5 Counterbored Holes Reverse Bevel		C24FG	\$342	\$512
	27.990	4.291	0.750	F	5 Counterbored Holes Keen Edge		C28FD	\$274	\$413
1456,	28.713	4.335	0.787	F	Keen Edge Right Hand 6 Holes Counterbored	3	C28FR	\$287	\$430
1456,	28.713	4.335	0.787	F	Keen Edge Left Hand 6 Holes Counterbored	3	C28FL	\$287	\$430
1456,	28.927	4.125	0.750	B	6 Slots 2 Tapped Dowels	4	C29BA	\$326	\$491
66T	34.048	2.772	0.625	B	6 Slots 2 Tapped Dowels		CA34B	\$346	\$484
66T	33.559	3.290	0.687	F	7 Holes Counterbored		CA34F	\$404	\$566
	9.937	1.625	0.375	F	4 Holes Keen Edge		CA10F	\$91	\$138

Granulator Knives



Make & Model	Length	Width	Thick-ness	Fly/Bed	Description	Qty/set	Part No.	Price Each	
								OEM	D2
FLINCHBAUGH									
57,	6.500	2.375	0.437	F	3 Holes Keen Edge	2	L7F	\$49	\$73
79,	9.000	2.375	0.437	F	High Shear 5 Holes	2	L9F	\$76	\$113
79,	9.000	1.437	0.375	B	5 Open Slots	2	L9B	\$76	\$113
911,	11.000	2.875	0.562	F	High Shear 6 Holes		L11F	\$90	\$134
911,	11.000	2.875	0.562	F	Reverse Bevel 6 Holes	2	L11FA	\$90	\$134
911,	11.000	1.875	0.500	B	5 Open Slots	2	L11B	\$95	\$143
1425 HOG	12.000	3.875	0.937	F	Keen Edge 4 Holes	6	L24F	\$157	\$302
1425 HOG	12.490	3.875	0.937	B	4 Open Slots	4	L24B	\$251	\$284
1437, 1425, 1850	12.250	3.875	0.687	F	Keen Edge 3 Holes	6	L25F	\$193	\$244
1437, 1425, 1856	12.490	2.750	0.687	B	4 Open Slots	4	L25B	\$184	\$236
1437, 1425, 1850	12.490	2.750	0.687	B	Same as L25B w/ Closed Slots	4	L12B	\$181	\$232
1214,	13.500	3.312	0.562	F	High Shear 5 Holes	2	L14F	\$115	\$152
1214,	13.500	1.937	0.562	B	5 Open Slots	2	L14B	\$126	\$190
1219,	18.500	3.375	0.562	F	High Shear 7 Holes	2	L19F	\$172	\$257
1219,	18.500	1.937	0.562	B			L19B	\$188	\$283
1022,	21.000	2.875	0.687	F			L22F	\$197	\$295
FOREMOST									
SG-80, SG300	8.000	1.937	1.187	F	Hook Fly Reverse Bevel 3 Holes		F8HF	\$113	\$155
56-80, SG300	8.000	1.937	0.625	B	4 Slots		F8BA	\$83	\$124
2A-1, 2A-3, 2A-4, 5C-1, 2A-2	8.000	2.218	0.500		Fly/Bed 3 Holes Countersunk	2-8	F8FB	\$125	\$152
Y8301-63C, 1008MS	9.500	2.625	0.500	F	Reverse Bevel 2 Holes		F10FA	\$80	\$121
	11.000	1.937	1.187	F	Hook Fly 5 Holes		F11HF	\$97	\$172
	11.000	2.500	0.625	B	5 Slots		F11B	\$89	\$163
HD1, HD3, HD5, QG1010, MS10, MS20, 10X11, X7301-15, 56100, 56400	9.990	1.937	1.187	F	Hook Fly 4 Holes	2	F10H	\$154	\$206
HD1, HD3, HD5, MS10, QG1010, MS20, 10X11, SRG810, X7301-14, 56100, 56400	10.000	1.937	0.625	B	4 Slots	2	F10B	\$120	\$152
	14.000	1.937	0.625	B	5 Slots Single Bevel		F14BB	\$127	\$192
SHD-5	11.000	3.875	0.875	F	Keen Edge 2 Holes		F11F	\$95	\$143
HD5, QG1010, SG400	20.000	2.250	0.625	B	8 Slots		F20B	\$287	\$302
HD5B	20.000	3.688	1.000	F	Reverse Bevel 4 Holes Counterbored		F20F	\$263	\$394
HD1, MS20	20.000	1.937	1.187	F	Hook Fly 8 Holes		F20HF	\$284	\$300
SK810, SRG810	10.000	2.250	0.500	F	2 Slots		F10F	\$88	\$132
	9.990	1.937	0.625	B	4 Slots		F10BA	\$104	\$156
6A, 6B, HD8	12.000	2.187	1.187	F	Hook Fly 4 Holes	4	F12H	\$179	\$224
6B, HD8	23.968	2.250	0.625	B	8 Slots	2	F24B	\$221	\$326
HD8	36.000	3.000	1.000	B	9 Slots (Fly is F12HFA)		F36B	\$406	\$608

B

featuring the best of:

251

Northern Supply (800-365-6565) • Nickerson Machinery (800-821-9534) • OHS (Ontario-888-809-7050/Quebec-888-475-9224)

Granulator Knives

Replacement granulator knives, manufactured to precise tolerance to replace original equipment. Available in 2 grades of steel: OEM Steel: Standard 52100 steel formulation, which provides a good balance between wear and impact resistance. Recommended for beside-the-press-applications. Super Alloy: Premium grade D2 tool steel formulation, provides much longer life and is better suited to high usage cycles and tough materials. Greatly increases the time between sharpening. Ideal for heavy usage central grinding.



Make & Model	Length	Width	Thick-ness	Fly/Bed	Description	Qty/set	Part No.	Price Each	
								OEM	D2
FOREMOST (cont...)									
HD6, HS18, MS18, SCMS18, SMS18, SG300, QG1814, 6A	18.000	1.937	1.187	F	Hook Fly With 6 holes (Recessed to 3/16")	2	F18H	\$120	\$167
HD6, HS18, 6A, MS18, SCMS18, SMS18, QG1814	18.000	2.250	0.625	B	6 Slots	2	F18B	\$84	\$119
SHD8	12.865	3.763	0.875	F	3 Holes Keen Edge		F13FB	\$89	\$133
HD7	13.000	3.875	0.875	F	3 Holes Keen Edge		F13F	\$114	\$172
HD7	24.000	3.000	1.000	B	6 Slots Single Bevel		F24BA	\$240	\$360
6-B, 6-A	23.968	3.250	0.625	B	8 Slots Single Bevel		F24BB	\$263	\$390
6-B	11.990	2.187	1.187	F	Hook Fly 4 Holes		F12HF	\$132	\$200
6A, 6B, 1624	12.000	2.250	0.625	B	4 Slots 2 Tapped Dowels	4	F12B	\$120	\$180
3C-2, 3E-1, MS12, X7202-30	12.000	2.218	0.500		Fly/Bed 4 Holes Countersunk	2	F12FB	\$150	\$188
S3E-1A, 3C-2, MS12, 11 1/2" HS	11.500	2.625	0.500	B	Reverse Bevel 4 Holes		F12BA	\$119	\$144
	11.990	2.250	1.250	F	Hook Fly 4 Holes		F12HF	\$137	\$205
Pipe cutter PL5431	12.000	2.125	1.125	F	Hook Fly 4 Holes		F12HFA	\$137	\$205
13 1/2" HS	13.500	2.625	0.500		Fly/Bed		F14FBA	\$122	\$184
	13.500	2.625	0.500	F	Reverse Bevel 4 Holes		F14RB	\$127	\$184
DSC-14, S45	14.000	2.250	0.500	F	Keen Edge 5 Tapped Holes		F14FB	\$101	\$144
DSC-14	14.000	1.937	0.500	B	Keen Edge 5 Tapped Holes		F14BA	\$95	\$143
S30, S45, HD4	15.000	4.000	1.000	B	5 Tapped Holes	6	F15B	\$160	\$238
S45, S30, PG2415, HD4	14.985	4.000	1.000	B	5 Tapped Holes	6	F15FA	\$192	\$240
545, 230, PL2415, H04	14.985	5.594	1.000	B	5 Tapped Holes Double Cutting Edge		F15BA	\$253	\$378
3030,	15.000	3.750	0.875	B	4 Slots No Bevel Slants Left		F15BB	\$223	\$335
S45, S30, 3030	15.000	3.875	0.875	B	4 Slots No Bevel		F15BC	\$223	\$335
3030/3048	14.802	3.875	0.875	F	Keen Edge Left Hand 3 Holes		F15FB	\$154	\$230
HD2, HD4, 2H, SG500, SG400, QG1410, MS14, MS28, SG200, HD44, DSC-14, X7302-20	14.000	1.937	1.187	F	Hook Fly 5 Holes	2-4	F14H	\$116	\$148
SG200, MS14, QG1410, HD2, SG400, HD4, MS28, 2H, X7302-19, HD44, DSC-14	14.000	1.937	0.625	B	5 Slots (Possible F14BB)	2	F14B	\$94	\$126

Granulator Knives



Make & Model	Length	Width	Thick-ness	Fly/Bed	Description	Qty/set	Part No.	Price Each	
								OEM	D2
FOREMOST (cont...)									
HD4	14.000	1.750	0.625	F	5 Holes 10 Degree Bevel Radial Rotor		F14FC	\$118	\$174
HD2	13.990	1.937	0.625	B	5 Slots 1 End Tapered (Possible F14B)	9	F14BB	\$140	\$211
15 1/2" HS, 5CL	15.500	2.625	0.500	F	Reverse Bevel 5 Holes	8	F15RB	\$140	\$210
5CI, 16" SHEAR	16.000	2.187	0.500		Fly/Bed 6 Holes Countersunk	2	F16FB	\$140	\$210
	16.000	2.750	0.500	F	Reverse Bevel 5 Slots		F16RB	\$136	\$203
17" HS	17.500	2.625	0.500		Fly/Bed		F17FB	\$149	\$184
	17.500	2.625	0.500	F	Keen Edge 5 Holes		F17F	\$124	\$184
	17.990	2.250	0.625	B	6 Slots (Larger Slots)		F17B	\$163	\$246
GLOUCESTER									
6x8, 68BPS	7.500	2.937	0.468	F	Reverse Bevel 4 Holes	2	G7F	\$66	\$100
6x8, 68BPS	7.875	2.437	0.468	B	Reverse Bevel 4 Slots	1	G7B	\$66	\$100
6x8	7.535	2.910	0.500	F	Reverse Bevel 3 Holes		G7FA	\$72	\$108
1012,	11.875	3.937	0.562	F	Reverse Bevel 6 Holes	2-3	G10FA	\$80	\$121
1012BL10	11.500	3.937	0.562	F	Reverse Bevel 6 Holes		G10F	\$80	\$121
1012BL10	11.875	3.375	0.562	B	6 Slots		G10B	\$80	\$121
BP10	11.750	3.937	0.562	F	Reverse Bevel 6 Holes		G12F	\$80	\$121
1416BP20	15.875	2.906	0.562	B	6 Slots		G15B	\$136	\$191
1416BP20	15.750	3.715	0.562	F	Reverse Bevel 5 Holes		G15FA	\$152	\$228
1218,	17.312	3.950	0.562	F	7 Holes Reverse Bevel		G17F	\$193	\$290
12x18	17.500	3.937	0.562	F	Reverse Bevel 5 Holes	3	G17FA	\$121	\$181
12x18	17.875	3.000	0.562	B	7 Slots	1	G17B	\$127	\$191
1420BP	19.740	3.937	0.555	F	Reverse Bevel 5 Holes		G19F	\$198	\$296
1420BP	19.312	3.812	0.562	F	Reverse Bevel 5 Holes 3 Degrees Low Shear		G19FB	\$198	\$296
1420, BP30	19.677	3.750	0.562	F	Reverse Bevel 6 Holes		G19FA	\$164	\$247
1420, BP30	19.875	3.000	0.562	B	8 Slots		G19BA	\$170	\$256
12x25	24.875	3.875	0.562	F	Reverse Bevel 5 Holes		G25F	\$176	\$264
12x25	24.875	3.000	0.562	B	9 Slots 2 Tapped Dowels	2	G25B	\$180	\$272
250, 50TP10	24.750	2.937	0.468	F	Reverse Bevel 9 Holes	6	G24F	\$227	\$341
250, 50TP10	24.927	2.437	0.468	B	9 Slots 2 Tapped Dowels	2	G24B	\$227	\$341
1428, HD60, B21005023	27.625	3.875	0.687	F	Keen Edge 5 Holes		G28F	\$269	\$336
1428, HD60 B21005024	27.985	3.875	0.687	B	8 Slots		G28BA	\$248	\$307
1428,	28.000	3.906	0.687	B	8 Slots 2 Tapped Dowels	2-4	G28B	\$274	\$410
1416BP15	15.800	3.937	0.562	F	4 Holes		G15F	\$152	\$228
30TD10	29.865	2.880	0.437	F	Reverse Bevel 10 Holes		G29F	\$264	\$397
30TD10	29.927	2.375	0.437	B	10 Slots 2 Tapped Holes Single Bevel		G29B	\$268	\$402
1416BP15	15.800	3.937	0.562	F	4 Holes		G15FB	\$152	\$156

B

featuring the best of:

253

Northern Supply (800-365-6565) • Nickerson Machinery (800-821-9534) • OHS (Ontario-888-809-7050/Quebec-888-475-9224)

Granulator Knives

Replacement granulator knives, manufactured to precise tolerance to replace original equipment. Available in 2 grades of steel: OEM Steel: Standard 52100 steel formulation, which provides a good balance between wear and impact resistance. Recommended for beside-the-press-applications. Super Alloy: Premium grade D2 tool steel formulation, provides much longer life and is better suited to high usage cycles and tough materials. Greatly increases the time between sharpening. Ideal for heavy usage central grinding.



Make & Model	Length	Width	Thick-ness	Fly/Bed	Description	Qty/set	Part No.	Price Each	
								OEM	D2
GRANUTEC									
66 (A66-0015-2)	5.865	1.500	0.250	B	3 Slots		GR6B	\$61	\$86
66 (A66-0010-3)	5.865	2.375	0.375	F	2 Holes		GR6F	\$72	\$100
810-AM A810-002-3	9.906	2.375	0.500	F	High Shear 2 Holes Counterbored		GR10F	\$100	\$139
810,	9.906	2.375	0.500	F	Reverse Bevel 2 Holes Counterbored		GR10FA	\$104	\$139
810-AM A810-0003-2	9.875	1.750	0.375	B	4 Slots		GR10B	\$84	\$127
1012TFG, 1012HN15	11.875	2.125	0.375	B	5 Slots		GR12B	\$118	\$176
1012TFG, 1012HN15	11.875	2.312	0.500	F	2 Holes Counterbored		GR12F	\$127	\$182
A1216	15.875	3.500	0.625	F			GR16F	\$172	\$257
TSG1624, 1616/1612	15.875	3.625	0.625	F	High Shear 4 Holes		GR16FA	\$174	\$214
	15.688	3.625	0.625	F	High Shear 4 Holes		GR16FB	\$143	\$214
A1216	15.813	2.375	0.500	B	5 Slots Double Cutting Edge		GR16B	\$127	\$191
PE.I.	16.000	3.000	0.719	F	High Shear 4 Holes		GR16FC	\$110	\$166
TSG1424-50, TSG1624	23.890	3.630	0.625	F	High Shear 6 Holes		GR24F	\$239	\$296
TSG1424-50, TSG1624	23.890	3.630	0.625	F	Reverse Bevel 6 Holes		GR24RB	\$277	\$296
TSG1424-50, TSG1624	23.890	2.375	0.500	B	7 Slots Double Cutting Edge		GR24B	\$217	\$312
HERBOLD									
	10.625	3.937	0.866	F	2 Slots 3 Tapped Dowels		H11F	\$143	\$214
	11.654	3.937	0.866	B	3 Slots 4 Tapped Dowels		H11B	\$148	\$221
	11.654	3.858	0.866	B	Double Cutting Edge 3 Slots 4 Tapped Dowels		H12B	\$160	\$238
	18.500	2.760	0.630	F	3 Slots 6 Tapped Holes		H19F	\$240	\$359
	15.150	3.989	0.862	B	3 Slots 4 Tapped Holes		H15B	\$163	\$246
45/100, SMS 80/120	19.236	3.937	0.875	B	3 Slots 4 Tapped Dowels		H20B	\$292	\$354
45/100, SMS 80/120	19.093	3.937	0.875	F	Keen Edge 3 Slots 4 Tapped Dowels	14	H20F	\$289	\$370
45/100	39.173	3.937	0.866	B	Double Cutting Edge 4 Tapped Dowels		H40B	\$390	\$544
	19.093	3.937	0.875	F	3 Slots 4 Tapped Dowels 4 Degree Angled Ends		H20FA	\$229	\$342
	18.585	3.937	0.866	F	Reverse Bevel 3 Holes Counterbored		H19RB	\$388	\$342
45/100 SMS 80/120	19.330	3.346	0.630	B	4 Slots 4 Tapped Dowels	4	H19B	\$254	\$318
SMS 80/60	23.425	3.937	0.866	B	6 Slots 4 Tapped Dowels Double Cutting Edge		H24B	\$307	\$462

Granulator Knives



Make & Model	Length	Width	Thick-ness	Fly/Bed	Description	Qty/set	Part No.	Price Each	
								OEM	D2
HERBOLD (cont...)									
	22.362	3.937	0.866	F	3 Slots 4 Tapped Holes Angled Ends		H24F	\$275	\$413
	22.362	3.937	0.866	F	3 Slots 4 Tapped Holes Reverse Bevel Slant On Right And Left side		H24RB	\$422	\$610
80/60	15.748	3.937	0.866	B	4 Slots 4 Tapped Holes Double Cutting Edge		H16B	\$184	\$276
	15.157	3.937	0.866	F	3 Slots High Shear 4 Tapped Dowels		H16F	\$208	\$312
IMS									
A120SC, A144SC, A288SC, AGA120SC, AGU120SC, LP120SC, LP144SC, LP288SC	1.937	1.750	0.562	F	1 Hole Countersunk (Use M8BA Bed)		M2F	\$36	\$52
	1.406	1.437	0.468	F	1 Hole Countersunk		M2FA	\$240	\$336
A86C, A187SC, LP86SC, LP187SC, AG86KHSC, AG866SC, AG868SC	2.125	1.750	0.562	Fly	1 Hole Countersunk (.687 Hole)		M3F	\$34	\$50
Same As M3F Except Hole Size	2.125	1.750	0.562	F	1 Hole Countersunk (.375 Hole)		M3FA	\$37	\$54
	2.125	2.500	0.813	F	Keen Edge 1 Hole Countersunk (.687 Hole)		M3FB	\$44	\$61
LP288SC	2.125	2.500	0.562	F	1 Hole Countersunk Double Cutting Edge		M3FC	\$41	\$61
LP86, A86, AG86	8.365	2.375	0.468	F	Reverse Bevel 4 Slots 2 Tapped Dowels		M8FD	\$110	\$148
2031P	4.865	1.687	0.468	F	Reverse Bevel 2 Holes Countersunk		M4F	\$62	\$92
2031P	4.968	1.531	0.468	B	2 Slots 2 Tapped Dowels		M4B	\$62	\$92
2049,	7.000	1.750	0.468	F	Reverse Bevel 2 Holes Counteresunk		M7FA	\$80	\$120
2049 SERIES M1, M2, M3, G1, G2, G3, K3	7.000	1.312	0.468	F	Radial Rotor 2 Holes	2	M7F	\$64	\$95
2049 SERIES M1, M2, M3, G1, G2, G3, K3	7.250	1.343	0.500	B	2 Open Slots 2 Tapped Dowels	1	M7B	\$68	\$102
2049 SERIES	6.990	1.312	0.468	F	Reverse Bevel 2 Holes Radial Rotor		M7FB	\$64	\$95
Same As M7B Except Smaller Slots	7.250	1.343	0.500	B	2 Open Slots 2 Tapped Dowels		M7BA	\$64	\$95
G466	8.375	2.250	0.500	F	Reverse Bevel 3 Holes Countersunk 2 Tapped Dowels		M8FE	\$72	\$104

B

featuring the best of:

255

Northern Supply (800-365-6565) • Nickerson Machinery (800-821-9534) • OHS (Ontario-888-809-7050/Quebec-888-475-9224)

Granulator Knives

Replacement granulator knives, manufactured to precise tolerance to replace original equipment. Available in 2 grades of steel: OEM Steel: Standard 52100 steel formulation, which provides a good balance between wear and impact resistance. Recommended for beside-the-press-applications. Super Alloy: Premium grade D2 tool steel formulation, provides much longer life and is better suited to high usage cycles and tough materials. Greatly increases the time between sharpening. Ideal for heavy usage central grinding.



Make & Model	Length	Width	Thick-ness	Fly/Bed	Description	Qty/set	Part No.	Price Each	
								OEM	D2
IMS (cont...)									
2069,	8.422	2.250	0.500	F	Reverse Bevel 3 Holes 2 Tapped Dowels Countersunk		M8FA	\$72	\$104
2046 SERIES, 3040SP, LP86, 3046, K4, G4, XD1, M4 SERIES, GL2086 Use M8FB	8.500	2.250	0.468	F	Reverse Bevel 3 Holes Countersunk	2-3	M8FCC	\$72	\$104
2086, GLP2086, GLH2086, GAU26, GAA16CF, GAU46, 1030LB-SPH, 1030LB, 1030CP, 1030CP-SPH, CPGAU26, 2173, K1710K9, CPGAA16CF, K1085, K6, GLU-4173, GLS-4173, GHU4173, GHS4173	8.500	2.250	0.468	B	Bed/Fly Reverse Bevel 3 Holes Countersunk 2 Tapped Dowels (Use M8B Bed)	2-3 -4	M8FB	\$102	\$121
K6, 2086	8.500	2.250	0.468	F	Keen Edge 3 Holes Countersunk	2	M8FF	\$72	\$104
K6, 2086, A86, 2086SP, 2173SP, A120SC, A144SC, A288SC, AGA120SC, AGU120SC, LP120SC, LP144SC, LP288SC	8.593	2.875	0.515	B	3 Slots 2 Tapped Dowels (15 Degree Angle)	2	M8B	\$106	\$154
A187-SP, A187	8.250	3.375	0.625	F	Reverse Bevel 4 Slots 2 Tapped Dowels	4	M9F	\$80	\$115
A187-SP, A187	8.500	3.375	0.625	B	Keen Edge 3 Slots 2 Tapped Dowels	4	M9B	\$104	\$155
A86SPO	8.375	2.250	0.500	F	Reverse Bevel 4 Slots 2 Tapped Dowels		M8FC	\$91	\$138
A86SPO	8.568	2.875	0.500	B	3 Slots 2 Tapped Dowels (55 Degree angle)		M8BA	\$106	\$124
	8.450	2.250	0.468	F	Reverse Bevel 3 Holes Counterbored 2 Tapped Holes		M9FA	\$76	\$112
285, AGU120	11.610	2.438	0.470	F	High Shear Reverse Bevel 4 Holes Counterbored		M11FB	\$104	\$155
285-2120, AGU120	11.968	2.500	0.500	B	3 Slots 2 Tapped Dowels		M11B	\$104	\$157
G566R	11.750	3.375	0.625	F	Keen Edge 4 Holes Countersunk		M11FE	\$76	\$114

Granulator Knives



Make & Model	Length	Width	Thick-ness	Fly/Bed	Description	Qty/set	Part No.	Price Each	
								OEM	D2
IMS (cont...)									
2028, 2056	27.990	4.338	0.875	F	High Shear 5 Holes Counterbored	6	M28F	\$294	\$443
	11.937	3.500	0.625	B	3 Slots 2 Tapped Dowels		M12B	\$104	\$152
LP120, A120-3, AGU120	11.750	2.750	0.562	F	Reverse Bevel 4 Slots 2 Tapped Dowels		M12FA	\$119	\$175
LP-120, A120-3, AGU120	11.943	2.875	0.500	B	3 Slots 2 Tapped Dowels		M12BD	\$127	\$175
M5, XD2, G5, M10, 2144SPO, K5, 2120, 3144, G566R, 12" AUGER	11.875	3.500	0.625	F	Reverse Bevel 4 Holes Countersunk	2-3	M12FB	\$143	\$157
M5, XD2, G5, M10, 2144SPO, K5, 2120, 3144, G566R, 12" AUGER, CP300	11.990	3.500	0.625	B	Radial Rotor 3 Slots 2 Tapped Dowels	2	M11D	\$121	\$152
A144-3, 25P, A-288SP, G566R, LP144-3, A144, LP144-MH	11.740	3.437	0.625	F	Reverse Bevel 4 Slots 2 Tapped Dowels	2-3	M12F	\$143	\$158
A144-3, 35P, A-288SP, A144, LP144-3, LP144-MH	11.937	3.437	0.625	B	3 Slots 2 Tapped Dowels		M12BA	\$143	\$158
	11.937	3.500	0.625	F	4 Holes Countersunk 2 Tapped Dowels		M12FD	\$104	\$152
CP300, 2288SPBV	11.875	3.500	0.625	F	Reverse Bevel 4 Holes Countersunk 2 Tapped Dowels		M12FC	\$102	\$154
2120,	11.625	2.375	0.500	F	Reverse Bevel 4 Holes Counterbored		M11F	\$102	\$154
2120, G866R	11.625	2.437	0.500	F	Keen Edge 4 Holes		M11FA	\$104	\$152
14x17	16.500	4.313	3.712	F	Reverse Bevel 6 Slots Counterbored Beveled Cutting Edge 2 Tapped Dowels		M16F	\$328	\$491
A-144-3-SP	11.937	3.437	0.625	B	3 Slots 2 Tapped Holes		M12BE	\$143	\$158
A-144-3-SP	11.937	3.437	0.625	B	3 Slots 2 Tapped Dowels Single Bevel		M12BF	\$104	\$152
	16.500	4.313	0.688	F	Reverse Bevel 6 Slots 2 Tapped Dowels Beveled Cutting Edge		M16FA	\$289	\$433
MITTS & MERRILL									
13CSD, 14CSF, 15CSH, No Bed Knife	4.750	9.000	0.625	F	Keen Edge 1 Open Slot		MM4F	\$44	\$77
13CSD, 14CSF, 15CSH, No Bed Knife	4.750	9.000	0.625	F	(Same as MM4F with Serrated Back)		MM4FA	\$49	n/a
	8.000	3.250	0.625	F	Keen Edge 1 Open Slot Serrated Back		MM8F	\$43	n/a
8x10	10.250	2.250	0.375	F	Keen Edge 2 Holes Double Cutting Edge	2	MM10F	\$97	\$145

B

featuring the best of:

257

Northern Supply (800-365-6565) • Nickerson Machinery (800-821-9534) • OHS (Ontario-888-809-7050/Quebec-888-475-9224)

Granulator Knives

Replacement granulator knives, manufactured to precise tolerance to replace original equipment. Available in 2 grades of steel: OEM Steel: Standard 52100 steel formulation, which provides a good balance between wear and impact resistance. Recommended for beside-the press-applications. Super Alloy: Premium grade D2 tool steel formulation, provides much longer life and is better suited to high usage cycles and tough materials. Greatly increases the time between sharpening. Ideal for heavy usage central grinding.



Make & Model	Length	Width	Thick-ness	Fly/Bed	Description	Qty/set	Part No.	Price Each	
								OEM	D2
MITTS & MERRILL (cont...)									
8x10	10.500	2.062	0.562	B	2 Holes	2	MM10B	\$90	\$133
10x12	12.250	2.812	0.437	F	Keen Edge 2 Holes Double Cutting Edge	3	MM12F	\$130	\$193
10x12	12.468	2.062	0.562	B	3 Holes	2	MM12B	\$131	\$168
14,	14.875	1.750	0.652	F	Hook Fly 4 Slots		MM14F	\$155	\$230
1635,	17.750	3.000	0.437	F	4 Holes		MM18F	\$164	\$248
1635,	17.750	2.060	0.562	B	3 Holes		MM18B	\$139	\$210
	17.750	2.060	0.562	B	3 Slots		MM18BA	\$155	\$232
13CSD	21.069	3.950	1.000	B	Keen Edge 2 Holes Countersunk	2	MM21B	\$416	\$528
	17.750	2.820	0.437	F	4 Holes		MM18FA	\$164	\$248
14x20	20.500	3.187	0.687	B	4 Holes		MM20BA	\$202	n/a
14x20	20.240	2.875	0.437	F	Keen Edge 4 Holes	3	MM20F	\$217	\$307
14x20	20.500	2.062	0.562	B	3 Holes	2	MM20B	\$216	\$282
	24.000	3.250	0.750	F	5 Holes Counterbored		MM24F	\$258	\$385
	24.365	3.375	0.625	B	7 Slots		MM24B	\$278	\$419
	21.069	3.950	1.000	B	2 Countersunk Holes		MM21BA	\$384	\$576
NELMOR									
AN67	5.820	2.375	0.319	F	Keen Edge 3 Holes		N5F	\$47	\$64
AN67	5.936	1.883	0.379	B	2 Slots		N5B	\$83	\$101
G66M1	5.625	2.125	0.312	F	High Shear 3 Holes Counterbored		N6F	\$66	\$97
G66M1	5.953	1.687	0.375	B	3 Slots		N6B	\$61	\$91
AN88M, AN88MS, L888M	7.740	2.375	0.312	F	High Shear 3 Holes	3	N8F	\$71	\$102
AN88M, AN88MS, L888M	7.937	1.875	0.375	B	2 Slots	2	N8B	\$68	\$96
G2436M2	8.900	3.937	1.000	F	Reverse Bevel 4 Holes Counterbored	20	N8FA	\$85	\$148
AN1010M, 810VL, RG810M1, AN1010MS, GA1010M2, LB1010M, 810RG11, G810MI	9.500	2.375	0.437	F	Keen Edge 6 Holes Counterbored	2-3	N10F	\$68	\$83
G810M1, G6310, RG810M1, AN1010M, AN1010MS, LB1010M, 810RG11, 810VL	9.500	2.375	0.437	F	Reverse Bevel 6 Holes Counterbored	2-3	N10FA	\$91	\$102
G810M1, G6310, RG810M1, AN1010M, AN1010MS, LB1010M, 810RG11, 810VL	9.968	1.875	0.375	B	5 Slots	2	N10B	\$86	\$102

Granulator Knives



Make & Model	Length	Width	Thick-ness	Fly/Bed	Description	Qty/set	Part No.	Price Each	
								OEM	D2
NELMOR (cont...)									
	9.490	2.375	0.437	F	6 Holes Counterbored High Shear		N9F	\$76	\$113
G1012M1, RG1012M1, 1012RG11, G61012M1	11.500	2.750	0.500	F	Reverse Bevel 7 Holes Counterbored	2-3	N12FA	\$97	\$136
G1012M1, G1012LS, RG1012M1, 1012RG11, G61012M1	11.500	2.750	0.500	F	High Shear 7 Holes Counterbored	2-3	N12F	\$97	\$136
G1012M1, G1012LS, RG1012M1, 1012RG11, G61012M1, G1224	11.968	2.484	0.500	B	7 Slots	2	N12B	\$97	\$136
G6012M1	11.958	3.524	0.500	B	7 Slots		N12BA	\$145	\$172
G1214M1	13.490	3.375	0.562	F	High Shear 5 Holes Counterbored	2	N14F	\$131	\$196
G1214M1	13.500	1.937	0.562	B	5 Open Slots	2	N14B	\$125	\$188
	14.500	2.625	0.500	F	High Shear 6 Holes Counterbored		N15F	\$139	\$208
1830 see also N15BA	14.750	3.187	0.625	B	5 Slots Double Cutting Edge		N15BC	\$115	\$144
G1845 see also N13FC	14.490	3.625	0.625	F	Reverse Bevel 5 Holes Counterbored	3-4	N13FA	\$172	\$216
G1215M1, RG1215M1, 1215RG11, G1213M1, 12295M1, RG12295M1, 1229RG11, G1226M1, G1830M1, G12295M1, G16296M1, 2030, 2045	14.500	3.625	0.625	F	Reverse Bevel 5 Holes Counterbored (Standard Rotor)	3-4	N13FC	\$138	\$173
G1215 (Old Machines)	14.500	3.450	0.625	F	Reverse Bevel 5 Holes Counterbored		N13FB	\$138	\$173
G1215M1, F512, RG1215M1, 1215RG11, G1213M1, RG12295M1, 12295RG11, 1830, G1226M1, G16295M1	15.000	2.750	0.625	B	5 Slots (check length, see N15B)	2	N13B	\$107	\$160
G1215M1, RG1215M1, 1215RG11, G1213M1, RG12295M1, 12295RG11, G1226M1, G1830M, G12295M1, G16295M1	14.500	3.610	0.625	F	High Shear 5 Holes Counterbored	3-4	N13F	\$138	\$173
G1215M1, RG1215M1, 1215RG11, G1213M1, RG12295M1, 12295RG11, G1226M1, G12295M1, G16295M1	14.718	2.750	0.625	B	5 Slots (check length, see N13B)		N15B	\$107	\$160

B

featuring the best of:

259

Northern Supply (800-365-6565) • Nickerson Machinery (800-821-9534) • OHS (Ontario-888-809-7050/Quebec-888-475-9224)

Granulator Knives

Replacement granulator knives, manufactured to precise tolerance to replace original equipment. Available in 2 grades of steel: OEM Steel: Standard 52100 steel formulation, which provides a good balance between wear and impact resistance. Recommended for beside-the press-applications. Super Alloy: Premium grade D2 tool steel formulation, provides much longer life and is better suited to high usage cycles and tough materials. Greatly increases the time between sharpening. Ideal for heavy usage central grinding.



Make & Model	Length	Width	Thick-ness	Fly/Bed	Description	Qty/set	Part No.	Price Each	
								OEM	D2
NELMOR (cont...)									
	14.718	3.625	0.625	B	Double Cutting Edge 5 Slots		N15BB	\$215	\$292
G12295M1, G16295, F512, 1830, G1215M1	14.500	3.625	0.625	F	High Shear 5 Holes Counterbored		N13FD	\$138	\$173
1830 (short version of N15BC)	14.718	3.187	0.625	B			N15BA	\$107	\$160
G1436M1	17.875	3.750	1.000	F	6 Holes Reverse Bevel Counterbored		N17FC	\$220	\$280
G1436M, G2436M1	17.865	3.875	0.750	F	High Shear 6 Holes Counterbored	3-6	N36F	\$240	\$301
G3036MR, BED N17BA	17.875	4.750	1.000	F	High Shear 6 Holes		N17FB	\$197	\$294
G3036MR, FLY N17FB	17.935	3.625	0.750	B	6 Slots		N17BA	\$202	\$275
G3036MZ	17.875	4.500	1.000	F	High Shear 6 Holes		N17FD	\$256	\$336
G3036MZ (OEM)	17.875	4.530	1.000	F	High Shear 6 Holes		N17FE	\$256	\$336
G3036M2	17.865	4.500	1.000	F	High Shear 6 Holes		N17FF	\$256	\$336
	16.062	3.750	0.500	B	4 Slots Double Cutting Edge		N16BA	\$108	\$161
G1416M1	15.865	3.312	0.500	F	Keen Edge 4 Holes Counterbored		N16F	\$164	\$208
G1416M1	16.177	3.937	0.500	B	4 Slots Double Cutting Edge		N16B	\$179	\$239
G1416M1	15.865	3.250	0.500	F	High Shear 4 Holes Counterbored		N16FA	\$164	\$208
G1416M1	16.250	2.750	0.625	B	6 Slots		N16BB	\$139	\$210
	17.875	4.500	1.000	F	High Shear 6 Holes		N18FA	\$220	\$292
3030HD	14.500	4.000	1.000	F	5 Counterbored Holes Reverse Bevel		N15FA	\$191	\$278
G1454MB, G2436MB, G1436MB, G1436M1, G2036MB, G2054MB, G2436M1, G3036M1, G2435	17.875	3.875	1.000	F	High Shear 6 Holes Counterbored check slot length	3-6	N35F	\$251	\$280
G1454MB, G2435, G1436MB, G1436M1, G2036MB, G2054MB, G2436MB, G3036M1, G2436M2, G1436MB, G1126M1	17.937	3.500	0.750	B	6 Slots 2 Tapped Dowels check slot length 2.125"	4	N35B	\$208	\$251

Granulator Knives



Make & Model	Length	Width	Thick-ness	Fly/Bed	Description	Qty/set	Part No.	Price Each	
								OEM	D2
NELMOR (cont...)									
G1436M	17.865	3.750	0.750	F	High Shear 6 Holes Counterbored		N18FB	\$240	\$301
G2436M2 (MOD)	17.927	3.625	0.750	B	6 Slots		N18BA	\$217	\$294
G3036M2, 2436M1	17.927	3.500	0.750	B	6 Slots Slot Length 1.625"		N18BB	\$202	\$288
G3036M2, G2436M2	17.865	4.750	1.375	F	Keen Edge 6 Holes Counterbored	6-10	N18FC	\$328	\$476
G3036M2 (MOD)	17.865	4.750	1.375	F	High Shear 6 Holes Counterbored		N18FD	\$328	\$476
3036,	17.875	3.500	0.750	B	6 Slots		N18BC	\$193	\$288
	17.905	5.000	1.000	B	Keen Edge 8 Slots		N18BD	\$316	\$472
1220RG11, G1620M1, G1820M1	17.250	5.655	1.000	F	6 Holes High Shear Counterbored		N17FG	\$306	\$457
	17.875	4.000	1.000	F	High Shear 6 Holes Counterbored		N17FH	\$139	\$208
2536M1	17.875	3.938	1.000	F	High Shear 6 Holes Counterbored		N17FJ	\$245	\$274
1220 (SEM)	19.938	2.750	0.625	B	7 Slots		N19BA	\$133	\$200
2056,	18.563	3.875	1.000	F	Keen Edge 6 Holes Counterbored		N18FE	\$184	\$275
2056, 2456MB	18.625	3.473	0.750	B	6 Slots		N18BE	\$184	\$275
2456MB	18.562	3.938	1.000	F	Reverse Bevel 6 Holes Counterbored		N18F	\$217	\$304
2456MB	18.562	3.938	1.000	F	Keen Edge 6 Holes Counterbored (same as N18F)		N18FF	\$288	\$304
G1220M1, RG1220M1, 1220RG11, G1620M1, G1820M1, SEM 22 DIS, G1830M1	19.490	3.625	0.625	F	High Shear 7 Holes Counterbored	2-3	N20F	\$172	\$236
G1620	19.958	3.250	0.625	B	7 Slots		N19BB	\$196	\$294
G1220M1	19.950	3.188	0.625	B	8 Slots Double Cutting Edge		N19BC	\$222	\$332
G1220M1, RG1220M1, 1220RG11, G1820, G1220MH, G1220M1, G1620M1, G1830M1	19.958	2.750	0.625	B	7 Slots	2	N20B	\$172	\$239
Mini Hog	19.750	2.750	0.625	F	Hook Fly 7 Slots		N19F	\$256	\$307
G1220M1, RG1220M1, 1220RG11, G1620M1, G1820M1, G1830M1	19.500	3.562	0.625	F	Reverse Bevel 7 Holes Counterbored	2-3	N20FA	\$187	\$301
G1820M	19.958	2.750	0.500	B	7 Slots	2	N20BB	\$152	\$229
G1820M	19.958	3.250	0.625	B	7 Slots Double Cutting Edge		N20BA	\$172	\$236
G1220MH1	19.750	2.625	0.625	F	Keen Edge Open Holes		N20FB	\$152	\$196

B

featuring the best of:

261

Northern Supply (800-365-6565) • Nickerson Machinery (800-821-9534) • OHS (Ontario-888-809-7050/Quebec-888-475-9224)

Granulator Knives

Replacement granulator knives, manufactured to precise tolerance to replace original equipment. Available in 2 grades of steel: OEM Steel: Standard 52100 steel formulation, which provides a good balance between wear and impact resistance. Recommended for beside-the press-applications. Super Alloy: Premium grade D2 tool steel formulation, provides much longer life and is better suited to high usage cycles and tough materials. Greatly increases the time between sharpening. Ideal for heavy usage central grinding.



Make & Model	Length	Width	Thick-ness	Fly/Bed	Description	Qty/set	Part No.	Price Each	
								OEM	D2
NELMOR (cont...)									
G1022M1	20.990	2.937	0.750	F	Low Shear 9 Holes	3	N21F	\$172	\$239
G1022M1	21.937	2.875	0.750	B	9 Slots	2	N22B	\$172	\$239
1634,	16.750	3.634	0.625	F	7 Holes Counterbored High Shear		N16FB	\$192	\$289
1634,	16.937	3.169	0.635	B	6 Slots 2 Tapped Holes		N16BC	\$200	\$301
WG6000	19.620	2.850	0.550	F	Keen Edge 4 Holes		N19FA	\$200	\$211
3048MB, G3072M	23.875	5.000	1.000	B	10 Slots		N23B	\$296	\$443
G3072M	23.240	6.000	1.000	F	8 Holes Counterbored High Shear	15	N23FB	\$452	\$832
93072M	23.240	6.000	1.000	F	Reverse Bevel 8 Holes Counterbored		N23FA	\$600	\$778
	23.875	5.000	1.000	B	10 Slots		N23BA	\$462	\$613
	23.490	3.937	1.000	F	High Shear 8 Holes		N24FB	\$299	\$464
G2024MB, G1424MB, G1448M1, G1224P	23.500	3.750	0.750	F	High Shear 8 Holes Counterbored (Use On 100 H.P. Or Less)	3	N24F	\$245	\$282
G1448	23.875	3.750	0.750	F	High Shear 4 Holes Counterbored		N24FD	\$192	\$469
G2024MB, 6202, 1424, G1424MB, G1448M1	23.937	3.500	0.750	B	7 Slots	2	N24B	\$253	\$317
G1424MB, 6202	23.500	3.750	0.750	F	Reverse Bevel 8 Holes Counterbored (.687 Holes)		N24FC	\$245	\$280
14x24	22.490	3.937	1.000	F	High Shear 6 Holes Counterbored	5	N22F	\$206	\$317
14x24, G1448M1	23.861	3.500	0.750	B	8 Slots	2	N22BB	\$192	\$287
G1448M1	23.938	3.500	0.750	B	8 Slots 2 Tapped Holes		N22BA	\$234	\$414
G1424MND	23.490	3.750	1.000	F	8 Holes Counterbored Reverse Bevel (.812 Holes)		N22FA	\$215	\$280
14x24, G2024MB	23.490	3.750	0.750	F	High Shear 8 Holes (.812 Holes)	3	N22FB	\$274	\$340
G1424MB	23.490	3.937	1.000	F	8 Holes High Shear Counterbored .812" Holes (1.750 Counterbored)		N24FA	\$215	\$280
3030HD	14.500	4.000	1.000	F	5 Counterbored Holes High Shear		N14FA	\$140	\$211

Granulator Knives



Make & Model	Length	Width	Thick-ness	Fly/Bed	Description	Qty/set	Part No.	Price Each	
								OEM	D2
NELMOR (cont...)									
1424MB	23.490	3.750	1.000	F	High Shear 8 Holes Counterbored (1.375 CB)		N22FC	\$217	\$284
G2024MB, G1424M, G1448M1, 1424MB	23.500	3.750	1.000	F	High Shear 8 Holes Counterbored (1.750" CB)		N22FD	\$217	\$284
1424,	23.937	3.500	1.000	B	7 Slots		N22BC	\$210	\$270
RL450	7.086	3.937	0.394	F	Low Shear 3 Holes Double Cutting Edge		N7F	\$83	\$116
POLYMER									
68 SILENCER	7.740	2.550	0.562	F	Reverse Bevel 3 Holes Counterbored		P7FD	\$77	\$115
68,	7.555	2.550	0.562	F	Reverse Bevel 3 Holes Counterbored		P7FC	\$102	\$124
68,	7.490	1.937	0.437	F	Keen Edge 3 Holes	2	P7F	\$91	\$113
68, 88	7.875	1.937	0.437	B	3 Open Slots	1	P7B	\$96	\$144
68,	7.500	2.550	0.562	F	Reverse Bevel 3 Holes Counterbored	3	P7FH	\$73	\$112
68,	7.865	1.875	0.437	B	3 Open Slots		P7BA	\$96	\$144
68,	7.750	1.937	0.437	F	Keen Edge 3 Holes	2	P7FK	\$76	\$114
68,	7.865	2.427	0.437	B	3 Open Slots		P7BC	\$77	\$115
68, 88	7.875	2.375	0.375	F	Keen Edge 2 Holes		P7FG	\$91	\$157
88,	7.875	1.937	0.375	B	3 Slots		P7FJ	\$77	\$92
1010A	9.760	2.650	0.500	F	High Shear 6 Slots		P9FG	\$100	\$149
6438SC	11.562	2.875	0.562	F	Reverse Bevel 4 Holes Counterbored		P12FA	\$132	\$166
	11.937	2.850	0.500	B	4 Open Slots		P12BA	\$132	\$166
912,	11.500	2.437	0.562	F	Keen Edge 4 Holes	2	P11F	\$132	\$166
912, 912SP	11.802	2.455	0.590	B	4 Open Slots		P11B	\$132	\$166
912SP	11.625	2.937	0.562	F	Keen Edge 4 Holes Counterbored		P11FD	\$132	\$166
1225,	12.000	3.937	0.938	F	Keen Edge 4 Holes	6	P12F	\$106	\$157
1225,	12.500	3.937	0.937	B	4 Open Slots	4	P12B	\$131	\$196
1116,	15.262	2.937	0.562	F	Right Hand Keen Edge 6 Holes	2	P15FR	\$124	\$185
1116,	15.262	2.937	0.562	F	Left Hand Keen Edge 6 Holes Counterbored	2	P15FL	\$124	\$185
1116 (OLD)	15.490	2.930	0.562	F	6 Holes	2	P15F	\$124	\$185
1116 (NEW)	15.703	2.937	0.562	F	6 Holes Counterbored Slant Left		P15FA	\$154	\$232
1120,	19.593	2.937	0.562	F	Keen Edge 7 Holes Counterbored Slant Left	2	P19FE	\$233	\$274
1120,	19.500	2.906	0.562	F	Reverse Bevel 7 Holes Counterbored	2	P19FD	\$233	\$274
1120,	19.865	2.937	0.562	B	7 Open Slots	1	P19B	\$239	\$298

B

featuring the best of:

263

Northern Supply (800-365-6565) • Nickerson Machinery (800-821-9534) • OHS (Ontario-888-809-7050/Quebec-888-475-9224)

Granulator Knives

Replacement granulator knives, manufactured to precise tolerance to replace original equipment. Available in 2 grades of steel: OEM Steel: Standard 52100 steel formulation, which provides a good balance between wear and impact resistance. Recommended for beside-the-press-applications. Super Alloy: Premium grade D2 tool steel formulation, provides much longer life and is better suited to high usage cycles and tough materials. Greatly increases the time between sharpening. Ideal for heavy usage central grinding.



Make & Model	Length	Width	Thick-ness	Fly/Bed	Description	Qty/set	Part No.	Price Each	
								OEM	D2
POLYMER (cont..)									
1120 (OLD)	19.500	2.906	0.562	F	High Shear 7 Holes	2	P19FA	\$187	\$280
1020 SIL	19.500	2.918	0.562	F	Keen Edge 5 Holes Counterbored	3	P20F	\$178	\$264
	19.500	2.918	0.562	F	Reverse Bevel 5 Holes Counterbored	3	P20FA	\$193	\$289
2040, 1620	20.000	3.875	0.937	F	High Shear 4 Holes	6	P40F	\$295	\$336
2040,	20.453	3.875	0.937	B	6 Open Slots	4	P40B	call	call
1526, 1426 LOBOY	25.250	3.875	0.687	F	Keen Edge 5 Holes	3	P26FA	\$319	\$397
1526, 1426 LOBOY	25.250	3.875	0.687	F	Keen Edge 5 Holes	3	P26F	\$298	\$389
1526, 1426 LOBOY	25.750	3.437	0.687	B	7 Open Slots	2	P26B	\$295	\$382
1526, 1426 LOBOY	25.927	3.437	0.687	B	7 Open Slots		P26BA	\$208	\$310
32x74, 32x56	20.250	4.312	1.125	F	Reverse Bevel 4 Holes Counterbored		P20FB	\$300	\$450
32x74	18.562	3.750	0.875	B	5 Slots 2 Tapped Holes w/ 2 Face Holes Single Bevel		P18BA	\$175	\$263
	31.875	2.537	0.562	B	9 Open Slots		P31B	\$262	\$394
	31.500	3.523	0.562	F	Reverse Bevel 9 Holes Counterbored		P31FA	\$310	\$462
1632 SIL	31.500	3.500	0.562	F	Keen Edge 7 Holes Counterbored		P31F	\$281	\$420
RAINVILLE									
1011,	11.000	2.000	1.250	F	Hook Fly 4 Holes Recessed .562"	2-3	R11H	\$131	\$198
1011,	11.000	2.000	0.625	B	5 Slots		R11B	\$90	\$134
1011,	11.000	2.000	0.625	B	4 Slots	2	R11BA	\$90	\$134
1015, 1415	15.000	2.000	1.250	F	Hook Fly 6 Holes (Recessed .562")	2-3	R15H	\$179	\$269
1015, 1415	15.000	2.312	0.562	F	Fly 5 Holes	2-3	R15F	\$119	\$178
1015, 1415	15.000	2.000	0.625	B	6 Slots	2	R15B	\$124	\$184
1419,	19.000	2.000	1.250	F	Hook Fly 8 Holes (Recessed .562")	2-3	R19H	\$250	\$374
1419,	19.000	2.000	0.625	B	8 Slots	2	R19B	\$172	\$258
	11.000	1.750	0.625	B	5 Slots		R11BB	\$101	\$161
28 SLS	11.000	2.000	1.135	F	Hook Fly 4 Holes		R11HA	\$157	\$235
RAMCO									
1030,	5.150	1.577	0.625	F	2 Tapped Holes Double Cutting Edge		RM6A	\$107	\$162
1030,	5.109	1.812	0.500	B	4 Tapped Holes Double Cutting Edge		RM6B	\$83	\$125

Granulator Knives



Make & Model	Length	Width	Thick-ness	Fly/Bed	Description	Qty/set	Part No.	Price Each	
								OEM	D2
RAMCO (cont...)									
C1030	6.168	1.410	0.625	F	4 Tapped Holes Double Cutting Edge		RM7F	\$58	\$86
1418H	9.062	2.359	0.875	F	2 Tapped Holes		RM9F	\$217	\$326
1418H	8.937	2.641	0.625	B	2 Slots		RM9B	\$192	\$288
	9.122	2.750	0.625	B	2 Slots Double Cutting Edge		RM9BA	\$192	\$288
8x10	10.125	1.487	0.625	F	Keen Edge 3 Tapped Dowels Double Cutting Edge	2	RM10F	\$120	\$181
8x10	10.115	1.750	0.500	B	6 Tapped Holes Double Cutting Edge	2	RM10B	\$112	\$167
1424W	10.000	2.750	0.500	F	Radial Rotor 3 Slots	2	RM10FA	\$85	\$128
	10.100	1.500	0.625	F	3 Holes Tapped And Counterbored		RM10FB	\$124	\$186
8x10	10.125	1.503	0.625	F	3 Holes Tapped And Counterbored		RM10FC	\$188	\$239
8x10	10.125	1.812	0.500	B	6 Tapped Holes Double Cutting Edge		RM10BA	\$157	\$200
1012, B1012-R6	12.052	1.483	0.687	F	Keen Edge 3 Holes Counterbored Double Cutting Edge	2	RM12F	\$167	\$216
1012, B1012-M17	11.984	2.125	0.500	F	3 Slots Double Cutting Edge	2	RM12B	\$157	\$200
1012,	12.052	2.875	0.750	F	Keen Edge 4 Holes Counterbored Single Cutting Edge		RM12FA	\$152	\$221
14x18, (LT duty)	18.062	1.812	0.500	F	Reverse Bevel 4 Tapped Dowels	2	RM18FA	\$157	\$182
14x18	18.000	2.750	0.612	B	4 Holes	2	RM18B	\$148	\$221
14x18, 1436, (heavy duty)	18.062	2.312	0.875	F	Keen Edge 4 Holes Tapped and Counterbored Double Cutting Edge	2	RM18F	\$186	\$419
1418I	18.043	2.874	0.875	F	Keen Edge 5 Holes Counterbored	6	RM18FC	\$167	\$250
14x18, 1436, (use RM18BB)	18.000	3.000	0.625	B	4 Slots Double Cutting Edge	2	RM18BA	\$229	\$344
2436, 1418	18.000	2.625	0.625	B	4 Slots Double Cutting Edge		RM18BB	\$200	\$317
1527,	26.927	3.875	2.000	F	Hook Fly 5 Holes Counterbored		RM26F	\$443	\$802
1527,	26.937	3.875	0.875	B	7 Open Slots	2	RM27B	\$472	\$624
1527,	26.937	3.875	2.000	F	Hook Fly 5 Holes (Recessed 1")	3	RM26FA	\$612	\$919

B

featuring the best of:

265

Northern Supply (800-365-6565) • Nickerson Machinery (800-821-9534) • OHS (Ontario-888-809-7050/Quebec-888-475-9224)

Granulator Knives

Replacement granulator knives, manufactured to precise tolerance to replace original equipment. Available in 2 grades of steel: OEM Steel: Standard 52100 steel formulation, which provides a good balance between wear and impact resistance. Recommended for beside-the-press-applications. Super Alloy: Premium grade D2 tool steel formulation, provides much longer life and is better suited to high usage cycles and tough materials. Greatly increases the time between sharpening. Ideal for heavy usage central grinding.



Make & Model	Length	Width	Thick-ness	Fly/Bed	Description	Qty/set	Part No.	Price Each	
								OEM	D2
RAMCO (cont...)									
1527 SPECIAL	13.490	4.250	1.375	F	3 Counterbored Holes Reverse Bevel		RM13F	\$197	\$294
2436,	17.927	2.687	0.625	B	4 Slots		RM17B	\$162	\$244
2436,	36.000	3.875	1.000	F	Reverse Bevel 8 Holes Counterbored		RM35F	\$472	\$637
2436,	17.927	2.687	0.875	B	4 Slots		RM17BA	\$158	\$227
2436,	36.000	3.875	1.000	F	Keen Edge 8 Holes Counterbored		RM35FA	\$472	\$637
2436,	18.000	2.755	0.625	B	4 Slots		RM18BC	\$152	\$227
2436,	18.019	2.375	0.625	F	4 Tapped Dowels		RM18FB	\$145	\$220
2436,	36.026	3.867	1.625	F	Hook Fly 8 Holes Counterbored	3	RM36F	\$725	\$1,088
RAPID									
GK20, 158	3.838	1.693	0.276	B	2 Slots		RP4B	\$34	\$50
GK20, 158	3.838	1.693	0.312	F	Keen Edge 2 Slots		RP4F	\$34	\$50
GK205, 79C, K, GK2218A, 79MS	8.875	2.515	0.500	F	Low Shear 2 Slots		RP8F	\$77	\$115
79MS	8.897	2.559	0.475	B	2 Slots		RP9B	\$67	\$114
GK205, 79C, K, GK2218A	9.843	1.500	0.375	B	3 Tapped Dowels		RP10BA	\$67	\$114
1012K	11.802	2.875	0.500	F	2 Slots		RP12F	\$100	\$149
1012, GK3026	11.875	2.875	0.531	F	High Shear 2 Slots	3	RP12FD	\$96	\$144
1012, GK3026	12.812	2.875	0.531	B	2 Slots Double Cutting Edge	2	RP13FA	\$125	\$184
GK1000, 2442HOG, (HD ROTOR)	10.290	3.750	1.000	F	High Shear 3 Slots 2 Tapped Dowels 1" Slots	20	RP10FA	\$104	\$138
GK1000, 2442, (RS ROTOR)	0.296	3.750	1.000	F	Low Shear 3 Slots 2 Tapped Dowels 7/8" Slots	20	RP10F	\$104	\$138
GK1000, 2442	41.710	2.120	1.340	B	1 Upper 9 Slots Counterbored 8 Holes	1	RP41B	\$349	\$541
GK1000, 2442	44.093	1.812	1.187	B	2 Lower 7 Tapped Holes 2 Tapped Dowels	2	RP44B	\$270	\$404
GK1000R	13.740	2.437	0.710	F	No Holes		RP13F	\$134	\$202
600 "V"	11.750	2.875	0.531	F	Left Hand Low Shear 3 Slots	4	RP12FA	\$85	\$106
600 "V"	11.750	2.875	0.531	F	Right Hand 3 Slots	4	RP12FVR	\$85	\$106
600C	11.740	1.885	0.580	F	No Holes		RP12FB	\$86	\$130

Granulator Knives



Make & Model	Length	Width	Thick-ness	Fly/Bed	Description	Qty/set	Part No.	Price Each	
								OEM	D2
RAPID (cont...)									
GK640	11.990	2.810	0.562	F	Left Hand Low Shear 3 Slots	4	RP12FVL	\$85	\$131
GK640	11.990	2.810	0.562	F	Right Hand Low Shear 3 Slots	4	RP12FAR	\$85	\$131
GK640 (MOD)	11.990	3.310	0.562	F	High Shear 3 Slots Left Hand		RP12FAL	\$104	\$155
	17.750	3.312	0.950	F	4 Slots Right Hand 2 Tapped Dowels High Shear		RP18FR	\$288	\$431
	17.750	3.312	0.950	F	4 Slots Left Hand 2 Tapped Dowels High Shear		RP18FL	\$288	\$431
	18.063	2.755	0.792	B	4 Slots 2 Tapped And Drilled Holes		RP18B	\$241	\$361
GK600, GK625, 1224C, GK650, GK640, GK600SK	12.000	2.875	0.562	F	Left Hand Low Shear 3 Slots	4	RP12FSL	\$85	\$109
GK640 (MOD)	11.990	3.310	0.562	F	High Shear 3 Slots Right Hand		RP12FS	\$104	\$191
GK600, GK625, 1224C, GK650, GK640, GK600SK	12.000	2.875	0.562	F	Right Hand Low Shear 3 Slots	4	RP12FSR	\$85	\$109
GK600, 1224C, GK640, GK650, 600 "U", GK600SK	24.802	1.890	0.562	B	7 Tapped Dowels	2	RP25BV	\$148	\$176
GK600	23.500	1.937	0.750	B	4 Slots Counterbored 3rd Bed		RP24B	\$210	\$312
GK100C, 912C, 75C, 50C, 150C, 250E, 3023KU	11.654	2.625	0.562	F	Low Shear 2 Slots		RP11F	\$77	\$120
	13.875	2.700	0.531	F	Radial Rotor 3 Slots Right Hand		RP14FR	\$130	\$196
	13.875	2.700	0.531	F	Radial Rotor 3 Slots Left Hand		RP14FL	\$130	\$196
GK600	28.740	1.889	0.550	B	3 Tapped Holes		RP25BA	\$173	\$344
GK100C, 912C, 75C, 50C, 150C, 250E, 3023KU	12.625	1.875	0.562	B	Keen Edge 2 Tapped Holes 1 Tapped Dowel		RP12B	\$80	\$107
GK100C, 912C, 75C	11.654	2.625	0.562	F	High Shear 2 Slots		RP11FA	\$86	\$130
75E	15.150	1.815	0.560	B	2 Holes		RP15BA	\$110	\$166
75E	15.150	1.815	0.560	B	Same as RP15BA but with end holes		RP15BB	\$116	\$174
1831, GK8045	15.375	3.150	0.750	F	High Shear 3 Slots (slot .125 from back edge)		RP16F	\$120	\$160
1831,	15.375	3.740	0.790	F	Reverse Bevel 3 Slots Left Hand		RP16FL	\$136	\$240
1831,	15.375	3.740	0.790	F	Reverse Bevel 3 Slots Right Hand		RP16FR	\$136	\$240

B

featuring the best of:

267

Northern Supply (800-365-6565) • Nickerson Machinery (800-821-9534) • OHS (Ontario-888-809-7050/Quebec-888-475-9224)

Granulator Knives

Replacement granulator knives, manufactured to precise tolerance to replace original equipment. Available in 2 grades of steel: OEM Steel: Standard 52100 steel formulation, which provides a good balance between wear and impact resistance. Recommended for beside-the-press-applications. Super Alloy: Premium grade D2 tool steel formulation, provides much longer life and is better suited to high usage cycles and tough materials. Greatly increases the time between sharpening. Ideal for heavy usage central grinding.



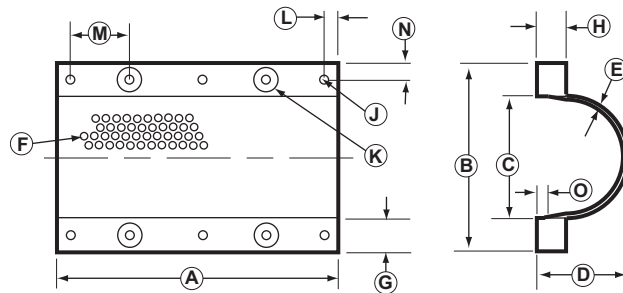
Make & Model	Length	Width	Thick-ness	Fly/Bed	Description	Qty/set	Part No.	Price Each	
								OEM	D2
RAPID (cont...)									
1831, GK8045	31.625	2.778	0.781	B	4 Slots		RP32B	\$216	\$239
1831,	30.938	2.778	0.790	B	3rd Bed No Bevel (Square)		RP30B	\$284	\$427
1831K, 1830KU	15.375	3.125	0.781	F	Keen Edge 3 Slots (Slot .436 from back edge)		RP16FA	\$119	\$179
1418,	17.500	3.820	0.750	F	3 Slots	3	RP18FA	\$155	\$210
1418, GK4535KU	18.656	3.250	0.750	B	3 Slots	2	RP19B	\$148	\$179
GK4535KU	17.500	3.824	0.687	F	Keen Edge 3 Slots		RP18F	\$163	\$245
GK300, GK4535KU	15.000	1.880	0.551	B	2 Tapped Holes		RP15B	\$116	\$176

Granulator Screens

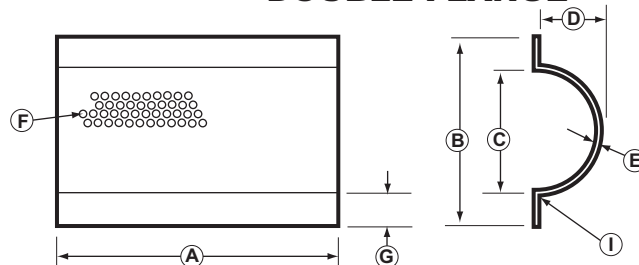
These screens are manufactured for your specific application from a standard ASTM A36 material or an AR235 steel for processing high abrasive materials. Please fill out the worksheet below and either fax or email a copy of this page back to us.

- (A) LENGTH _____
- (B) OVERALL WIDTH OF SCREEN _____
- (C) INSIDE WIDTH OF SCREEN _____
- (D) DEPTH OF RADIUS (INSIDE) _____
- (E) THICKNESS _____
- (F) HOLE SIZE _____
- (G) WIDTH OF FLANGE _____
- (H) THICKNESS OF FLANGE _____
- (I) BEND RADIUS _____
- (J) HOLE SIZE ON BAR FLANGE _____
- (K) COUNTERBORE HOLE SIZE _____
- (L) EDGE TO FIRST HOLE _____
- (M) CENTER TO CENTER OF HOLES _____
- (N) SIDE TO FIRST HOLE (IF APPLIES) _____
- (O) SCREEN LOCATION _____
(RELATIVE TO TOP OF BAR)

BAR FLANGE



DOUBLE FLANGE



MACHINE NAME: _____

MACHINE MODEL: _____

O.E.M. # (IF AVAILABLE): _____

- SELECT ONE: BAR FLANGE
 DOUBLE FLANGE