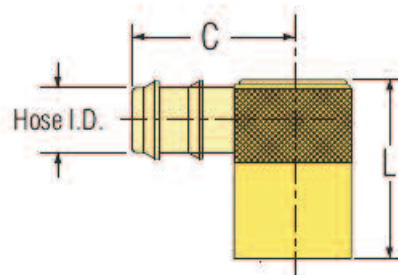
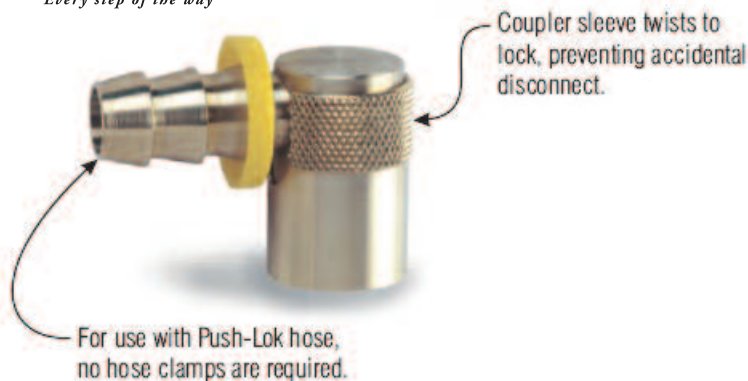


Quick-Coupler Type Water Jumpers

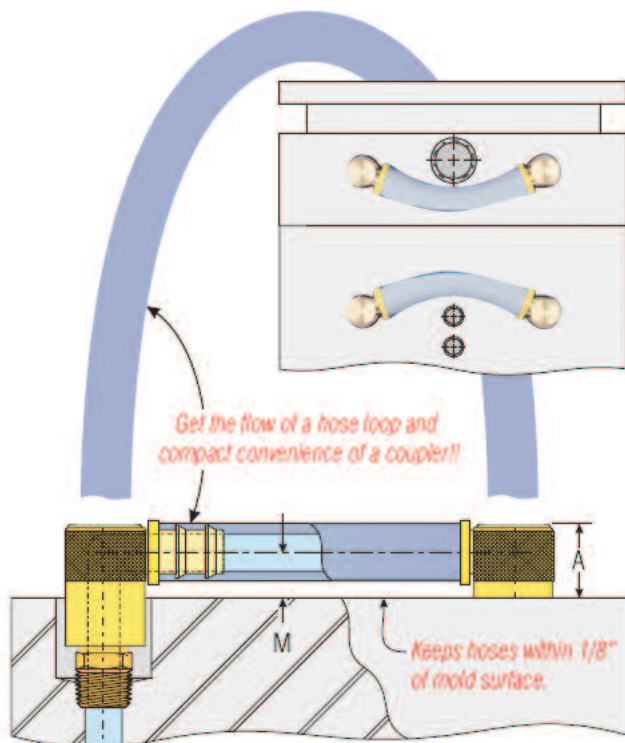
Standard



NOTE: ALL PRICES ARE IN CANADIAN DOLLARS!

Part#	Hose I.D.	Fits Plug Series No.	Measurements (Refer to drawing above)			Price Each
			C	C	M	
WJ200-4	1/4	200	1	1 1/4	3/8	\$6.60
WJ200-5	5/16	200	1	1 1/4	3/8	\$6.60
WJ200-6	3/8	200	1	1 1/4	3/8	\$6.60
WJ300-6	3/8	300	1 7/16	1 9/16	1/2	\$7.44
WJ300-8	1/2	300	1 7/16	1 9/16	1/2	\$7.44
WJ500-8	1/2	500	2 1/8	2	7/8	\$14.34
WJ500-12	3/4	500	2 1/8	2	7/8	\$14.34

- Oversized and unrestricted flow path maintains full flow rate of hose used.
- Compact design neatly and safely holds cooling lines close to the mold surface.
- Exclusive Locking Sleeve prevents accidental disconnect and ensures proper installation.
- Unlimited installation options. Fits around obstacles, and installs in compact spaces.
- All brass and stainless steel construction.
- Viton Seals provide for temps up to 400 °F.
- Compatible with all major mold connection systems

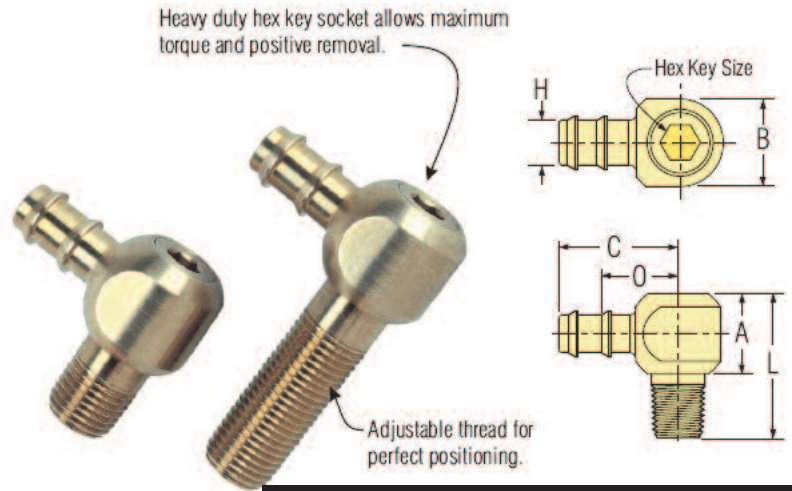


Quick-Coupler Type Water Jumpers

Swivel Head

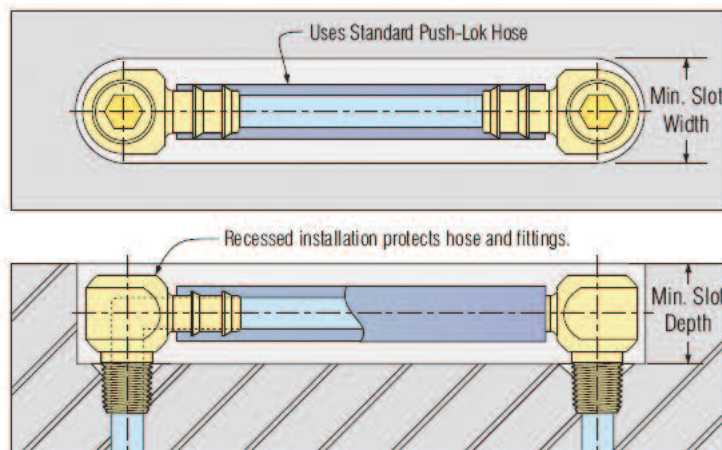
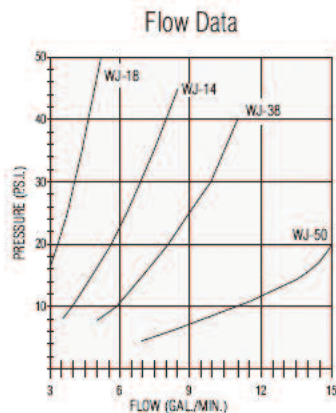


- Can be fully recessed to prevent accidental disconnect or damage.
- Swivel Body allows for installation in tight spaces.
- Eliminate crimped hoses and setup errors.
- Viton O-ring seals.
- All brass construction.
- Easy hex key installation.
- Custom Length Water Jumpers available.



NOTE: ALL PRICES ARE IN CANADIAN DOLLARS!

Part#	Pipe Size (NPT)	Hose I.D.	Hex Key Size	Measurements (Refer to drawing above)					For Recessed Installation		Price Each
				L	A	C	O	B	Min. Slot Width	Min. Slot Depth	
WJ18S	1/8	5/16	3/16	1 3/16	11/16	1	5/8	.660	11/16	1	\$10.08
WJ18M	1/8	5/16	3/16	2	11/16	1	5/8	.660	11/16	1	\$10.86
WJ18L	1/8	5/16	3/16	3 1/2	11/16	1	5/8	.660	11/16	1	\$11.58
WJ14S	1/4	3/8	1/4	1 7/16	13/16	1 3/16	25/32	.840	7/8	1 3/16	\$11.76
WJ14M	1/4	3/8	1/4	2 3/8	13/16	1 3/16	25/32	.840	7/8	1 3/16	\$12.54
WJ14L	1/4	3/8	1/4	3 7/8	13/16	1 3/16	25/32	.840	7/8	1 3/16	\$13.26
WJ38S	3/8	1/2	5/16	1 5/8	1	1 3/8	15/16	.980	1	1 3/8	\$13.20
WJ38M	3/8	1/2	5/16	2 5/8	1	1 3/8	15/16	.980	1	1 3/8	\$14.04
WJ38L	3/8	1/2	5/16	4 1/8	1	1 3/8	15/16	.980	1	1 3/8	\$14.88
WJ50S	1/2	3/4	3/8	2	1 1/8	1 1/2	1 1/8	1.235	1 1/4	1 9/16	\$15.06
WJ50M	1/2	3/4	3/8	3	1 1/8	1 1/2	1 1/8	1.235	1 1/4	1 9/16	\$16.32
WJ50L	1/2	3/4	3/8	4 1/2	1 1/8	1 1/2	1 1/8	1.235	1 1/4	1 9/16	\$17.58



featuring the best of:

396b

E