

Granulator Knives

Replacement granulator knives, manufactured to precise tolerance to replace original equipment. Available in 2 grades of steel: OEM Steel: Standard 52100 steel formulation, which provides a good balance between wear and impact resistance. Recommended for beside-the-press-applications. Super Alloy: Premium grade D2 tool steel formulation, provides much longer life and is better suited to high usage cycles and tough materials. Greatly increases the time between sharpening. Ideal for heavy usage central grinding.



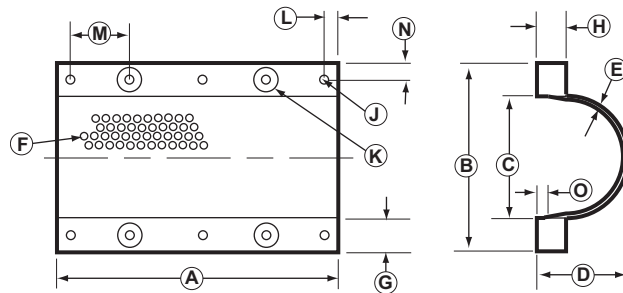
Make & Model	Length	Width	Thick-ness	Fly/Bed	Description	Qty/set	Part No.	Price Each	
								OEM	D2
RAPID (cont...)									
1831, GK8045	31.625	2.778	0.781	B	4 Slots		RP32B	\$216	\$239
1831,	30.938	2.778	0.790	B	3rd Bed No Bevel (Square)		RP30B	\$284	\$427
1831K, 1830KU	15.375	3.125	0.781	F	Keen Edge 3 Slots (Slot .436 from back edge)		RP16FA	\$119	\$179
1418,	17.500	3.820	0.750	F	3 Slots	3	RP18FA	\$155	\$210
1418, GK4535KU	18.656	3.250	0.750	B	3 Slots	2	RP19B	\$148	\$179
GK4535KU	17.500	3.824	0.687	F	Keen Edge 3 Slots		RP18F	\$163	\$245
GK300, GK4535KU	15.000	1.880	0.551	B	2 Tapped Holes		RP15B	\$116	\$176

Granulator Screens

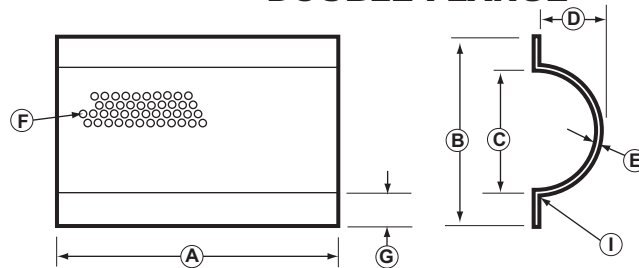
These screens are manufactured for your specific application from a standard ASTM A36 material or an AR235 steel for processing high abrasive materials. Please fill out the worksheet below and either fax or email a copy of this page back to us.

- (A) LENGTH _____
- (B) OVERALL WIDTH OF SCREEN _____
- (C) INSIDE WIDTH OF SCREEN _____
- (D) DEPTH OF RADIUS (INSIDE) _____
- (E) THICKNESS _____
- (F) HOLE SIZE _____
- (G) WIDTH OF FLANGE _____
- (H) THICKNESS OF FLANGE _____
- (I) BEND RADIUS _____
- (J) HOLE SIZE ON BAR FLANGE _____
- (K) COUNTERBORE HOLE SIZE _____
- (L) EDGE TO FIRST HOLE _____
- (M) CENTER TO CENTER OF HOLES _____
- (N) SIDE TO FIRST HOLE (IF APPLIES) _____
- (O) SCREEN LOCATION _____
(RELATIVE TO TOP OF BAR)

BAR FLANGE



DOUBLE FLANGE



MACHINE NAME: _____

MACHINE MODEL: _____

O.E.M. # (IF AVAILABLE): _____

SELECT ONE: BAR FLANGE
 DOUBLE FLANGE