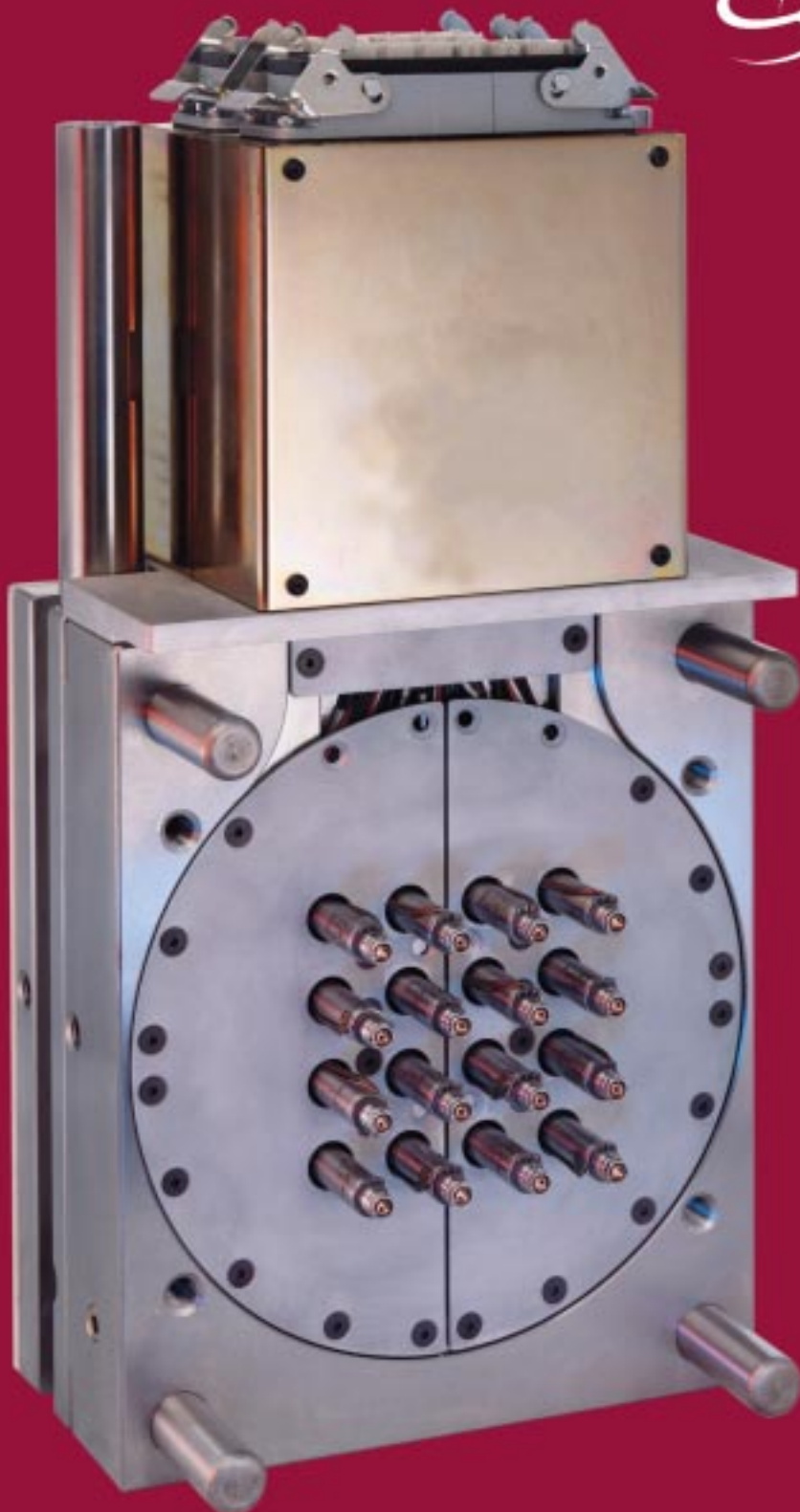
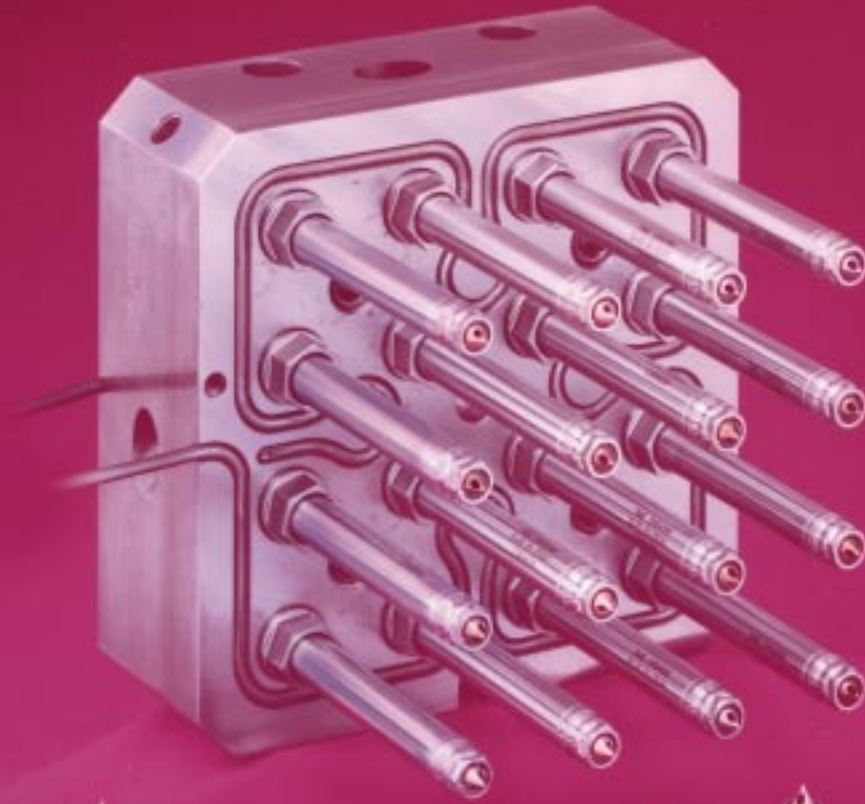


D-M-E Hot Runner Systems

 **Stellar**[™]
Quick Delivery Systems

**4-, 8- and 16-drop
configurations
with rapid delivery**





Get the Stellar edge — now even faster

D-M-E introduces a new quick-delivery program for Stellar Hot Runner Systems. Three configurations are available to meet your needs.

- **Stellar QDS**
4-, 8- and 16-drop multi-nozzle assemblies (MNAs) shipped in only 3-5 days

Key advantages of Stellar Hot Runner Systems

- **Outstanding performance with challenging engineered materials** – amorphous material like PET or crystalline resins like PBT and PA are no problem with Stellar's high conductivity tip material and precise heat profiling
- **Ideal for high-cavitation** – well-suited for medical, electrical/electronic and cosmetic packaging applications
- **A choice of two tip styles** – Point gate and sprue gate tips enable customization to meet your needs
- **A choice of three nozzle A dimensions** – 65, 85, 105, 125, and 145mm
- **Industry-leading choice of MNAs** – Stellar features the industry's broadest line of standard manifolds
- **Easy serviceability** – front-loaded nozzle tips, mini-tubular heaters and thermocouples are easily replaced with the mold in the machine
- **Extended warranty** – D-M-E now offers a 3-year, leak-proof warranty on all Stellar package systems

Stellar Quick Delivery Program Overview

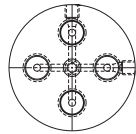
Stellar 1 Round MNAs

Manifold Options

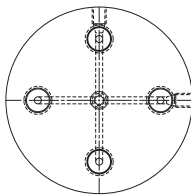
Quick Delivery Lead Time 3-5 Days

Gate Circle Diameter

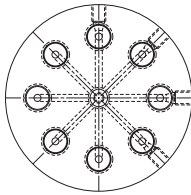
4-Drop
40mm



4-Drop
70mm



8-Drop
70mm



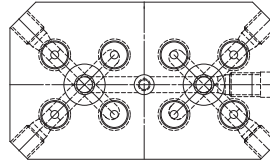
Stellar 1 Rectangular MNAs

Manifold Options

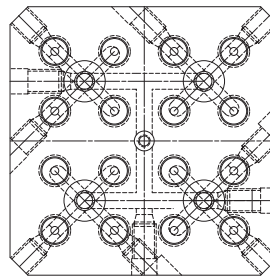
Quick Delivery Lead Time 3-5 Days

Pitch

8-Drop
30mm



16-Drop
30mm



Stellar Quick Delivery Systems

Description	Stellar 1 MNA Quick Delivery Lead Time 3-5 Day
ROUND	Item No.
4-Drop 40mm	SRD4004
4-Drop 70mm	SRD7004
8-Drop 70mm	SRD7008
RECTANGULAR	Item No.
8-Drop 30mm	SRC3308
16-Drop 30mm	SRC3316

Recommended Nozzle Flow Capacities

Item No.	Description	Gate Diameter	Flow Capacity in Grams		
			Low Viscosity MFI >16	Medium Viscosity MFI 7-16	High Viscosity MFI .02-7
SXT4010	Stellar Point Gate Tip	1.0mm/0.040in	12	12	5
		1.5mm/0.060in	16	16	12
SXT1040	Stellar Sprue Gate Tip	2.0mm/0.080in	40	30	20

APPLICATION NOTES

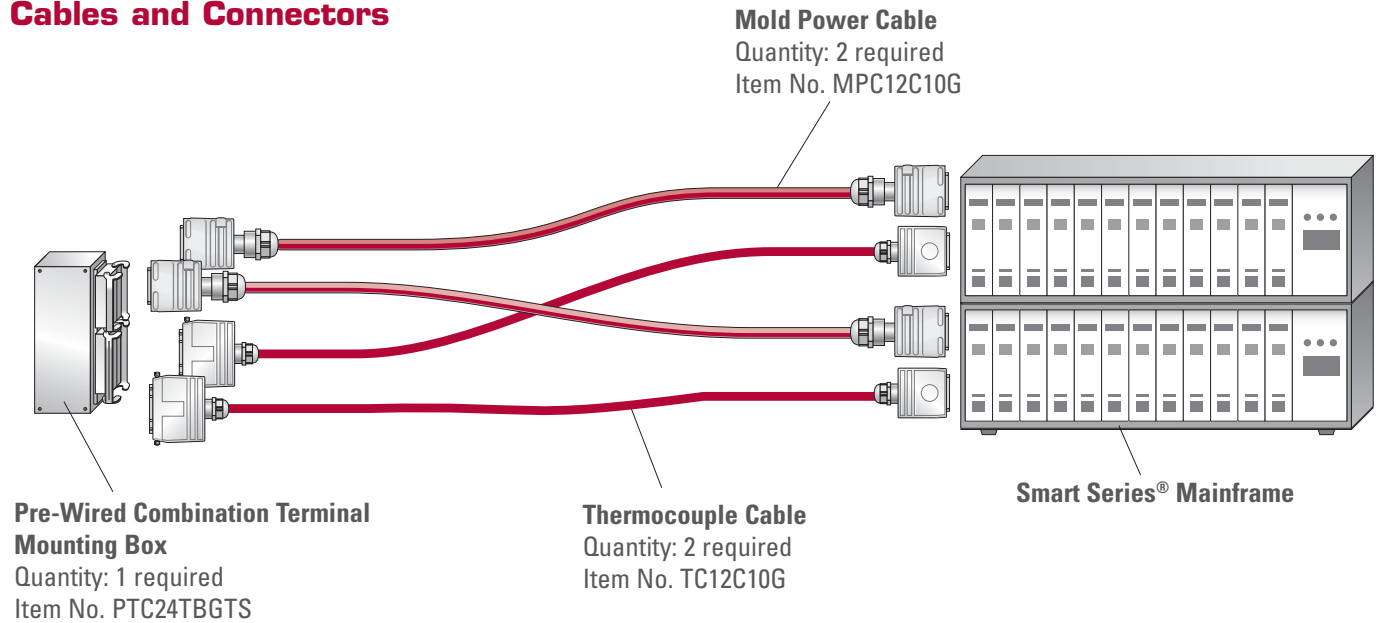
Stellar systems are recommended for:

- Material process temperatures below 315°C/600°F
- Unfilled resins
- Materials without flame-retardant additives

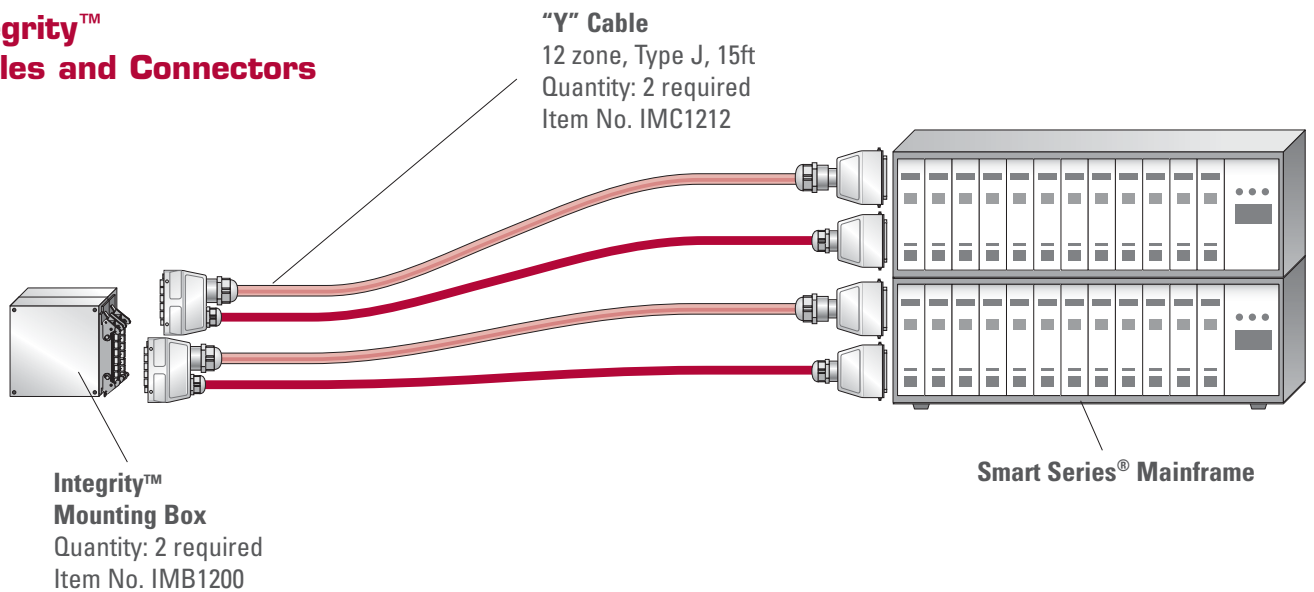
For Stellar MNA Application Guides, please visit www.dme.net. To request CAD files, please contact appl_eng@dme.net.

Smart Series and Integrity — 16-Drop Configurations

Standard Smart Series® Cables and Connectors

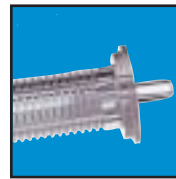


Integrity™ Cables and Connectors



Stellar™ Quick Delivery Systems are just one of a family of D-M-E hot runner solutions. From components to turnkey hot halves, all D-M-E hot runner systems feature best-in-class components, application engineering expertise and our 100% satisfaction guarantee.

Serving customers in over 70 countries worldwide, no one equals D-M-E for injection molding solutions and support. D-M-E operates manufacturing and distribution locations in North America, South America, Europe and Asia.



**World Headquarters
D-M-E Company**

29111 Stephenson Highway
Madison Heights, MI 48071
800-626-6653 *toll-free tel*
248-398-6000 *tel*
888-808-4363 *toll-free fax*
www.dme.net *web*
info@dme.net *e-mail*

D-M-E of Canada, Ltd.

6210 Northwest Drive
Mississauga, Ontario
Canada L4V 1J6
800-387-6600 *toll-free tel*
905-677-6370 *tel*
800-461-9965 *toll-free fax*

D-M-E Europe

D-M-E Belgium C.V.B.A.
Industriepark Noord
B-2800 Mechelen Belgium
32-15-215011 *tel*
32-15-218235 *fax*
dme_europe@dmeeu.com *e-mail*

