

# Black and Gold Side Interlocks

## Industry-Leading Interchangeability

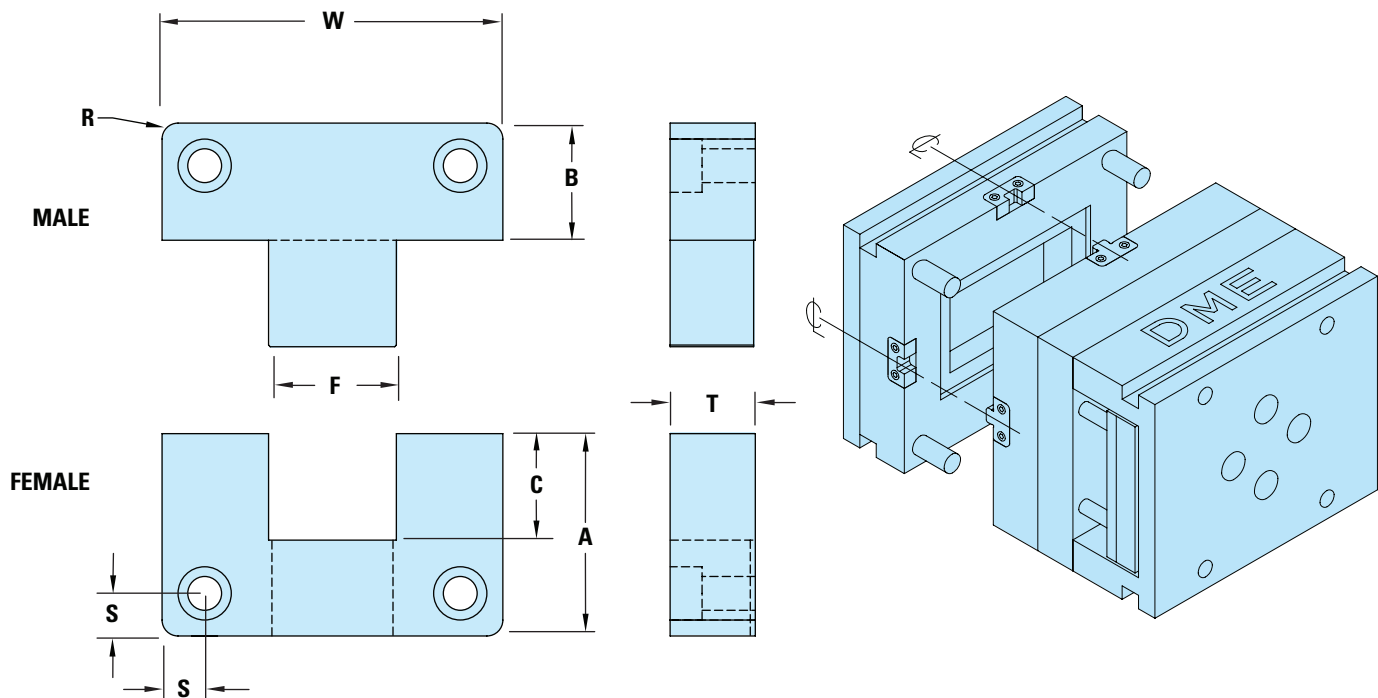
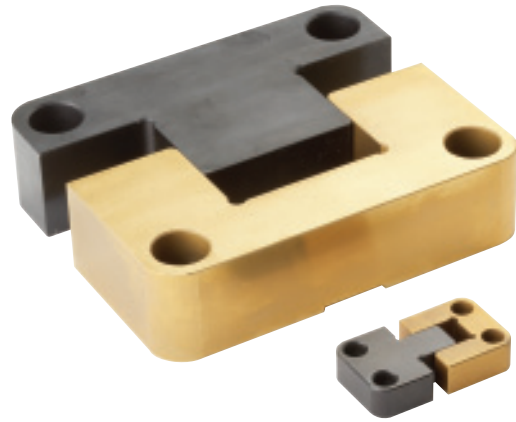
Thanks to precision manufacturing and precision tolerancing, every D-M-E mold interlock component can be replaced independently, eliminating the need to swap out an entire set.

## D-M-E Side Interlocks provide:

- Accurate alignment of mold halves
- Easy installation
- Industry-compatible sizes

## Installation

- Install four (4) Side Interlocks per mold (one per side)
- Install Side Interlocks on the Center Line of each side of the mold



## Black and Gold Side Interlocks – BGS

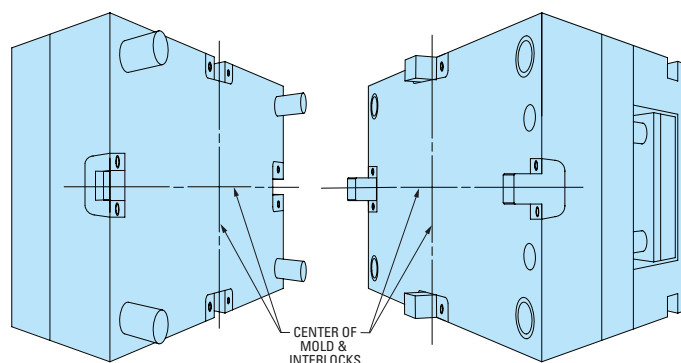
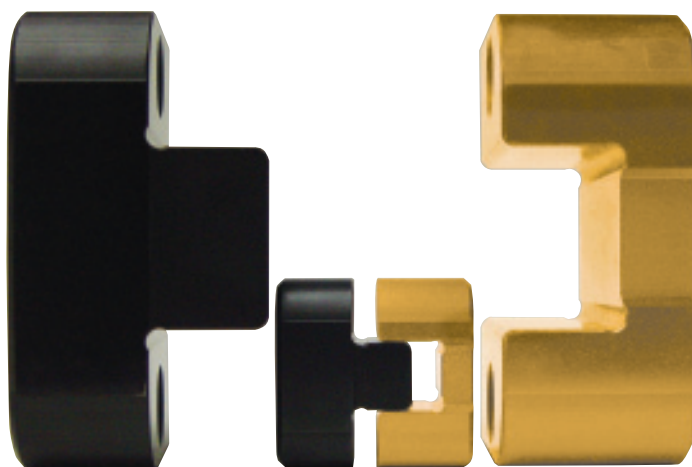
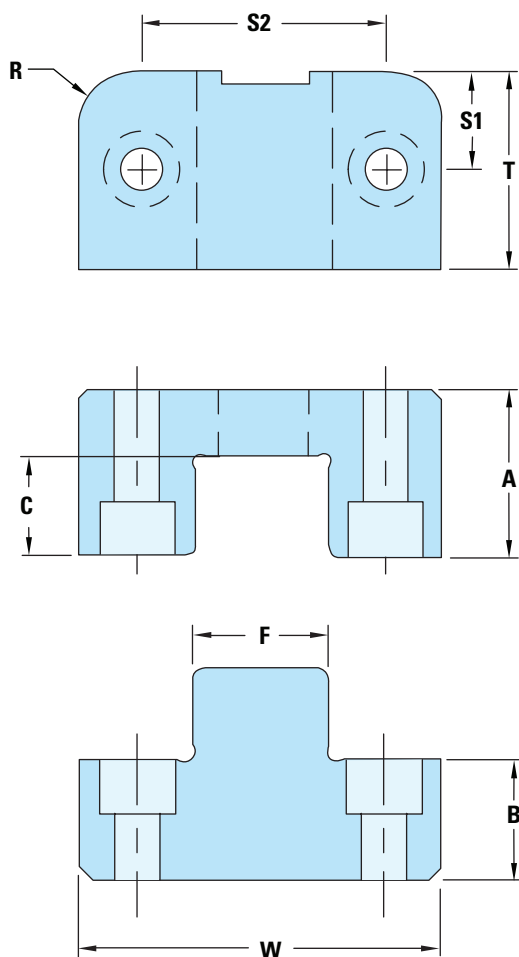
**Female Interlock – Material:** A2 Steel **Heat Treat:** Core Hardened to 58-62 HRC **Surface Treatment:** TiN – Titanium Nitride Coated

**Male Interlock – Material:** AISI H-13 Steel **Heat Treat:** 40-44 HRC **Surface Treatment:** Melonited (SBN)

| ITEM NUMBER | W<br>+.0000<br>-.0004 | A<br>+.000<br>-.002 | B<br>+.000<br>-.002 | C    | F<br>.0001 / .0002<br>CLEARANCE<br>PER SIDE | T<br>+.000<br>-.002 | R<br>POCKET<br>RADIUS | S<br>±.01 | SHCS<br>SIZE     |
|-------------|-----------------------|---------------------|---------------------|------|---|---------------------|-----------------------|-----------|------------------|
| BGS1500     | 1.500                 | .875                | .875                | .56  | .563  | .500                | .187                  | .250      | #8-32 x 5/8"     |
| BGS2000     | 2.000                 | 1.375               | .875                | .66  | .750  | .500                | .187                  | .312      | #10-32 x 5/8"    |
| BGS3000     | 3.000                 | 1.875               | .875                | 1.13 | 1.250                                       | .750                | .250                  | .375      | 1/4"-20 x 3/4"   |
| BGS4000     | 4.000                 | 2.375               | 1.375               | 1.25 | 1.500                                       | 1.000               | .500                  | .500      | 3/8"-16 x 1"     |
| BGS5000     | 5.000                 | 2.875               | 1.375               | 1.63 | 2.000                                       | 1.250               | .500                  | .625      | 1/2"-13 x 1-1/4" |

**NOTE:** To order an individual Male interlock, add the suffix "M" to the item number.  
To order an individual Female interlock, add the suffix "F" to the item number.

# Black and Gold Top Interlocks



## D-M-E Top Interlocks provide:

- Accurate alignment of mold halves
- Easy installation
- Industry-compatible sizes

## Installation

- Install four (4) Top Interlocks per mold (one per side)
- Install Top Interlocks on the Center Line of each side of the mold

## Black and Gold Top Interlocks – BGT

**Female Interlock – Material:** A2 Steel **Heat Treat:** Core Hardened to 58-62 HRC **Surface Treatment:** TiN – Titanium Nitride Coated

**Male Interlock – Material:** AISI H-13 Steel **Heat Treat:** 40-44 HRC **Surface Treatment:** Melonited (SBN)

| ITEM NUMBER | W<br>+.0000<br>-.0004 | A<br>+.000<br>-.002 | B<br>+.000<br>-.002 | C<br>±.01 | F<br>.0001 / .0002<br>CLEARANCE<br>PER SIDE | T<br>+.000<br>-.002 | R<br>POCKET<br>RADIUS | S1<br>±.01 | S2<br>±.01 | SHCS<br>SIZES                           |
|-------------|-----------------------|---------------------|---------------------|-----------|---|---------------------|-----------------------|------------|------------|---|
| BGT1250     | 1.250                 | .625                | .500                | .41       | .438  | .625                | .250                  | .312       | .875       | M: #6-32 x 5/8" F: #6-32 x 3/4"         |
| BGT1500     | 1.500                 | .875                | .750                | .53       | .500  | .875                | .250                  | .437       | 1.000      | M: #8-32 x 7/8" F: #8-32 x 1"           |
| BGT2000     | 2.000                 | 1.125               | .750                | .66       | .750  | 1.000               | .375                  | .500       | 1.375      | M: #10-32 x 1" F: #10-32 x 1-1/4"       |
| BGT3000     | 3.000                 | 1.500               | .750                | .78       | 1.125                                       | 1.125               | .500                  | .562       | 2.250      | M: 1/4-20 x 7/8" F: 1/4-20 x 1-3/4"     |
| BGT3000S    | 3.000                 | 1.250               | .875                | .75       | 1.125                                       | 1.750               | .500                  | .875       | 2.250      | M: 5/16-18 x 1-1/8" F: 5/16-18 x 1-5/8" |

**NOTE:** To order an individual Male interlock, add the suffix "M" to the item number.  
To order an individual Female interlock, add the suffix "F" to the item number.